



[Go to Product page](#)

Datasheet for ABIN2855303  
**anti-AKR1A1 antibody**

1 Image

### Overview

Quantity:	100 µL
Target:	AKR1A1
Reactivity:	Human
Host:	Rabbit
Clonality:	Polyclonal
Conjugate:	This AKR1A1 antibody is un-conjugated
Application:	Western Blotting (WB)

### Product Details

Immunogen:	Recombinant protein encompassing a sequence within the center region of human AKR1A1. The exact sequence is proprietary.
Isotype:	IgG
Cross-Reactivity:	Human
Characteristics:	Rabbit Polyclonal antibody to AKR1A1 (aldo-keto reductase family 1, member A1 (aldehyde reductase)) AKR1A1 antibody [N1C1]
Purification:	Purified by antigen-affinity chromatography.

### Target Details

Target:	AKR1A1
Alternative Name:	aldo-keto reductase family 1 member A1 ( <a href="#">AKR1A1 Products</a> )

## Target Details

---

Background:	This gene encodes a member of the aldo/keto reductase superfamily, which consists of more than 40 known enzymes and proteins. This member, also known as aldehyde reductase, is involved in the reduction of biogenic and xenobiotic aldehydes and is present in virtually every tissue. Alternative splicing of this gene results in two transcript variants encoding the same protein.
Molecular Weight:	37 kDa
Gene ID:	10327
UniProt:	<a href="#">P14550</a>
Pathways:	<a href="#">Monocarboxylic Acid Catabolic Process</a>

## Application Details

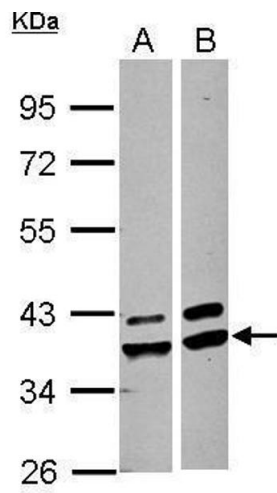
---

Application Notes:	WB: 1:500-1:3000. Optimal dilutions/concentrations should be determined by the researcher. Not tested in other applications.
Comment:	Positive Control: A549 , HepG2
Restrictions:	For Research Use only

## Handling

---

Format:	Liquid
Concentration:	0.98 mg/mL
Buffer:	0.1M Tris-Glycine ( pH 7), 20 % Glycerol, 0.01 % Thimerosal
Preservative:	Thimerosal (Merthiolate)
Precaution of Use:	This product contains Thimerosal (Merthiolate): a POISONOUS AND HAZARDOUS SUBSTANCE which should be handled by trained staff only.
Storage:	4 °C,-20 °C
Storage Comment:	Store as concentrated solution. Centrifuge briefly prior to opening vial. For short-term storage (1-2 weeks), store at 4°C. For long-term storage, aliquot and store at -20°C or below. Avoid multiple freeze-thaw cycles.



### Western Blotting

**Image 1.** WB Image Sample (30 ug of whole cell lysate) A: A549 B: HepG2 10% SDS PAGE antibody diluted at 1:1000