



[Go to Product page](#)

Datasheet for ABIN2855307
anti-Exportin 7 antibody (C-Term)

2 Images

Overview

Quantity:	100 µL
Target:	Exportin 7 (XP07)
Binding Specificity:	C-Term
Reactivity:	Human
Host:	Rabbit
Clonality:	Polyclonal
Conjugate:	This Exportin 7 antibody is un-conjugated
Application:	Western Blotting (WB)

Product Details

Immunogen:	Recombinant protein encompassing a sequence within the C-terminus region of human RanBP16. The exact sequence is proprietary.
Isotype:	IgG
Cross-Reactivity:	Mouse
Characteristics:	Rabbit Polyclonal antibody to RanBP16 (exportin 7) RanBP16 antibody [C2C3], C-term
Purification:	Purified by antigen-affinity chromatography.

Target Details

Target:	Exportin 7 (XP07)
---------	-------------------

Target Details

Alternative Name: exportin 7 ([XP07 Products](#))

Background: The transport of protein and large RNAs through the nuclear pore complexes (NPC) is an energy-dependent and regulated process. The import of proteins with a nuclear localization signal (NLS) is accomplished by recognition of one or more clusters of basic amino acids by the importin-alpha/beta complex, see MIM 600685 and MIM 602738. The small GTPase RAN (MIM 601179) plays a key role in NLS-dependent protein import. RAN-binding protein-16 is a member of the importin-beta superfamily of nuclear transport receptors.[supplied by OMIM]

Cellular Localization: Cytoplasm (Probable) , Nucleus (Probable) , Nucleus , nuclear pore complex (Probable)

Molecular Weight: 124 kDa

Gene ID: 23039

UniProt: [Q9UIA9](#)

Application Details

Application Notes: WB: 1:500-1:3000. Optimal dilutions/concentrations should be determined by the researcher. Not tested in other applications.

Restrictions: For Research Use only

Handling

Format: Liquid

Concentration: 0.93 mg/mL

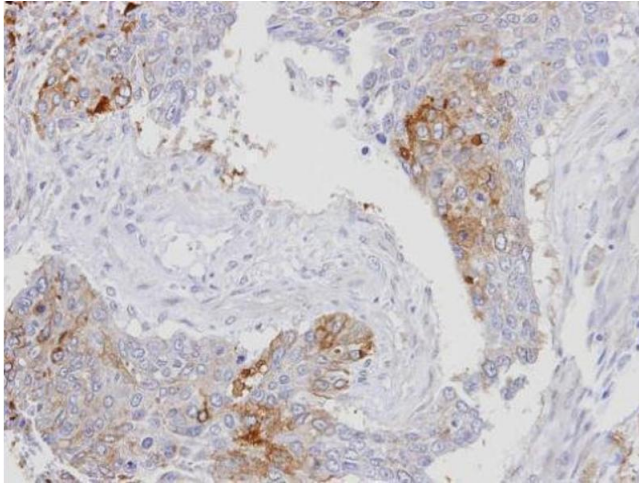
Buffer: 0.1M Tris-Glycine (pH 7), 10 % Glycerol, 0.01 % Thimerosal

Preservative: Thimerosal (Merthiolate)

Precaution of Use: This product contains Thimerosal (Merthiolate): a POISONOUS AND HAZARDOUS SUBSTANCE which should be handled by trained staff only.

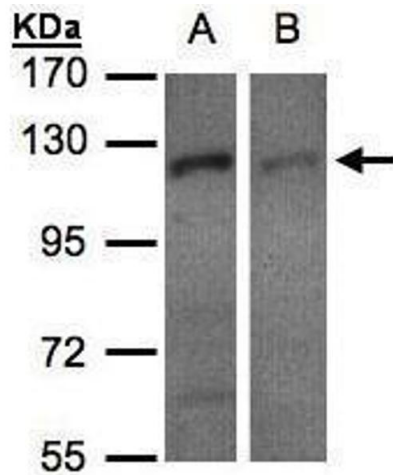
Storage: 4 °C,-20 °C

Storage Comment: Store as concentrated solution. Centrifuge briefly prior to opening vial. For short-term storage (1-2 weeks), store at 4°C. For long-term storage, aliquot and store at -20°C or below. Avoid multiple freeze-thaw cycles.



Immunohistochemistry

Image 1. IHC-P Image Immunohistochemical analysis of paraffin-embedded human lung SCC, using RanBP16, antibody at 1:100 dilution.



Western Blotting

Image 2. WB Image Sample(30 µg of whole cell lysate) A:H1299 B:HeLa S3, 7.5% SDS PAGE antibody diluted at 1:500