

Datasheet for ABIN2855315
anti-Slc25a1 antibody (Center)

1 Image

[Go to Product page](#)

Overview

Quantity:	100 µL
Target:	Slc25a1
Binding Specificity:	Center
Reactivity:	Human
Host:	Rabbit
Clonality:	Polyclonal
Conjugate:	This Slc25a1 antibody is un-conjugated
Application:	Western Blotting (WB)

Product Details

Immunogen:	Recombinant protein encompassing a sequence within the center region of human SLC25A1. The exact sequence is proprietary.
Isotype:	IgG
Cross-Reactivity:	Rhesus Monkey
Cross-Reactivity (Details):	Rhesus Monkey (100 %)
Characteristics:	Rabbit Polyclonal antibody to SLC25A1 (solute carrier family 25 (mitochondrial carrier, citrate transporter), member 1) SLC25A1 antibody [N1C1]
Purification:	Purified by antigen-affinity chromatography.

Target Details

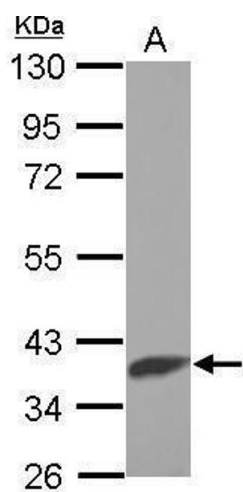
Target:	Slc25a1
Alternative Name:	SLC25A1 (Slc25a1 Products)
Background:	<p>The mitochondrial tricarboxylate transporter (also called citrate transport protein, or CTP) is responsible for the movement of citrate across the mitochondrial inner membrane (Kaplan et al., 1993 [PubMed 8514800]).[supplied by OMIM]</p> <p>Cellular Localization: Mitochondrion inner membrane, Multi-pass membrane protein</p>
Molecular Weight:	34 kDa
Gene ID:	6576

Application Details

Application Notes:	<p>Suggested dilution Reference Western blot 1:500-1:3000* Not tested in other applications.</p> <p>*Optimal dilutions/concentrations should be determined by the researcher.Suggested dilutionReferenceWestern blot1:500-1:3000*</p>
Comment:	Positive Control: HepG2
Restrictions:	For Research Use only

Handling

Format:	Liquid
Concentration:	0.53 mg/mL
Buffer:	1XPBS, 1 % BSA, 20 % Glycerol (pH 7). 0.01 % Thimerosal was added as a preservative.
Preservative:	Thimerosal (Merthiolate)
Precaution of Use:	This product contains Thimerosal (Merthiolate): a POISONOUS AND HAZARDOUS SUBSTANCE which should be handled by trained staff only.
Storage:	-20 °C
Storage Comment:	Keep as concentrated solution. Aliquot and store at -20°C or below. Avoid multiple freeze-thaw cycles.



Western Blotting

Image 1. WB Image Sample (30 ug of whole cell lysate) A:
HepG2 10% SDS PAGE antibody diluted at 1:500