

Datasheet for ABIN2855319  
**anti-14-3-3 theta antibody (Center)**

## 3 Images

[Go to Product page](#)

## Overview

|                      |  |
|----------------------|--|
| Quantity:            | 100 µL   |
| Target:              | 14-3-3 theta (YWHAQ)   |
| Binding Specificity: | Center   |
| Reactivity:          | Human, Mouse   |
| Host:                | Rabbit   |
| Clonality:           | Polyclonal   |
| Conjugate:           | This 14-3-3 theta antibody is un-conjugated  |
| Application:         | Western Blotting (WB), Immunohistochemistry (Paraffin-embedded Sections) (IHC (p)) |

## Product Details

|                             |   |
|-----------------------------|---|
| Immunogen:                  | Recombinant protein encompassing a sequence within the center region of human 14-3-3 theta. The exact sequence is proprietary.                                  |
| Isotype:                    | IgG   |
| Cross-Reactivity:           | Rat (Rattus), Rabbit, Cow (Bovine)  |
| Cross-Reactivity (Details): | Rat (100 %), Rabbit (100 %), Bovine (100 %)   |
| Characteristics:            | Rabbit Polyclonal antibody to 14-3-3 theta (tyrosine 3-monooxygenase/tryptophan 5-monooxygenase activation protein, theta polypeptide)<br>14-3-3 theta antibody |
| Purification:               | Purified by antigen-affinity chromatography.  |

## Target Details

|                   |  |
|-------------------|--|
| Target:           | 14-3-3 theta (YWHAQ)   |
| Alternative Name: | 14-3-3 theta ( <a href="#">YWHAQ Products</a> )  |
| Background:       | <p>This gene product belongs to the 14-3-3 family of proteins which mediate signal transduction by binding to phosphoserine-containing proteins. This highly conserved protein family is found in both plants and mammals, and this protein is 99 % identical to the mouse and rat orthologs. This gene is upregulated in patients with amyotrophic lateral sclerosis. It contains in its 5' UTR a 6 bp tandem repeat sequence which is polymorphic, however, there is no correlation between the repeat number and the disease.</p> <p>Cellular Localization: Cytoplasm</p> |
| Molecular Weight: | 28 kDa   |
| Gene ID:          | 10971  |
| Pathways:         | <a href="#">Apoptosis</a> , <a href="#">Myometrial Relaxation and Contraction</a>  |

## Application Details

|                    |   |
|--------------------|---|
| Application Notes: | <p>Suggested dilution Reference IHC (Formalin-fixed paraffin-embedded sections) 1:100-1:1000* Western blot 1:1000-1:30000* Not tested in other applications. *Optimal dilutions/concentrations should be determined by the researcher.Suggested dilutionReferenceIHC (Formalin-fixed paraffin-embedded sections)1:100-1:1000* Western blot1:1000-1:30000*</p> |
| Comment:           | Positive Control: 293T , A431 , H1299 , HeLaS3 , HepG2 , Molt-4 , Raji , mouse brain  |
| Restrictions:      | For Research Use only   |

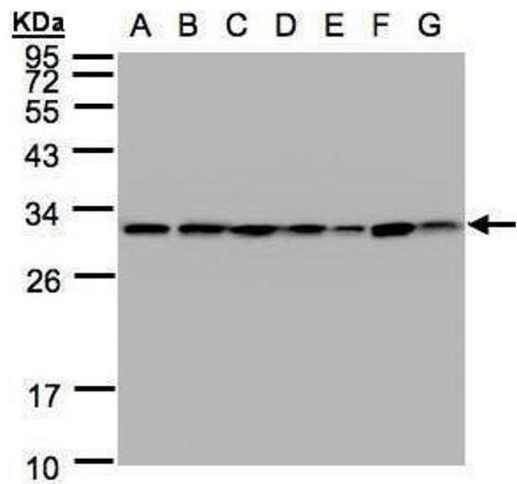
## Handling

|                    |  |
|--------------------|--|
| Format:            | Liquid   |
| Concentration:     | 0.84 mg/mL   |
| Buffer:            | 0.1M Tris, 0.1M Glycine, 10 % Glycerol ( pH 7). 0.01 % Thimerosal was added as a preservative.                                     |
| Preservative:      | Thimerosal (Merthiolate)   |
| Precaution of Use: | This product contains Thimerosal (Merthiolate): a POISONOUS AND HAZARDOUS SUBSTANCE which should be handled by trained staff only. |
| Storage:           | -20 °C   |

Handling

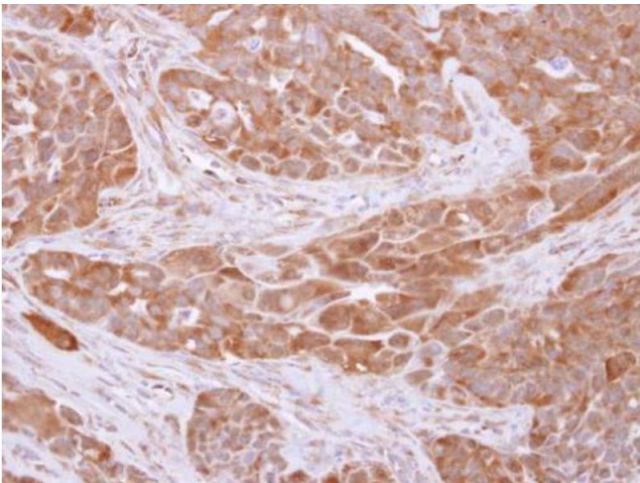
Storage Comment: Keep as concentrated solution. Aliquot and store at -20°C or below. Avoid multiple freeze-thaw cycles.

Images



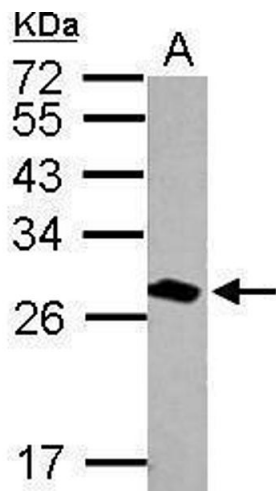
**Western Blotting**

**Image 1.** WB Image Sample(30 ug whole cell lysate) A: 293T B: A431 , C: H1299 D: HeLa S3 , E: Hep G2 , F: MOLT4 , G: Raji , 12% SDS PAGE antibody diluted at 1:1000



**Immunohistochemistry**

**Image 2.** IHC-P Image 14-3-3 theta antibody detects YWHAQ protein at cytosol on H358 xenograft by immunohistochemical analysis. Sample: Paraffin-embedded H358 xenograft. 14-3-3 theta antibody , dilution: 1:500.



**Western Blotting**

**Image 3.** WB Image Sample (20 ug of whole cell lysate) A: mouse brain 12% SDS PAGE antibody diluted at 1:30000