

Datasheet for ABIN2855326  
**anti-WDR1 antibody (C-Term)**

## 4 Images

[Go to Product page](#)

## Overview

Quantity:	100 µL
Target:	WDR1
Binding Specificity:	C-Term
Reactivity:	Human
Host:	Rabbit
Clonality:	Polyclonal
Conjugate:	This WDR1 antibody is un-conjugated
Application:	Western Blotting (WB), Immunohistochemistry (Paraffin-embedded Sections) (IHC (p))

## Product Details

Immunogen:	Recombinant protein encompassing a sequence within the C-terminus region of human WDR1. The exact sequence is proprietary.
Isotype:	IgG
Cross-Reactivity:	Human, Mouse
Characteristics:	Rabbit Polyclonal antibody to WDR1 (WD repeat domain 1) WDR1 antibody
Purification:	Purified by antigen-affinity chromatography.

## Target Details

Target:	WDR1
---------	------

## Target Details

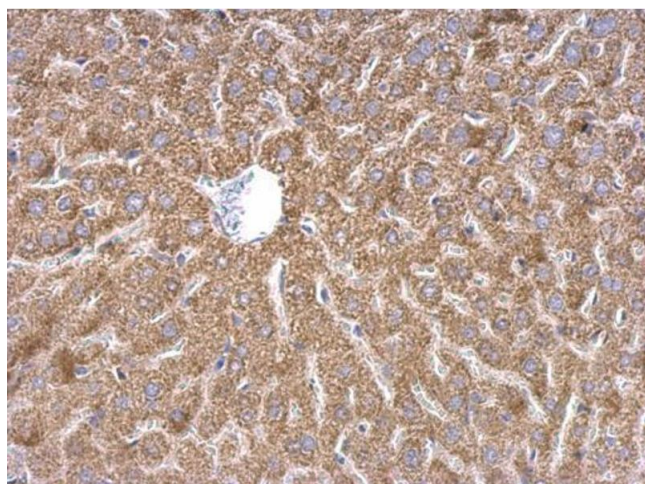
Alternative Name:	WD repeat domain 1 ( <a href="#">WDR1 Products</a> )
Background:	<p>This gene encodes a protein containing 9 WD repeats. WD repeats are approximately 30- to 40- amino acid domains containing several conserved residues, mostly including a trp-asp at the C-terminal end. WD domains are involved in protein-protein interactions. The encoded protein may help induce the disassembly of actin filaments. Two transcript variants encoding different isoforms have been found for this gene.</p> <p>Cellular Localization: Cytoplasm , cytoskeleton</p>
Molecular Weight:	66 kDa
Gene ID:	9948
UniProt:	<a href="#">O75083</a>
Pathways:	<a href="#">Sensory Perception of Sound</a>

## Application Details

Application Notes:	WB: 1:500-1:5000. IHC-P: 1:100-1:1000. Optimal dilutions/concentrations should be determined by the researcher. Not tested in other applications.
Comment:	Positive Control: Mouse brain , Raji
Restrictions:	For Research Use only

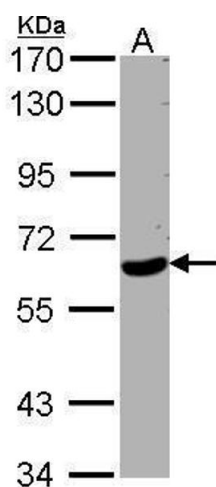
## Handling

Format:	Liquid
Concentration:	1 mg/mL
Buffer:	0.1M Tris-Glycine ( pH 7), 10 % Glycerol, 0.01 % Thimerosal
Preservative:	Thimerosal (Merthiolate)
Precaution of Use:	This product contains Thimerosal (Merthiolate): a POISONOUS AND HAZARDOUS SUBSTANCE which should be handled by trained staff only.
Storage:	4 °C, -20 °C
Storage Comment:	Store as concentrated solution. Centrifuge briefly prior to opening vial. For short-term storage (1-2 weeks), store at 4°C. For long-term storage, aliquot and store at -20°C or below. Avoid multiple freeze-thaw cycles.



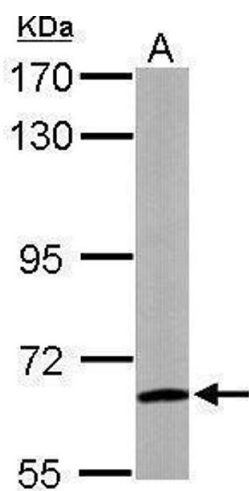
#### Immunohistochemistry

**Image 1.** IHC-P Image WDR1 antibody detects WDR1 protein at cytosol on mouse liver by immunohistochemical analysis. Sample: Paraffin-embedded mouse liver. WDR1 antibody, dilution: 1:500.



#### Western Blotting

**Image 2.** WB Image Sample (30 µg of whole cell lysate) A: Raji, 7.5% SDS PAGE antibody diluted at 1:500



#### Western Blotting

**Image 3.** WB Image Sample (50 µg of whole cell lysate) A: Mouse brain 7.5% SDS PAGE antibody diluted at 1:5000

Please check the [product details page](#) for more images. Overall 4 images are available for ABIN2855326.