



[Go to Product page](#)

Datasheet for ABIN2855329

## anti-ARHGEF18 antibody (Center)

[2 Images](#)

[3 Publications](#)

### Overview

Quantity:	100 µL
Target:	ARHGEF18
Binding Specificity:	Center
Reactivity:	Human
Host:	Rabbit
Clonality:	Polyclonal
Conjugate:	This ARHGEF18 antibody is un-conjugated
Application:	Western Blotting (WB), Immunofluorescence (IF), Immunocytochemistry (ICC)

### Product Details

Immunogen:	Recombinant protein encompassing a sequence within the center region of human ARHGEF18. The exact sequence is proprietary.
Isotype:	IgG
Characteristics:	Rabbit Polyclonal antibody to ARHGEF18 (Rho/Rac guanine nucleotide exchange factor (GEF) 18) ARHGEF18 antibody
Purification:	Purified by antigen-affinity chromatography.

### Target Details

Target:	ARHGEF18
Alternative Name:	ARHGEF18 ( <a href="#">ARHGEF18 Products</a> )

## Target Details

---

**Background:** Rho GTPases are GTP binding proteins that regulate a wide spectrum of cellular functions. These cellular processes include cytoskeletal rearrangements, gene transcription, cell growth and motility. Activation of Rho GTPases is under the direct control of guanine nucleotide exchange factors (GEFs). The protein encoded by this gene is a guanine nucleotide exchange factor and belongs to the Rho GTPase GFE family. Family members share a common feature, a Dbl (DH) homology domain followed by a pleckstrin (PH) homology domain. Alternatively spliced transcript variants encoding different isoforms have been identified.

Cellular Localization: Cytoplasm

---

**Molecular Weight:** 131 kDa

---

**Gene ID:** 23370

---

**Pathways:** [Neurotrophin Signaling Pathway](#)

---

## Application Details

---

**Application Notes:** Suggested dilution Reference ICC/IF 1:100-1:1000\* Western blot 1:500-1:3000\* Not tested in other applications. \*Optimal dilutions/concentrations should be determined by the researcher.Suggested dilutionReferenceICC/IF1:100-1:1000\* Western blot1:500-1:3000\*

---

**Comment:** Positive Control: HepG2

---

**Restrictions:** For Research Use only

---

## Handling

---

**Format:** Liquid

---

**Concentration:** 0.43 mg/mL

---

**Buffer:** 0.1M Tris, 0.1M Glycine, 10 % Glycerol ( pH 7). 0.01 % Thimerosal was added as a preservative.

---

**Preservative:** Thimerosal (Merthiolate)

---

**Precaution of Use:** This product contains Thimerosal (Merthiolate): a POISONOUS AND HAZARDOUS SUBSTANCE which should be handled by trained staff only.

---

**Storage:** -20 °C

---

**Storage Comment:** Keep as concentrated solution. Aliquot and store at -20°C or below. Avoid multiple freeze-thaw cycles.

---

## Publications

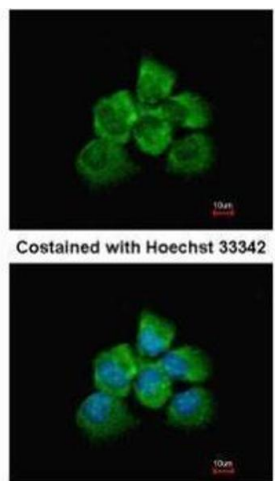
Product cited in:

Haas, Zihni, Ruppel, Hartmann, Ebnet, Tada, Balda, Matter: "Interplay between Extracellular Matrix Stiffness and JAM-A Regulates Mechanical Load on ZO-1 and Tight Junction Assembly." in: **Cell reports**, Vol. 32, Issue 3, pp. 107924, (2020) ([PubMed](#)).

Lu, Wawro, Morgens, Portela, Bassik, Pfeffer: "Genome-wide interrogation of extracellular vesicle biology using barcoded miRNAs." in: **eLife**, Vol. 7, (2018) ([PubMed](#)).

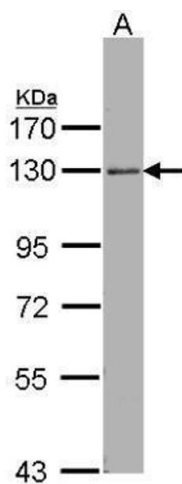
Zihni, Vlassaks, Terry, Carlton, Leung, Olson, Pichaud, Balda, Matter: "An apical MRCK-driven morphogenetic pathway controls epithelial polarity." in: **Nature cell biology**, Vol. 19, Issue 9, pp. 1049-1060, (2017) ([PubMed](#)).

## Images



### Immunofluorescence

**Image 1.** ICC/IF Image Immunofluorescence analysis of methanol-fixed A431, using ARHGEF18, antibody at 1:200 dilution.



### Western Blotting

**Image 2.** WB Image Sample (30 ug of whole cell lysate) A: Hep G2 , 7.5% SDS PAGE antibody diluted at 1:1000