

Datasheet for ABIN2855331

anti-KAP1 antibody

8 Images

4 Publications

[Go to Product page](#)

Overview

| | |
|--------------|--|
| Quantity: | 100 µL |
| Target: | KAP1 (TRIM28) |
| Reactivity: | Human |
| Host: | Rabbit |
| Clonality: | Polyclonal |
| Conjugate: | This KAP1 antibody is un-conjugated |
| Application: | Western Blotting (WB), Immunofluorescence (IF), Immunoprecipitation (IP), Immunohistochemistry (Paraffin-embedded Sections) (IHC (p)), Immunocytochemistry (ICC), Chromatin Immunoprecipitation (ChIP) |

Product Details

| | |
|-------------------|--|
| Immunogen: | Recombinant protein encompassing a sequence within the center region of human KAP1. The exact sequence is proprietary. |
| Isotype: | IgG |
| Cross-Reactivity: | Human, Mouse |
| Characteristics: | Rabbit Polyclonal antibody to KAP1 (tripartite motif containing 28) KAP1 antibody [N3C2], Internal |
| Purification: | Purified by antigen-affinity chromatography. |

Target Details

| | |
|---------|---------------|
| Target: | KAP1 (TRIM28) |
|---------|---------------|

Target Details

| | |
|-------------------|--|
| Alternative Name: | tripartite motif containing 28 (TRIM28 Products) |
| Background: | <p>The protein encoded by this gene mediates transcriptional control by interaction with the Kruppel-associated box repression domain found in many transcription factors. The protein localizes to the nucleus and is thought to associate with specific chromatin regions. The protein is a member of the tripartite motif family. This tripartite motif includes three zinc-binding domains, a RING, a B-box type 1 and a B-box type 2, and a coiled-coil region.</p> <p>Cellular Localization: Nucleus (By similarity)</p> |
| Molecular Weight: | 89 kDa |
| Gene ID: | 10155 |
| UniProt: | Q13263 |
| Pathways: | Hedgehog Signaling , Positive Regulation of Response to DNA Damage Stimulus |

Application Details

| | |
|--------------------|---|
| Application Notes: | WB: 1:1000-1:10000. ICC/IF: 1:100-1:1000. IHC-P: 1:100-1:1000. IP: 1:500-1:1000. Optimal dilutions/concentrations should be determined by the researcher. Not tested in other applications. |
| Comment: | <p>Positive Control: NIH-3T3</p> <p>Validation: Orthogonal</p> |
| Restrictions: | For Research Use only |

Handling

| | |
|--------------------|---|
| Format: | Liquid |
| Concentration: | 0.48 mg/mL |
| Buffer: | 1XPBS pH 7, 1 % BSA, 20 % Glycerol, 0.025 % ProClin 300 |
| Preservative: | ProClin |
| Precaution of Use: | This product contains ProClin: a POISONOUS AND HAZARDOUS SUBSTANCE which should be handled by trained staff only. |
| Storage: | 4 °C,-20 °C |
| Storage Comment: | Store as concentrated solution. Centrifuge briefly prior to opening vial. For short-term storage |

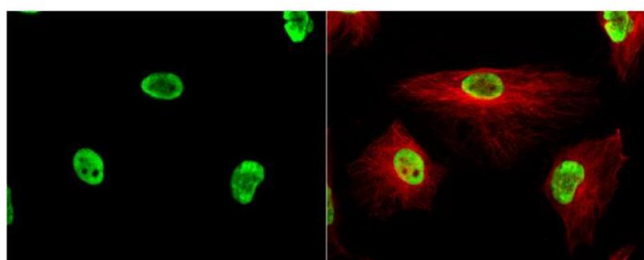
(1-2 weeks), store at 4°C. For long-term storage, aliquot and store at -20°C or below. Avoid multiple freeze-thaw cycles.

Publications

Product cited in: Glaeser, Urban, Fenech, Voloshanenko, Kranz, Lari, Christianson, Boutros: "ERAD-dependent control of the Wnt secretory factor Evi." in: **The EMBO journal**, Vol. 37, Issue 4, (2018) ([PubMed](#)).

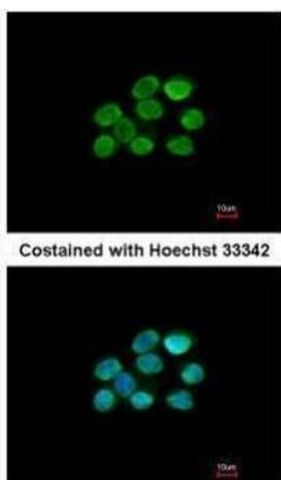
Jain, Noordam, Hoshi, Vallania, Conrad: "Validating single-cell genomics for the study of renal development." in: **Kidney international**, Vol. 86, Issue 5, pp. 1049-55, (2015) ([PubMed](#)).

Images



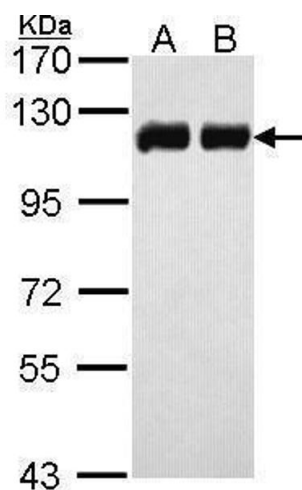
Immunofluorescence

Image 1. ICC/IF Image KAP1 antibody [N3C2], Internal detects KAP1 protein at nucleus by immunofluorescent analysis. Sample: HeLa cells were fixed in 4% paraformaldehyde at RT for 15 min. Green: KAP1 protein stained by KAP1 antibody [N3C2], Internal, diluted at 1:200. Red: alpha Tubulin, a cytoskeleton marker, stained by alpha Tubulin antibody [B-5-1-2], diluted at 1:10000.



Immunofluorescence

Image 2. ICC/IF Image Immunofluorescence analysis of paraformaldehyde-fixed A431, using KAP1, antibody at 1:200 dilution.



Western Blotting

Image 3. WB Image Sample (30 ug of whole cell lysate) A: H1299 B: Hela 7.5% SDS PAGE antibody diluted at 1:10000

Please check the [product details page](#) for more images. Overall 8 images are available for ABIN2855331.