

Datasheet for ABIN2855333

anti-RPL13A antibody**3** Images[Go to Product page](#)

Overview

Quantity:	100 µL
Target:	RPL13A
Reactivity:	Human
Host:	Rabbit
Clonality:	Polyclonal
Conjugate:	This RPL13A antibody is un-conjugated
Application:	Western Blotting (WB), Immunofluorescence (IF), Immunohistochemistry (Paraffin-embedded Sections) (IHC (p)), Immunocytochemistry (ICC)

Product Details

Immunogen:	Recombinant protein encompassing a sequence within the center region of human RPL13A. The exact sequence is proprietary.
Isotype:	IgG
Cross-Reactivity:	Human, Zebrafish (Danio rerio)
Characteristics:	Rabbit Polyclonal antibody to RPL13A (ribosomal protein L13a) RPL13A antibody [N1C3]
Purification:	Purified by antigen-affinity chromatography.

Target Details

Target:	RPL13A
Alternative Name:	ribosomal protein L13a (RPL13A Products)

Target Details

Background: Ribosomes, the organelles that catalyze protein synthesis, consist of a small 40S subunit and a large 60S subunit. Together these subunits are composed of 4 RNA species and approximately 80 structurally distinct proteins. This gene encodes a ribosomal protein that is a component of the 60S subunit. The protein belongs to the L13P family of ribosomal proteins. It is located in the cytoplasm. Transcript variants utilizing alternative polyA signals have been observed. This gene is co-transcribed with the small nucleolar RNA genes U32, U33, U34, and U35, which are located in its second, fourth, fifth, and sixth introns, respectively. As is typical for genes encoding ribosomal proteins, there are multiple processed pseudogenes of this gene dispersed through the genome.

Molecular Weight: 24 kDa

Gene ID: 23521

UniProt: [P40429](#)

Application Details

Application Notes: WB: 1:500-1:3000. ICC/IF: 1:100-1:1000. IHC-P: 1:100-1:1000. Optimal dilutions/concentrations should be determined by the researcher. Not tested in other applications.

Comment: Positive Control: 293T , HeLa

Restrictions: For Research Use only

Handling

Format: Liquid

Concentration: 0.86 mg/mL

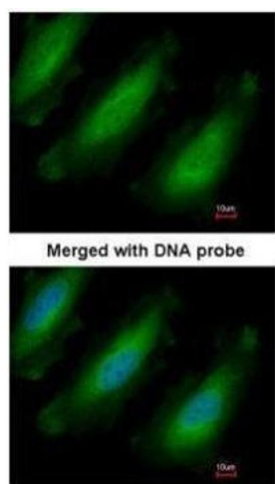
Buffer: 1XPBS (pH 7), 1 % BSA, 20 % Glycerol, 0.01 % Thimerosal

Preservative: Thimerosal (Merthiolate)

Precaution of Use: This product contains Thimerosal (Merthiolate): a POISONOUS AND HAZARDOUS SUBSTANCE which should be handled by trained staff only.

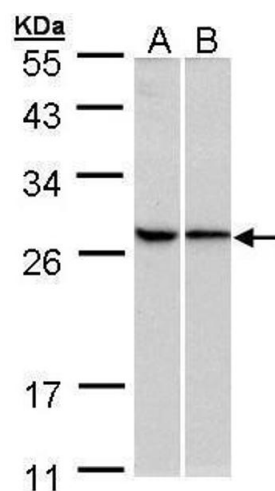
Storage: 4 °C, -20 °C

Storage Comment: Store as concentrated solution. Centrifuge briefly prior to opening vial. For short-term storage (1-2 weeks), store at 4°C. For long-term storage, aliquot and store at -20°C or below. Avoid multiple freeze-thaw cycles.



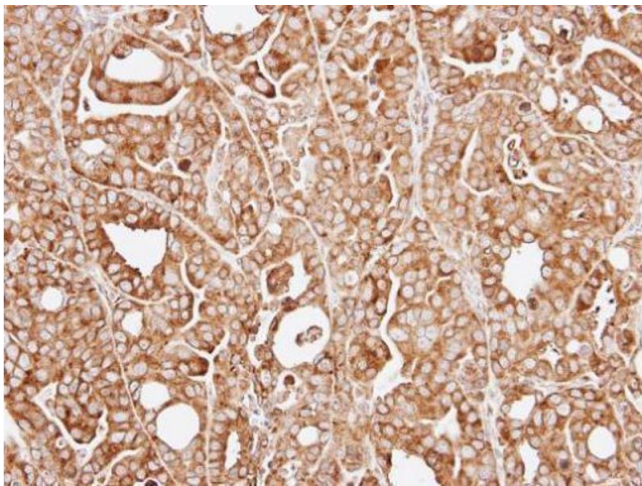
Immunofluorescence

Image 1. ICC/IF Image Immunofluorescence analysis of paraformaldehyde-fixed HeLa, using RPL13A, antibody at 1:200 dilution.



Western Blotting

Image 2. WB Image Sample (30 ug of whole cell lysate) A:293T B:HeLa 10% SDS PAGE antibody diluted at 1:500



Immunohistochemistry

Image 3. IHC-P Image Immunohistochemical analysis of paraffin-embedded NCI-N87 xenograft, using RPL13A, antibody at 1:100 dilution.