



[Go to Product page](#)

Datasheet for ABIN2855335
anti-DPF2 antibody (Center)

3 Images

Overview

Quantity:	100 µL
Target:	DPF2
Binding Specificity:	Center
Reactivity:	Human, Mouse
Host:	Rabbit
Clonality:	Polyclonal
Conjugate:	This DPF2 antibody is un-conjugated
Application:	Western Blotting (WB), Immunohistochemistry (Paraffin-embedded Sections) (IHC (p))

Product Details

Immunogen:	Recombinant protein encompassing a sequence within the center region of human DPF2. The exact sequence is proprietary.
Isotype:	IgG
Cross-Reactivity:	Chimpanzee, Cow (Bovine)
Cross-Reactivity (Details):	Chimpanzee (100 %), Bovine (100 %)
Characteristics:	Rabbit Polyclonal antibody to DPF2 (D4, zinc and double PHD fingers family 2) DPF2 antibody
Purification:	Purified by antigen-affinity chromatography.

Target Details

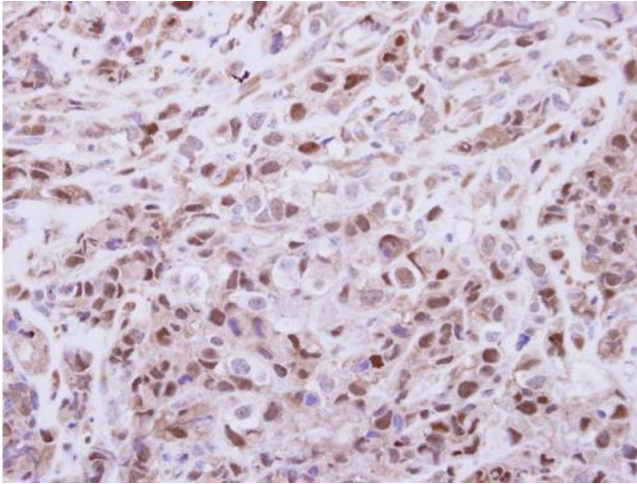
Target:	DPF2
Alternative Name:	DPF2 (DPF2 Products)
Background:	<p>The protein encoded by this gene is a member of the d4 domain family, characterized by a zinc finger-like structural motif. This protein functions as a transcription factor which is necessary for the apoptotic response following deprivation of survival factors. It likely serves a regulatory role in rapid hematopoietic cell growth and turnover. This gene is considered a candidate gene for multiple endocrine neoplasia type I, an inherited cancer syndrome involving multiple parathyroid, enteropancreatic, and pituitary tumors.</p> <p>Cellular Localization: Nucleus , Cytoplasm</p>
Molecular Weight:	44 kDa
Gene ID:	5977

Application Details

Application Notes:	<p>Suggested dilution Reference IHC (Formalin-fixed paraffin-embedded sections) 1:100-1:1000* Western blot 1:500-1:3000* Not tested in other applications. *Optimal dilutions/concentrations should be determined by the researcher.Suggested dilutionReferenceIHC (Formalin-fixed paraffin-embedded sections)1:100-1:1000* Western blot1:500-1:3000*</p>
Comment:	Positive Control: DPF2 transfected 293T cell
Restrictions:	For Research Use only

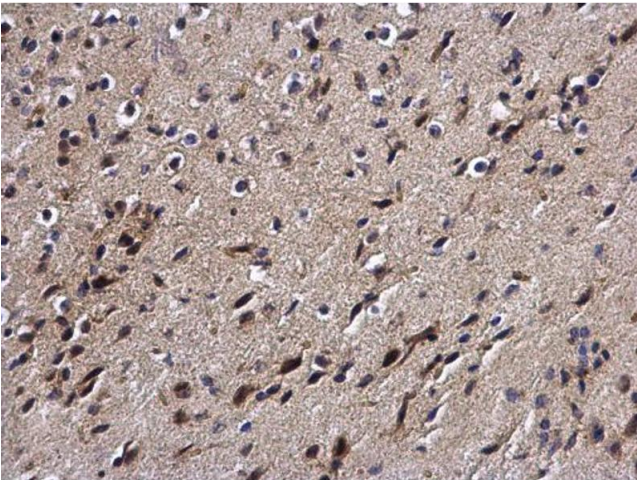
Handling

Format:	Liquid
Concentration:	0.67 mg/mL
Buffer:	0.1M Tris, 0.1M Glycine, 10 % Glycerol (pH 7). 0.01 % Thimerosal was added as a preservative.
Preservative:	Thimerosal (Merthiolate)
Precaution of Use:	This product contains Thimerosal (Merthiolate): a POISONOUS AND HAZARDOUS SUBSTANCE which should be handled by trained staff only.
Storage:	-20 °C
Storage Comment:	Keep as concentrated solution. Aliquot and store at -20°C or below. Avoid multiple freeze-thaw cycles.



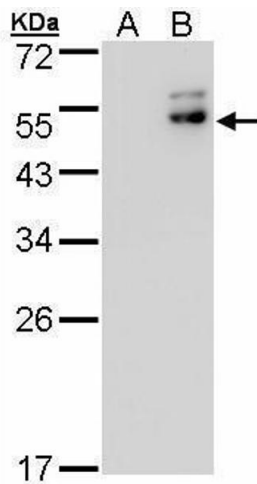
Immunohistochemistry

Image 1. IHC-P Image Immunohistochemical analysis of paraffin-embedded H661 xenograft, using DPF2, antibody at 1:250 dilution.



Immunohistochemistry

Image 2. IHC-P Image DPF2 antibody detects DPF2 protein at cytoplasm and nucleus on mouse brain by immunohistochemical analysis. Sample: Paraffin-embedded mouse brain. DPF2 antibody, diluted at 1:500.



Western Blotting

Image 3. WB Image Western Blot analysis of DPF2 expression in transfected 293T cell line by DPF2 polyclonal antibody. A: Non-transfected lysate. B: DPF2 transfected lysate. 12% SDS PAGE antibody diluted at 1:500