

Datasheet for ABIN2855337

anti-TSFM antibody

3 Images

[Go to Product page](#)

Overview

Quantity:	100 µL
Target:	TSFM
Reactivity:	Human
Host:	Rabbit
Clonality:	Polyclonal
Conjugate:	This TSFM antibody is un-conjugated
Application:	Western Blotting (WB), Immunofluorescence (IF), Immunohistochemistry (Paraffin-embedded Sections) (IHC (p)), Immunocytochemistry (ICC)

Product Details

Immunogen:	Recombinant protein encompassing a sequence within the center region of human TSFM. The exact sequence is proprietary.
Isotype:	IgG
Cross-Reactivity:	Human
Characteristics:	Rabbit Polyclonal antibody to TSFM (Ts translation elongation factor, mitochondrial) TSFM antibody
Purification:	Purified by antigen-affinity chromatography.

Target Details

Target:	TSFM
Alternative Name:	Ts translation elongation factor, mitochondrial (TSFM Products)

Target Details

Background: Synthesis of the 13 mitochondrial-encoded proteins occurs on a dedicated mitochondrial translation apparatus similar to that found in prokaryotes and requires, in addition to the tRNAs and rRNAs encoded in mtDNA, the concerted action of several translation factors and a large number of mitochondrial ribosomal proteins, all of which are encoded by nuclear genes. The TSFM gene encodes a mitochondrial translation elongation factor (Smeitink et al., 2006 [PubMed 17033963]).[supplied by OMIM]

Cellular Localization: Mitochondrion

Molecular Weight: 35 kDa

Gene ID: 10102

UniProt: [P43897](#)

Application Details

Application Notes: WB: 1:500-1:3000. ICC/IF: 1:100-1:1000. IHC-P: 1:100-1:1000. Optimal dilutions/concentrations should be determined by the researcher. Not tested in other applications.

Comment: Positive Control: Jurkat , K562

Restrictions: For Research Use only

Handling

Format: Liquid

Concentration: 1 mg/mL

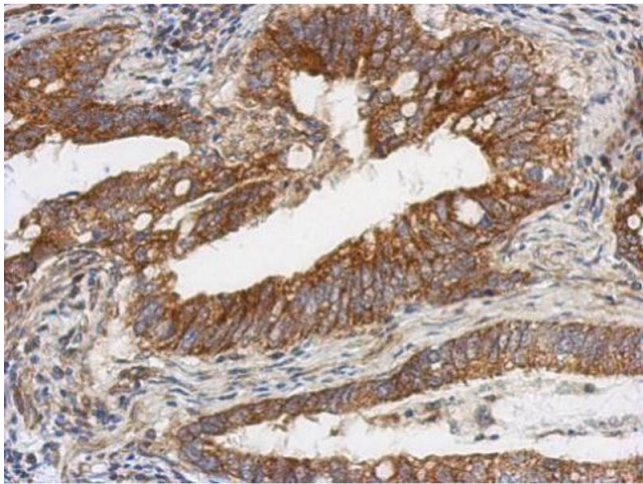
Buffer: 1XPBS (pH 7), 1 % BSA, 20 % Glycerol, 0.01 % Thimerosal

Preservative: Thimerosal (Merthiolate)

Precaution of Use: This product contains Thimerosal (Merthiolate): a POISONOUS AND HAZARDOUS SUBSTANCE which should be handled by trained staff only.

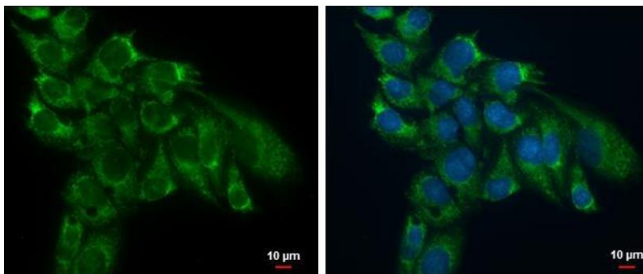
Storage: 4 °C,-20 °C

Storage Comment: Store as concentrated solution. Centrifuge briefly prior to opening vial. For short-term storage (1-2 weeks), store at 4°C. For long-term storage, aliquot and store at -20°C or below. Avoid multiple freeze-thaw cycles.



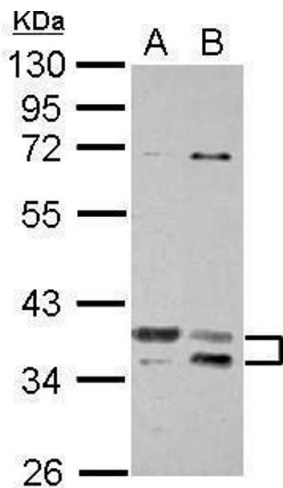
Immunohistochemistry

Image 1. IHC-P Image Immunohistochemical analysis of paraffin-embedded human gastric cancer, using TSFM, antibody at 1:500 dilution.



Immunofluorescence

Image 2. ICC/IF Image TSFM antibody detects TSFM protein at mitochondria by immunofluorescent analysis. Sample: Hep G2 cells were fixed in 2% paraformaldehyde/culture medium at 37°C for 30 min. Green: TSFM protein stained by TSFM antibody, diluted at 1:500. Blue: Hoechst 33342 staining. Scale bar = 10 µm.



Western Blotting

Image 3. WB Image Sample (30 µg of whole cell lysate) A: Jurkat B: K562 10% SDS PAGE antibody diluted at 1:1000