

Datasheet for ABIN2855343  
**anti-TUBGCP2 antibody (N-Term)**[Go to Product page](#)

## 4 Images

## Overview

Quantity:	100 µL
Target:	TUBGCP2
Binding Specificity:	N-Term
Reactivity:	Human
Host:	Rabbit
Clonality:	Polyclonal
Conjugate:	This TUBGCP2 antibody is un-conjugated
Application:	Western Blotting (WB), Immunocytochemistry (ICC), Immunohistochemistry (Paraffin-embedded Sections) (IHC (p)), Immunofluorescence (IF)

## Product Details

Immunogen:	Recombinant protein encompassing a sequence within the N-terminus region of human GCP2. The exact sequence is proprietary.
Isotype:	IgG
Cross-Reactivity:	Human, Mouse
Characteristics:	Rabbit Polyclonal antibody to GCP2 (tubulin, gamma complex associated protein 2) GCP2 antibody [N1N2], N-term
Purification:	Purified by antigen-affinity chromatography.

## Target Details

Target:	TUBGCP2
---------	---------

## Target Details

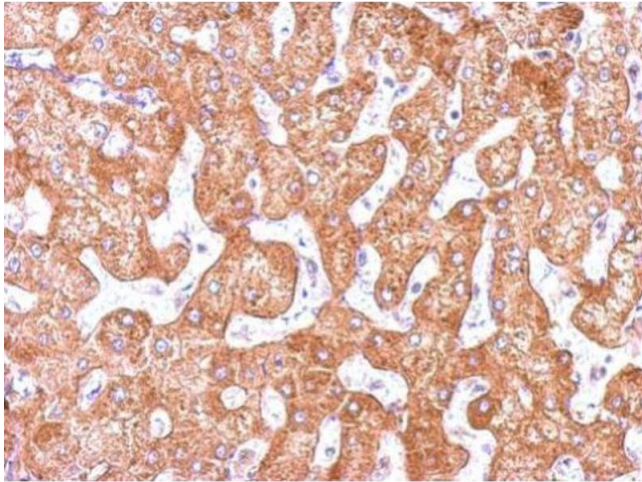
Alternative Name:	tubulin gamma complex associated protein 2 ( <a href="#">TUBGCP2 Products</a> )
Background:	Gamma-tubulin complex is necessary for microtubule nucleation at the centrosome.  Cellular Localization: Centrosome
Molecular Weight:	103 kDa
Gene ID:	10844
UniProt:	<a href="#">Q9BSJ2</a>
Pathways:	<a href="#">M Phase</a> , <a href="#">SARS-CoV-2 Protein Interactome</a>

## Application Details

Application Notes:	WB: 1:500-1:3000. ICC/IF: 1:100-1:1000. IHC-P: 1:100-1:1000. Optimal dilutions/concentrations should be determined by the researcher. Not tested in other applications.
Comment:	Positive Control: NIH-3T3 , A431 , HeLa
Restrictions:	For Research Use only

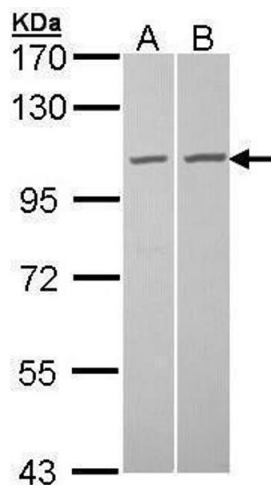
## Handling

Format:	Liquid
Concentration:	1 mg/mL
Buffer:	0.1M Tris-Glycine ( pH 7), 10 % Glycerol, 0.01 % Thimerosal
Preservative:	Thimerosal (Merthiolate)
Precaution of Use:	This product contains Thimerosal (Merthiolate): a POISONOUS AND HAZARDOUS SUBSTANCE which should be handled by trained staff only.
Storage:	4 °C,-20 °C
Storage Comment:	Store as concentrated solution. Centrifuge briefly prior to opening vial. For short-term storage (1-2 weeks), store at 4°C. For long-term storage, aliquot and store at -20°C or below. Avoid multiple freeze-thaw cycles.



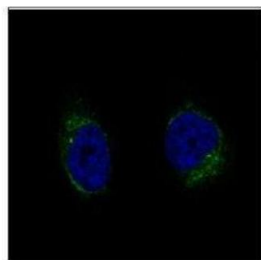
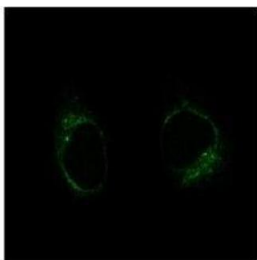
#### Immunohistochemistry

**Image 1.** IHC-P Image Immunohistochemical analysis of paraffin-embedded human hepatoma, using GCP2, antibody at 1:500 dilution.



#### Western Blotting

**Image 2.** WB Image Sample (30 ug of whole cell lysate) A: A431, B: HeLa 7.5% SDS PAGE antibody diluted at 1:1000



#### Immunofluorescence

**Image 3.** ICC/IF Image GCP2 antibody [N1N2], N-term detects TUBGCP2 protein at centrosome by confocal immunofluorescent analysis. Sample: HeLa cells were fixed in 4% paraformaldehyde at RT for 15 min. Green: TUBGCP2 protein stained by GCP2 antibody [N1N2], N-term, diluted at 1:500. Blue: Hoechst 33342 staining. [Images captured by Olympus FV10i Confocal Laser Scanning Microscope]

Please check the [product details page](#) for more images. Overall 4 images are available for ABIN2855343.