



Datasheet for ABIN2855345  
**anti-eEF1A1 antibody**



[Go to Product page](#)

1 Image

### Overview

Quantity:	100 µL
Target:	eEF1A1 (EEF1A1)
Reactivity:	Human
Host:	Rabbit
Clonality:	Polyclonal
Conjugate:	This eEF1A1 antibody is un-conjugated
Application:	Western Blotting (WB)

### Product Details

Immunogen:	Recombinant protein encompassing a sequence within the center region of human eEF1A1. The exact sequence is proprietary.
Isotype:	IgG
Specificity:	Based on a BLAST result, it may also cross with human eEF1A2.
Cross-Reactivity:	Human, Mouse, Rat
Characteristics:	Rabbit polyclonal antibody to EF-1 alpha1 (eukaryotic translation elongation factor 1 alpha 1) EF-1alpha1 antibody [N1C1]
Purification:	Purified by antigen-affinity chromatography.

### Target Details

Target:	eEF1A1 (EEF1A1)
---------	-----------------

## Target Details

---

Alternative Name:	eukaryotic translation elongation factor 1 alpha 1 ( <a href="#">EEF1A1 Products</a> )
Background:	<p>This gene encodes an isoform of the alpha subunit of the elongation factor-1 complex, which is responsible for the enzymatic delivery of aminoacyl tRNAs to the ribosome. This isoform (alpha 1) is expressed in brain, placenta, lung, liver, kidney, and pancreas, and the other isoform (alpha 2) is expressed in brain, heart and skeletal muscle. This isoform is identified as an autoantigen in 66 % of patients with Felty syndrome. This gene has been found to have multiple copies on many chromosomes, some of which, if not all, represent different pseudogenes.</p> <p>Cellular Localization: Cytoplasm</p>
Molecular Weight:	50 kDa
Gene ID:	1915
UniProt:	<a href="#">P68104</a>

## Application Details

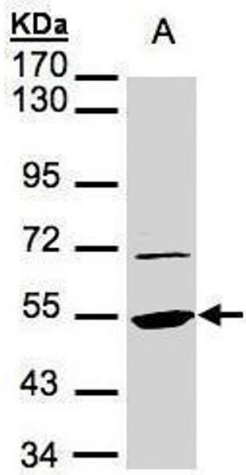
---

Application Notes:	WB: 1:500-1:3000. Optimal dilutions/concentrations should be determined by the researcher. Not tested in other applications.
Restrictions:	For Research Use only

## Handling

---

Format:	Liquid
Concentration:	0.59 mg/mL
Buffer:	0.1M Tris-Glycine ( pH 7), 10 % Glycerol, 0.01 % Thimerosal
Preservative:	Thimerosal (Merthiolate)
Precaution of Use:	This product contains Thimerosal (Merthiolate): a POISONOUS AND HAZARDOUS SUBSTANCE which should be handled by trained staff only.
Storage:	4 °C,-20 °C
Storage Comment:	Store as concentrated solution. Centrifuge briefly prior to opening vial. For short-term storage (1-2 weeks), store at 4°C. For long-term storage, aliquot and store at -20°C or below. Avoid multiple freeze-thaw cycles.



### Western Blotting

**Image 1.** WB Image Sample(30 µg of whole cell lysate)

A:293T 7.5% SDS PAGE antibody diluted at 1:1000