

Datasheet for ABIN2855346

anti-EEF2 antibody

4 Images

[Go to Product page](#)

Overview

Quantity:	100 µL
Target:	EEF2
Reactivity:	Human
Host:	Rabbit
Clonality:	Polyclonal
Conjugate:	This EEF2 antibody is un-conjugated
Application:	Western Blotting (WB), Immunohistochemistry (Paraffin-embedded Sections) (IHC (p))

Product Details

Immunogen:	Recombinant protein encompassing a sequence within the center region of human eEF2. The exact sequence is proprietary.
Isotype:	IgG
Cross-Reactivity:	Drosophila melanogaster, Human, Mouse, Rat, Zebrafish (Danio rerio)
Characteristics:	Rabbit Polyclonal antibody to EEF2 (eukaryotic translation elongation factor 2) eEF2 antibody [N2C1], Internal
Purification:	Purified by antigen-affinity chromatography.

Target Details

Target:	EEF2
Alternative Name:	eukaryotic translation elongation factor 2 (EEF2 Products)

Target Details

Background: This gene encodes a member of the GTP-binding translation elongation factor family. This protein is an essential factor for protein synthesis. It promotes the GTP-dependent translocation of the nascent protein chain from the A-site to the P-site of the ribosome. This protein is completely inactivated by EF-2 kinase phosphorylation.

Cellular Localization: Cytoplasm

Molecular Weight: 95 kDa

Gene ID: 1938

UniProt: [P13639](#)

Pathways: [AMPK Signaling](#)

Application Details

Application Notes: WB: 1:500-1:3000. IHC-P: 1:100-1:1000. Optimal dilutions/concentrations should be determined by the researcher. Not tested in other applications.

Comment: Positive Control: 293T , A431 , GL261 , NIH-3T3 , C2C12 , Neuro 2A , Raw264.7 , PC-12

Restrictions: For Research Use only

Handling

Format: Liquid

Concentration: 0.86 mg/mL

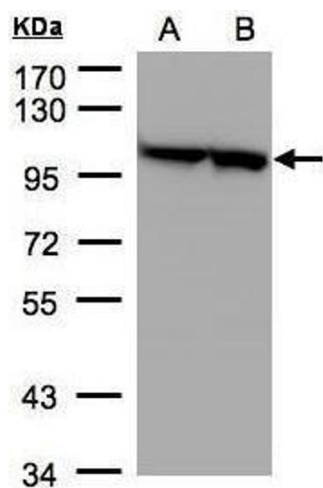
Buffer: 0.1M Tris-Glycine (pH 7), 10 % Glycerol, 0.01 % Thimerosal

Preservative: Thimerosal (Merthiolate)

Precaution of Use: This product contains Thimerosal (Merthiolate): a POISONOUS AND HAZARDOUS SUBSTANCE which should be handled by trained staff only.

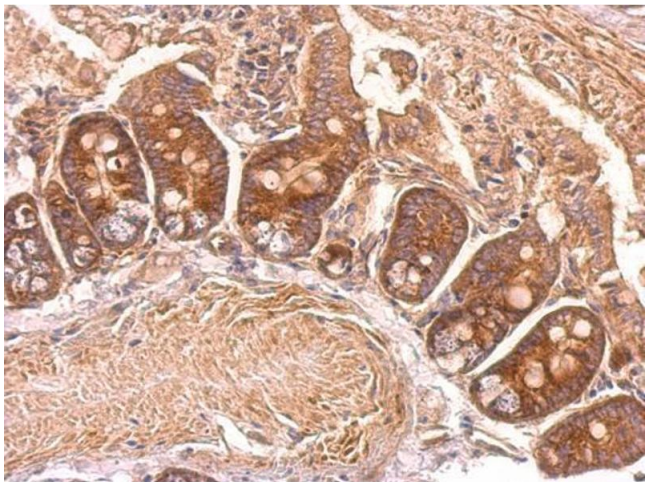
Storage: 4 °C, -20 °C

Storage Comment: Store as concentrated solution. Centrifuge briefly prior to opening vial. For short-term storage (1-2 weeks), store at 4°C. For long-term storage, aliquot and store at -20°C or below. Avoid multiple freeze-thaw cycles.



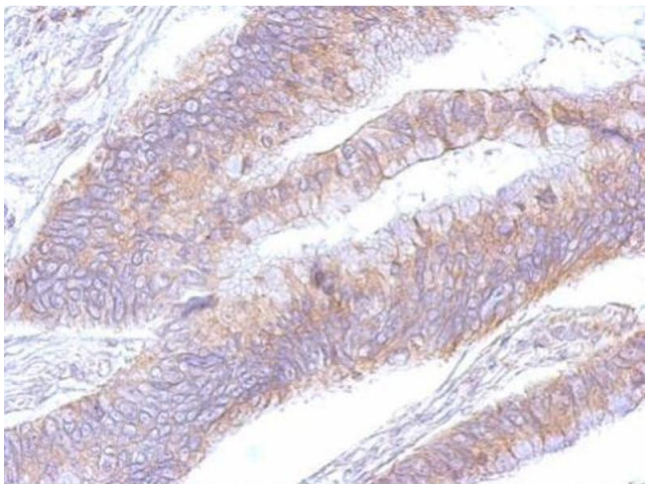
Western Blotting

Image 1. WB Image Sample(30 µg of whole cell lysate)
A:293T B:A431, 7.5% SDS PAGE antibody diluted at 1:1500



Immunohistochemistry

Image 2. IHC-P Image eEF2 antibody detects eEF2 protein at cytosol on mouse intestine by immunohistochemical analysis. Sample: Paraffin-embedded mouse intestine. eEF2 antibody , dilution: 1:500.



Immunohistochemistry

Image 3. IHC-P Image eEF2 antibody detects eEF2 protein at cytosol on human colon by immunohistochemical analysis. Sample: Paraffin-embedded colon. eEF2 antibody , dilution: 1:500.

Please check the [product details page](#) for more images. Overall 4 images are available for ABIN2855346.