

Datasheet for ABIN2855349

anti-EEF1D antibody**3** Images[Go to Product page](#)

Overview

Quantity:	100 µL
Target:	EEF1D
Reactivity:	Human
Host:	Rabbit
Clonality:	Polyclonal
Conjugate:	This EEF1D antibody is un-conjugated
Application:	Western Blotting (WB), Immunofluorescence (IF), Immunocytochemistry (ICC)

Product Details

Immunogen:	Recombinant protein encompassing a sequence within the center region of human EEF1D. The exact sequence is proprietary.
Isotype:	IgG
Cross-Reactivity:	Human, Mouse
Characteristics:	Rabbit Polyclonal antibody to EEF1D (eukaryotic translation elongation factor 1 delta (guanine nucleotide exchange protein)) EEF1D antibody [N1C3]
Purification:	Purified by antigen-affinity chromatography.

Target Details

Target:	EEF1D
Alternative Name:	eukaryotic translation elongation factor 1 delta (EEF1D Products)

Target Details

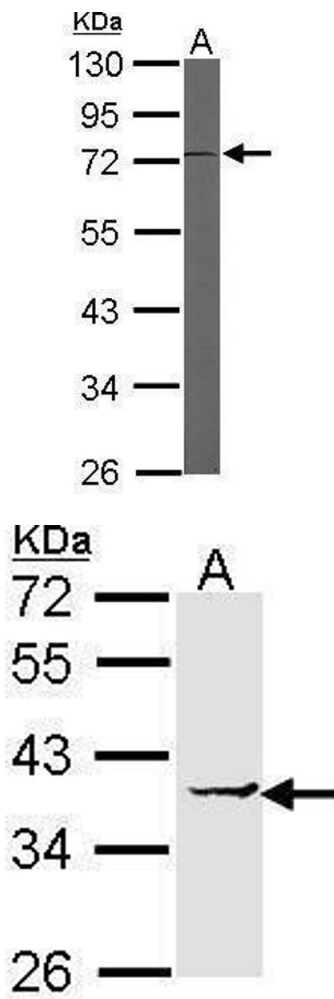
Background:	This gene encodes a subunit of the elongation factor-1 complex, which is responsible for the enzymatic delivery of aminoacyl tRNAs to the ribosome. This subunit functions as guanine nucleotide exchange factor. It is reported that this subunit interacts with HIV-1 Tat, and thus it represses the translation of host-cell, but not HIV-1, mRNAs. Several alternatively spliced transcript variants encoding multiple isoforms have been found for this gene.
Molecular Weight:	31 kDa
Gene ID:	1936
UniProt:	P29692

Application Details

Application Notes:	WB: 1:500-1:3000. ICC/IF: 1:100-1:1000. Optimal dilutions/concentrations should be determined by the researcher. Not tested in other applications.
Comment:	Positive Control: H1299 , Mouse brain
Restrictions:	For Research Use only

Handling

Format:	Liquid
Concentration:	0.91 mg/mL
Buffer:	0.1M Tris-Glycine (pH 7), 10 % Glycerol, 0.01 % Thimerosal
Preservative:	Thimerosal (Merthiolate)
Precaution of Use:	This product contains Thimerosal (Merthiolate): a POISONOUS AND HAZARDOUS SUBSTANCE which should be handled by trained staff only.
Storage:	4 °C,-20 °C
Storage Comment:	Store as concentrated solution. Centrifuge briefly prior to opening vial. For short-term storage (1-2 weeks), store at 4°C. For long-term storage, aliquot and store at -20°C or below. Avoid multiple freeze-thaw cycles.

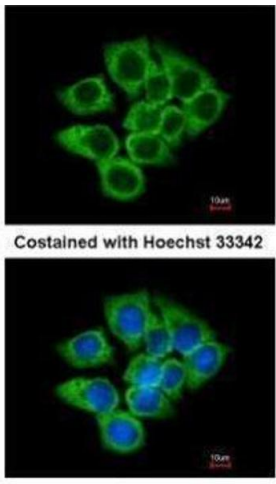


Western Blotting

Image 1. WB Image Sample (50 ug of whole cell lysate) A:
Mouse brain 10% SDS PAGE antibody diluted at 1:3000

Western Blotting

Image 2. WB Image Sample (30 ug of whole cell lysate) A:
H1299 12% SDS PAGE antibody diluted at 1:1000



Immunofluorescence

Image 3. ICC/IF Image Immunofluorescence analysis of
methanol-fixed A431, using EEf1D, antibody at 1:200
dilution.