



[Go to Product page](#)

Datasheet for ABIN2855352  
**anti-Glycerol Kinase antibody**

2 Images

### Overview

Quantity:	100 µL
Target:	Glycerol Kinase (GK)
Reactivity:	Human
Host:	Rabbit
Clonality:	Polyclonal
Conjugate:	This Glycerol Kinase antibody is un-conjugated
Application:	Western Blotting (WB), Immunofluorescence (IF), Immunocytochemistry (ICC)

### Product Details

Immunogen:	Recombinant protein encompassing a sequence within the center region of human Glycerol kinase. The exact sequence is proprietary.
Isotype:	IgG
Cross-Reactivity:	Human
Characteristics:	Rabbit polyclonal antibody to Glycerol kinase (glycerol kinase) Glycerol kinase antibody [N3C2], Internal
Purification:	Purified by antigen-affinity chromatography.

### Target Details

Target:	Glycerol Kinase (GK)
Alternative Name:	glycerol kinase ( <a href="#">GK Products</a> )

## Target Details

---

Background:	<p>The product of this gene belongs to the FGGY kinase family of proteins and encodes glycerol kinase. Glycerol kinase is a key enzyme in the regulation of glycerol uptake and metabolism. It catalyzes the phosphorylation of glycerol by ATP, yielding ADP and glycerol-3-phosphate. Defects in this gene are the cause of glycerol kinase deficiency (GKD). Alternatively spliced transcript variants encoding different isoforms have been identified.</p> <p>Cellular Localization: Mitochondrion outer membrane, Peripheral membrane protein, Cytoplasmic side , Cytoplasm</p>
-------------	---

Molecular Weight:	61 kDa
-------------------	--------

Gene ID:	2710
----------	------

UniProt:	<a href="#">P32189</a>
----------	------------------------

## Application Details

---

Application Notes:	WB: 1:500-1:3000. ICC/IF: 1:100-1:1000. Optimal dilutions/concentrations should be determined by the researcher. Not tested in other applications.
--------------------	--

Comment:	Positive Control: HeLa
----------	------------------------

Restrictions:	For Research Use only
---------------	-----------------------

## Handling

---

Format:	Liquid
---------	--------

Concentration:	0.28 mg/mL
----------------	------------

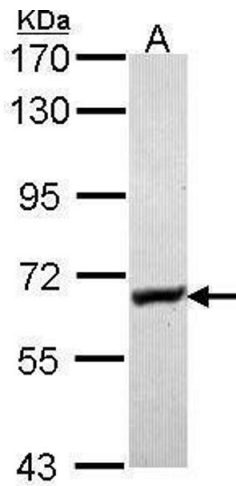
Buffer:	0.1M Tris-Glycine ( pH 7), 10 % Glycerol, 0.01 % Thimerosal
---------	---

Preservative:	Thimerosal (Merthiolate)
---------------	--------------------------

Precaution of Use:	This product contains Thimerosal (Merthiolate): a POISONOUS AND HAZARDOUS SUBSTANCE which should be handled by trained staff only.
--------------------	--

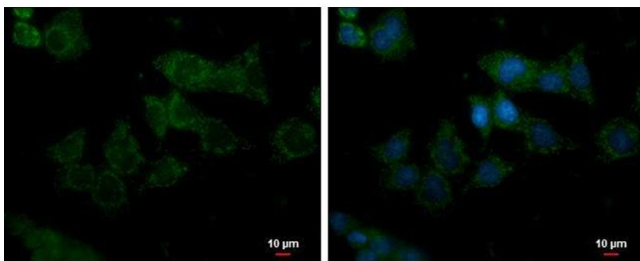
Storage:	4 °C,-20 °C
----------	-------------

Storage Comment:	Store as concentrated solution. Centrifuge briefly prior to opening vial. For short-term storage (1-2 weeks), store at 4°C. For long-term storage, aliquot and store at -20°C or below. Avoid multiple freeze-thaw cycles.
------------------	--



### Western Blotting

**Image 1.** WB Image Sample (30 µg of whole cell lysate) A: HeLa 7.5% SDS PAGE antibody diluted at 1:500



### Immunofluorescence

**Image 2.** ICC/IF Image Glycerol kinase antibody [N3C2], Internal detects Glycerol kinase protein at mitochondria by immunofluorescent analysis. Sample: Huh-7 cells were fixed in 2% paraformaldehyde/culture medium at 37°C for 30 min. Green: Glycerol kinase protein stained by Glycerol kinase antibody [N3C2], Internal, diluted at 1:200. Blue: Hoechst 33342 staining. Scale bar = 10 µm.