

Datasheet for ABIN2855356
anti-CLOCK antibody (C-Term)



[Go to Product page](#)

2 Images

Overview

Quantity:	100 µL
Target:	CLOCK
Binding Specificity:	C-Term
Reactivity:	Human, Mouse
Host:	Rabbit
Clonality:	Polyclonal
Application:	Western Blotting (WB), Immunocytochemistry (ICC), Immunofluorescence (IF)

Product Details

Immunogen:	Recombinant protein encompassing a sequence within the C-terminus region of human CLOCK. The exact sequence is proprietary.
Isotype:	IgG
Characteristics:	Rabbit Polyclonal antibody to CLOCK (clock homolog (mouse)) CLOCK antibody [C2C3], C-term
Purification:	Purified by antigen-affinity chromatography.

Target Details

Target:	CLOCK
Alternative Name:	CLOCK (CLOCK Products)
Background:	This gene encodes a protein that belongs to the basic helix-loop-helix (bHLH) family of transcription factors. Polymorphisms within the encoded protein have been associated with

Target Details

circadian rhythm sleep disorders. A similar protein in mice is a circadian regulator that acts as a transcription factor and forms a heterodimer with aryl hydrocarbon receptor nuclear translocator-like to activate transcription of mouse period 1.

Cellular Localization: Cytoplasm , Nucleus

Molecular Weight: 95 kDa

Gene ID: 9575

Pathways: [Regulation of Lipid Metabolism by PPARalpha](#), [Photoperiodism](#)

Application Details

Application Notes: Suggested dilution Reference ICC/IF 1:100-1:1000* Western blot 1:500-1:3000* Not tested in other applications. *Optimal dilutions/concentrations should be determined by the researcher.Suggested dilutionReferenceICC/IF1:100-1:1000* Western blot1:500-1:3000*

Comment: Positive Control: Mouse brain

Restrictions: For Research Use only

Handling

Format: Liquid

Concentration: 1 mg/mL

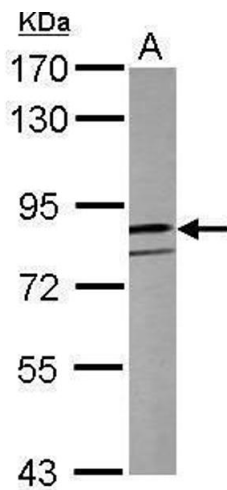
Buffer: 0.1M Tris, 0.1M Glycine, 10 % Glycerol (pH 7). 0.01 % Thimerosal was added as a preservative.

Preservative: Thimerosal (Merthiolate)

Precaution of Use: This product contains Thimerosal (Merthiolate): a POISONOUS AND HAZARDOUS SUBSTANCE which should be handled by trained staff only.

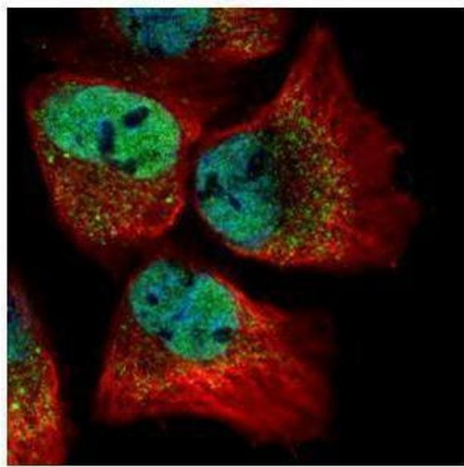
Storage: -20 °C

Storage Comment: Keep as concentrated solution. Aliquot and store at -20°C or below. Avoid multiple freeze-thaw cycles.



Western Blotting

Image 1. WB Image Sample (50 ug of whole cell lysate) A:
Mouse brain 7.5% SDS PAGE antibody diluted at 1:500



Immunofluorescence

Image 2. ICC/IF Image Confocal immunofluorescence analysis (Olympus FV10i) of paraformaldehyde-fixed A431, using CLOCK, antibody (Green) at 1:500 dilution. Alpha-tubulin filaments were labeled with (Red) at 1:2000.