

Datasheet for ABIN2855363

**anti-CAPN1 antibody**

5 Images

[Go to Product page](#)

## Overview

Quantity:	100 µL
Target:	CAPN1
Reactivity:	Human
Host:	Rabbit
Clonality:	Polyclonal
Conjugate:	This CAPN1 antibody is un-conjugated
Application:	Western Blotting (WB), Immunoprecipitation (IP), Immunocytochemistry (ICC), Immunohistochemistry (Paraffin-embedded Sections) (IHC (p)), Immunofluorescence (IF)

## Product Details

Immunogen:	Recombinant protein encompassing a sequence within the center region of human Calpain 1. The exact sequence is proprietary.
Isotype:	IgG
Cross-Reactivity:	Human, Mouse, Squirrel
Characteristics:	Rabbit Polyclonal antibody to Calpain 1 (calpain 1, (mu/l) large subunit) Calpain 1 antibody [N3C2], Internal
Purification:	Purified by antigen-affinity chromatography.

## Target Details

Target:	CAPN1
Alternative Name:	calpain 1 ( <a href="#">CAPN1 Products</a> )

## Target Details

**Background:** The calpains, calcium-activated neutral proteases, are nonlysosomal, intracellular cysteine proteases. The mammalian calpains include ubiquitous, stomach-specific, and muscle-specific proteins. The ubiquitous enzymes consist of heterodimers with distinct large, catalytic subunits associated with a common small, regulatory subunit. This gene encodes the large subunit of the ubiquitous enzyme, calpain 1.

**Molecular Weight:** 82 kDa

**Gene ID:** 823

**UniProt:** [P07384](#)

## Application Details

**Application Notes:** WB: 1:500-1:3000. ICC/IF: 1:100-1:1000. IHC-P: 1:100-1:1000. IP: 1:100-1:500. Optimal dilutions/concentrations should be determined by the researcher. Not tested in other applications.

**Comment:** Positive Control: 293T , A431 , HeLa , HepG2  
Validation: Orthogonal

**Restrictions:** For Research Use only

## Handling

**Format:** Liquid

**Concentration:** 0.97 mg/mL

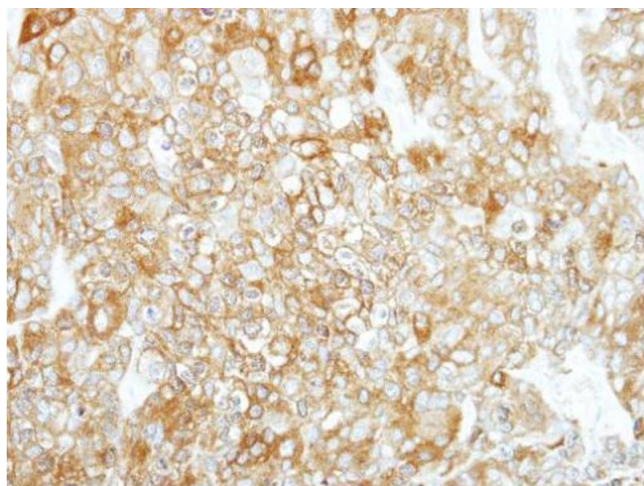
**Buffer:** 0.1M Tris-Glycine ( pH 7), 20 % Glycerol, 0.01 % Thimerosal

**Preservative:** Thimerosal (Merthiolate)

**Precaution of Use:** This product contains Thimerosal (Merthiolate): a POISONOUS AND HAZARDOUS SUBSTANCE which should be handled by trained staff only.

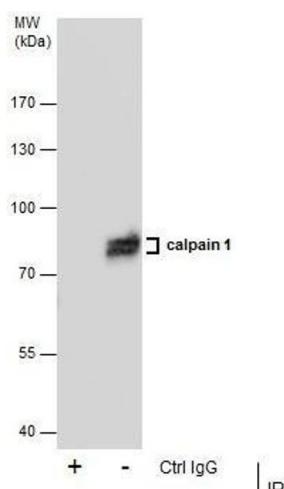
**Storage:** 4 °C,-20 °C

**Storage Comment:** Store as concentrated solution. Centrifuge briefly prior to opening vial. For short-term storage (1-2 weeks), store at 4°C. For long-term storage, aliquot and store at -20°C or below. Avoid multiple freeze-thaw cycles.



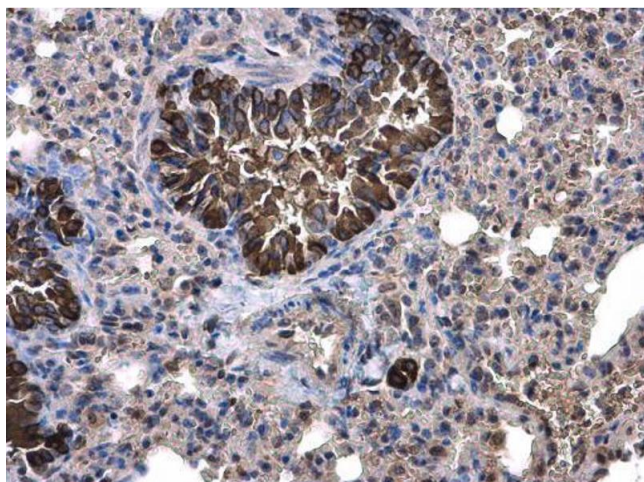
#### Immunohistochemistry

**Image 1.** IHC-P Image Immunohistochemical analysis of paraffin-embedded BT474 xenograft, using Calpain 1, antibody at 1:500 dilution.



#### Immunoprecipitation

**Image 2.** IP Image Immunoprecipitation of Calpain 1 protein from A431 whole cell extracts using 5 µg of Calpain 1 antibody [N3C2]. Internal, Western blot analysis was performed using Calpain 1 antibody [N3C2], Internal, EasyBlot anti-Rabbit IgG was used as a secondary reagent.



#### Immunohistochemistry

**Image 3.** IHC-P Image Calpain 1 antibody [N3C2], Internal detects Calpain 1 protein at cytoplasm on mouse lung by immunohistochemical analysis. Sample: Paraffin-embedded mouse lung. Calpain 1 antibody [N3C2], Internal, diluted at 1:500.

Please check the [product details page](#) for more images. Overall 5 images are available for ABIN2855363.