

Datasheet for ABIN2855365

**anti-CAPN1 antibody****3** Images[Go to Product page](#)

## Overview

Quantity:	100 µL
Target:	CAPN1
Reactivity:	Human
Host:	Rabbit
Clonality:	Polyclonal
Conjugate:	This CAPN1 antibody is un-conjugated
Application:	Western Blotting (WB), Immunocytochemistry (ICC), Flow Cytometry (FACS), Immunohistochemistry (Paraffin-embedded Sections) (IHC (p)), Immunofluorescence (IF)

## Product Details

Immunogen:	Recombinant protein encompassing a sequence within the center region of human Calpain 1. The exact sequence is proprietary.
Isotype:	IgG
Cross-Reactivity:	Human, Zebrafish (Danio rerio)
Characteristics:	Rabbit Polyclonal antibody to Calpain 1 (calpain 1, (mu/l) large subunit) Calpain 1 antibody
Purification:	Purified by antigen-affinity chromatography.

## Target Details

Target:	CAPN1
Alternative Name:	calpain 1 ( <a href="#">CAPN1 Products</a> )

## Target Details

**Background:** The calpains, calcium-activated neutral proteases, are nonlysosomal, intracellular cysteine proteases. The mammalian calpains include ubiquitous, stomach-specific, and muscle-specific proteins. The ubiquitous enzymes consist of heterodimers with distinct large, catalytic subunits associated with a common small, regulatory subunit. This gene encodes the large subunit of the ubiquitous enzyme, calpain 1.

Cellular Localization: Cytoplasm , Cell membrane

**Molecular Weight:** 82 kDa

**Gene ID:** 823

**UniProt:** [P07384](#)

## Application Details

**Application Notes:** WB: 1:500-1:3000. ICC/IF: 1:100-1:1000. IHC-P: 1:100-1:1000. Optimal dilutions/concentrations should be determined by the researcher. Not tested in other applications.

**Comment:** Positive Control: Jurkat

**Restrictions:** For Research Use only

## Handling

**Format:** Liquid

**Concentration:** 0.55 mg/mL

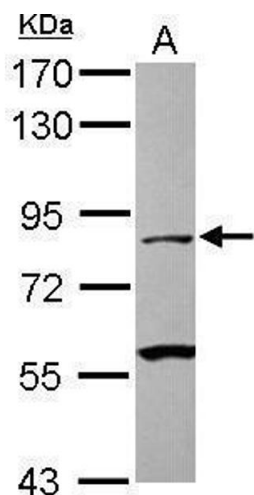
**Buffer:** 0.1M Tris-Glycine ( pH 7), 20 % Glycerol, 0.01 % Thimerosal

**Preservative:** Thimerosal (Merthiolate)

**Precaution of Use:** This product contains Thimerosal (Merthiolate): a POISONOUS AND HAZARDOUS SUBSTANCE which should be handled by trained staff only.

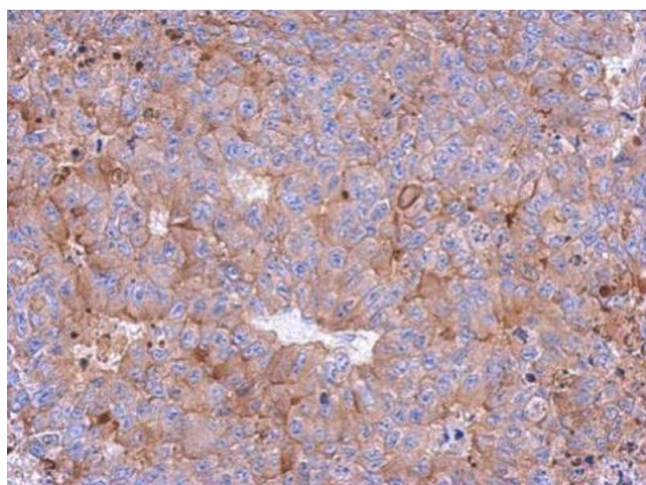
**Storage:** 4 °C, -20 °C

**Storage Comment:** Store as concentrated solution. Centrifuge briefly prior to opening vial. For short-term storage (1-2 weeks), store at 4°C. For long-term storage, aliquot and store at -20°C or below. Avoid multiple freeze-thaw cycles.



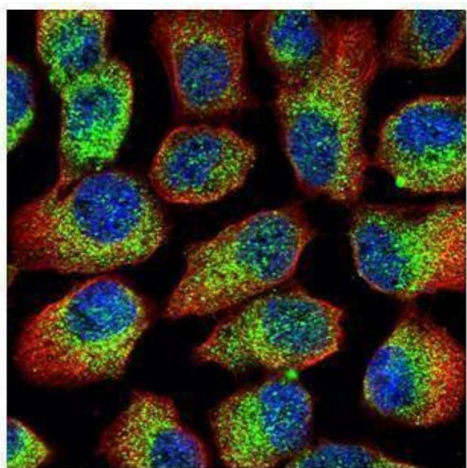
#### Western Blotting

**Image 1.** WB Image Sample (30 ug of whole cell lysate) A: Jurkat 7.5% SDS PAGE antibody diluted at 1:1000



#### Immunohistochemistry

**Image 2.** IHC-P Image Immunohistochemical analysis of paraffin-embedded PC13 xenograft, using Calpain 1, antibody at 1:500 dilution.



#### Immunofluorescence

**Image 3.** ICC/IF Image Confocal immunofluorescence analysis (Olympus FV10i) of methanol-fixed A431, using Calpain 1, antibody (Green) at 1:500 dilution. Alpha-tubulin filaments were labeled with (Red) at 1:2000.