

Datasheet for ABIN2855370

anti-DP2 antibody

2 Images

[Go to Product page](#)

Overview

Quantity:	100 µL
Target:	DP2 (TFDP2)
Reactivity:	Human
Host:	Rabbit
Clonality:	Polyclonal
Conjugate:	This DP2 antibody is un-conjugated
Application:	Western Blotting (WB)

Product Details

Immunogen:	Recombinant protein encompassing a sequence within the center region of human DP2. The exact sequence is proprietary.
Isotype:	IgG
Cross-Reactivity:	Human, Mouse
Characteristics:	Rabbit Polyclonal antibody to DP2 (transcription factor Dp-2 (E2F dimerization partner 2)) DP2 antibody [N2C1], Internal
Purification:	Purified by antigen-affinity chromatography.

Target Details

Target:	DP2 (TFDP2)
Alternative Name:	transcription factor Dp-2 (TFDP2 Products)

Target Details

Background: The gene is a member of the transcription factor DP family. The encoded protein forms heterodimers with the E2F transcription factors resulting in transcriptional activation of cell cycle regulated genes. Alternative splicing results in multiple transcript variants.

Cellular Localization: Nucleus

Molecular Weight: 49 kDa

Gene ID: 7029

UniProt: [Q14188](#)

Pathways: [Cell Division Cycle](#), [Mitotic G1-G1/S Phases](#)

Application Details

Application Notes: WB: 1:500-1:3000. Optimal dilutions/concentrations should be determined by the researcher.
Not tested in other applications.

Comment: Positive Control: PC-3 , mouse muscle

Restrictions: For Research Use only

Handling

Format: Liquid

Concentration: 0.98 mg/mL

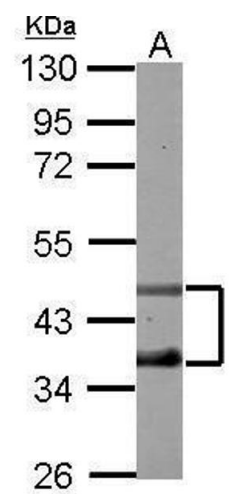
Buffer: 0.1M Tris-Glycine (pH 7), 20 % Glycerol, 0.01 % Thimerosal

Preservative: Thimerosal (Merthiolate)

Precaution of Use: This product contains Thimerosal (Merthiolate): a POISONOUS AND HAZARDOUS SUBSTANCE which should be handled by trained staff only.

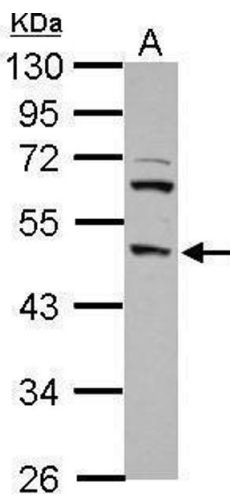
Storage: 4 °C,-20 °C

Storage Comment: Store as concentrated solution. Centrifuge briefly prior to opening vial. For short-term storage (1-2 weeks), store at 4°C. For long-term storage, aliquot and store at -20°C or below. Avoid multiple freeze-thaw cycles.



Western Blotting

Image 1. WB Image Sample (50 ug of whole cell lysate) A: mouse muscle 10% SDS PAGE antibody diluted at 1:1000



Western Blotting

Image 2. WB Image Sample (30 ug of whole cell lysate) A: PC-3 10% SDS PAGE antibody diluted at 1:1000