



Datasheet for ABIN2855371  
**anti-NLRC4 antibody (N-Term)**



[Go to Product page](#)

2 Images

Overview

Quantity:	100 µL
Target:	NLRC4
Binding Specificity:	N-Term
Reactivity:	Human
Host:	Rabbit
Clonality:	Polyclonal
Conjugate:	This NLRC4 antibody is un-conjugated
Application:	Western Blotting (WB)

Product Details

Immunogen:	Recombinant protein encompassing a sequence within the N-terminus region of human CARD12. The exact sequence is proprietary.
Isotype:	IgG
Cross-Reactivity:	Human
Characteristics:	Rabbit Polyclonal antibody to CARD12 (NLR family, CARD domain containing 4) CARD12 antibody [N1], N-term
Purification:	Purified by antigen-affinity chromatography.

Target Details

Target:	NLRC4
---------	-------

## Target Details

---

Alternative Name:	NLR family CARD domain containing 4 ( <a href="#">NLRC4 Products</a> )
Background:	<p>In <i>C. elegans</i>, Ced4 binds and activates Ced3, an apoptotic initiator caspase, via caspase-associated recruitment domains (CARDs). Human Ced4 homologs include APAF1 (MIM 602233), NOD1/CARD4 (MIM 605980), and NOD2/CARD15 (MIM 605956). These proteins have at least 1 N-terminal CARD domain followed by a centrally located nucleotide-binding domain (NBD or NACHT) and a C-terminal regulatory domain, found only in mammals, that contains either WD40 repeats or leucine-rich repeats (LRRs). CARD12 is a member of the Ced4 family and can induce apoptosis.[supplied by OMIM]</p> <p>Cellular Localization: Cytoplasm</p>
Molecular Weight:	116 kDa
Gene ID:	58484
UniProt:	<a href="#">Q9NPP4</a>
Pathways:	<a href="#">Activation of Innate immune Response</a> , <a href="#">Positive Regulation of Endopeptidase Activity</a> , <a href="#">Inflammasome</a>

## Application Details

---

Application Notes:	WB: 1:500-1:10000. Optimal dilutions/concentrations should be determined by the researcher. Not tested in other applications.
Comment:	Positive Control: MCF-7 , human NLRC4-transfected 293T cells Validation: Overexpression
Restrictions:	For Research Use only

## Handling

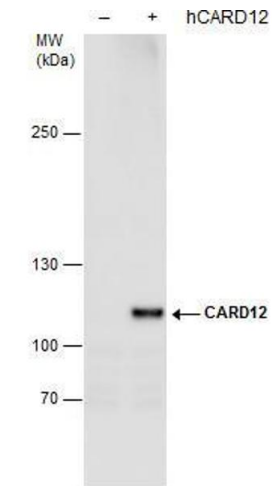
---

Format:	Liquid
Concentration:	1 mg/mL
Buffer:	1XPBS ( pH 7), 20 % Glycerol, 0.01 % Thimerosal
Preservative:	Thimerosal (Merthiolate)
Precaution of Use:	This product contains Thimerosal (Merthiolate): a POISONOUS AND HAZARDOUS SUBSTANCE which should be handled by trained staff only.
Storage:	4 °C,-20 °C

## Handling

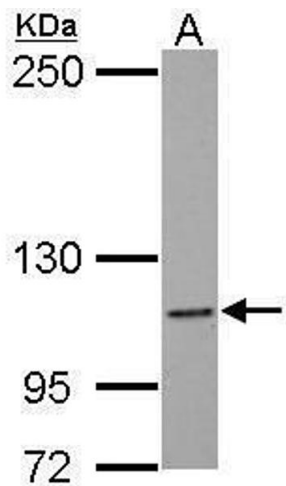
Storage Comment: Store as concentrated solution. Centrifuge briefly prior to opening vial. For short-term storage (1-2 weeks), store at 4°C. For long-term storage, aliquot and store at -20°C or below. Avoid multiple freeze-thaw cycles.

## Images



### Western Blotting

**Image 1.** WB Image CARD12 antibody detects CARD12 protein by western blot analysis. Non-transfected (-) and CARD12-transfected (+) 293T whole cell extracts (30 µg) were separated by 5% SDS-PAGE, and the membrane was blotted with CARD12 antibody, diluted by 1:5000.



### Western Blotting

**Image 2.** WB Image Sample (30 ug of whole cell lysate) A: MCF-7 5% SDS PAGE antibody diluted at 1:1000