

Datasheet for ABIN2855372

anti-FAF1 antibody**2** Images[Go to Product page](#)

Overview

Quantity:	100 µL
Target:	FAF1
Reactivity:	Human
Host:	Rabbit
Clonality:	Polyclonal
Conjugate:	This FAF1 antibody is un-conjugated
Application:	Western Blotting (WB)

Product Details

Immunogen:	Recombinant protein encompassing a sequence within the center region of human FAF1. The exact sequence is proprietary.
Isotype:	IgG
Cross-Reactivity:	Human, Mouse
Characteristics:	Rabbit polyclonal antibody to FAF1 (Fas (TNFRSF6) associated factor 1) FAF1 antibody
Purification:	Purified by antigen-affinity chromatography.

Target Details

Target:	FAF1
Alternative Name:	Fas associated factor 1 (FAF1 Products)

Target Details

Background: Interaction of Fas ligand (TNFSF6) with the FAS antigen (TNFRSF6) mediates programmed cell death, also called apoptosis, in a number of organ systems. The protein encoded by this gene binds to FAS antigen and can initiate apoptosis or enhance apoptosis initiated through FAS antigen. Initiation of apoptosis by the protein encoded by this gene requires a ubiquitin-like domain but not the FAS-binding domain.

Cellular Localization: Nucleus

Molecular Weight: 74 kDa

Gene ID: 11124

UniProt: [Q9UNN5](#)

Pathways: [Maintenance of Protein Location](#)

Application Details

Application Notes: WB: 1:500-1:3000. Optimal dilutions/concentrations should be determined by the researcher.
Not tested in other applications.

Comment: Positive Control: H1299 , NIH-3T3

Restrictions: For Research Use only

Handling

Format: Liquid

Concentration: 0.66 mg/mL

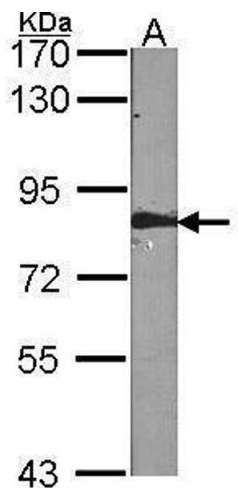
Buffer: 1XPBS (pH 7), 10 % Glycerol, 0.01 % Thimerosal

Preservative: Thimerosal (Merthiolate)

Precaution of Use: This product contains Thimerosal (Merthiolate): a POISONOUS AND HAZARDOUS SUBSTANCE which should be handled by trained staff only.

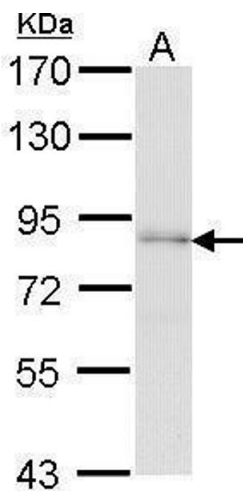
Storage: 4 °C,-20 °C

Storage Comment: Store as concentrated solution. Centrifuge briefly prior to opening vial. For short-term storage (1-2 weeks), store at 4°C. For long-term storage, aliquot and store at -20°C or below. Avoid multiple freeze-thaw cycles.



Western Blotting

Image 1. WB Image Sample (30 ug of whole cell lysate)
A:NIH-3T3 7.5% SDS PAGE antibody diluted at 1:1000



Western Blotting

Image 2. WB Image Sample (30 ug of whole cell lysate) A:
H1299 7.5% SDS PAGE antibody diluted at 1:1000