



Datasheet for ABIN2855374
anti-TRAF1 antibody



[Go to Product page](#)

2 Images

Overview

Quantity:	100 µL
Target:	TRAF1
Reactivity:	Human
Host:	Rabbit
Clonality:	Polyclonal
Conjugate:	This TRAF1 antibody is un-conjugated
Application:	Western Blotting (WB), Immunohistochemistry (Paraffin-embedded Sections) (IHC (p))

Product Details

Immunogen:	Recombinant protein encompassing a sequence within the center region of human TRAF1. The exact sequence is proprietary.
Isotype:	IgG
Cross-Reactivity:	Human
Characteristics:	Rabbit Polyclonal antibody to TRAF1 (TNF receptor-associated factor 1) TRAF1 antibody [N1C1]
Purification:	Purified by antigen-affinity chromatography.

Target Details

Target:	TRAF1
Alternative Name:	TNF receptor associated factor 1 (TRAF1 Products)

Target Details

Background: The protein encoded by this gene is a member of the TNF receptor (TNFR) associated factor (TRAF) protein family. TRAF proteins associate with, and mediate the signal transduction from various receptors of the TNFR superfamily. This protein and TRAF2 form a heterodimeric complex, which is required for TNF-alpha-mediated activation of MAPK8/JNK and NF-kappaB. The protein complex formed by this protein and TRAF2 also interacts with inhibitor-of-apoptosis proteins (IAPs), and thus mediates the anti-apoptotic signals from TNF receptors. The expression of this protein can be induced by Epstein-Barr virus (EBV). EBV infection membrane protein 1 (LMP1) is found to interact with this and other TRAF proteins, this interaction is thought to link LMP1-mediated B lymphocyte transformation to the signal transduction from TNFR family receptors.

Molecular Weight: 46 kDa

Gene ID: 7185

UniProt: [Q13077](#)

Pathways: [NF-kappaB Signaling](#), [Apoptosis](#), [Cell-Cell Junction Organization](#), [Asymmetric Protein Localization](#)

Application Details

Application Notes: WB: 1:500-1:3000. IHC-P: 1:100-1:1000. Optimal dilutions/concentrations should be determined by the researcher. Not tested in other applications.

Comment: Positive Control: Raji

Restrictions: For Research Use only

Handling

Format: Liquid

Concentration: 0.87 mg/mL

Buffer: 0.1M Tris-Glycine (pH 7), 10 % Glycerol, 0.01 % Thimerosal

Preservative: Thimerosal (Merthiolate)

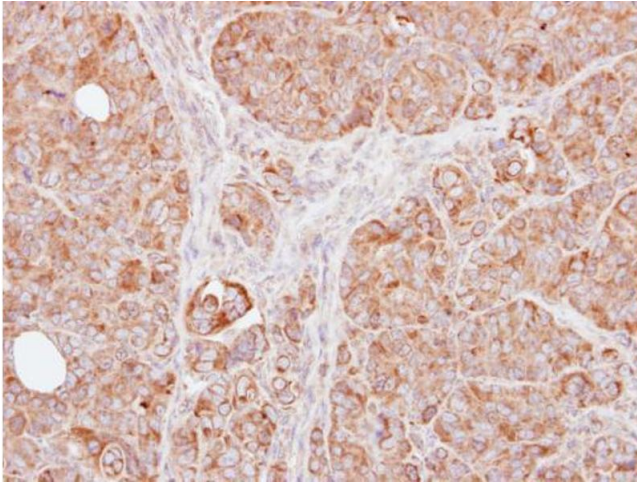
Precaution of Use: This product contains Thimerosal (Merthiolate): a POISONOUS AND HAZARDOUS SUBSTANCE which should be handled by trained staff only.

Storage: 4 °C, -20 °C

Handling

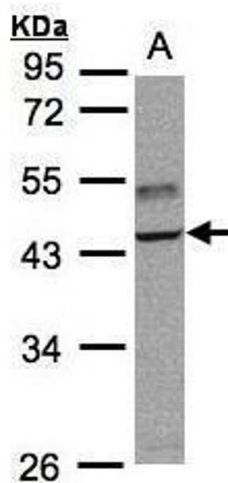
Storage Comment: Store as concentrated solution. Centrifuge briefly prior to opening vial. For short-term storage (1-2 weeks), store at 4°C. For long-term storage, aliquot and store at -20°C or below. Avoid multiple freeze-thaw cycles.

Images



Immunohistochemistry

Image 1. IHC-P Image Immunohistochemical analysis of paraffin-embedded SW480 xenograft, using TRAF1, antibody at 1:100 dilution.



Western Blotting

Image 2. WB Image Sample(30 ug whole cell lysate) A:Raji , 10% SDS PAGE antibody diluted at 1:3000