

Datasheet for ABIN2855376

anti-Nerve Growth Factor Receptor (TNFRSF16) Associated Protein 1 (NGFRAP1) (Center) antibody[Go to Product page](#)**3** Images

Overview

Quantity:	100 µL
Target:	Nerve Growth Factor Receptor (TNFRSF16) Associated Protein 1 (NGFRAP1)
Binding Specificity:	Center
Reactivity:	Human
Host:	Rabbit
Clonality:	Polyclonal
Conjugate:	Un-conjugated
Application:	Western Blotting (WB), Immunofluorescence (IF), Immunohistochemistry (Paraffin-embedded Sections) (IHC (p)), Immunocytochemistry (ICC)

Product Details

Immunogen:	Recombinant protein encompassing a sequence within the center region of human NADE. The exact sequence is proprietary.
Isotype:	IgG
Cross-Reactivity:	Rhesus Monkey
Cross-Reactivity (Details):	Rhesus Monkey (100 %)
Characteristics:	Rabbit Polyclonal antibody to NADE (nerve growth factor receptor (TNFRSF16) associated protein 1) NADE antibody [N1C3]
Purification:	Purified by antigen-affinity chromatography.

Target Details

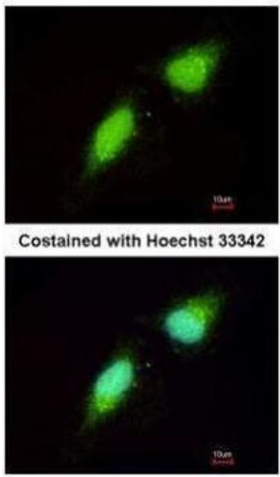
Target:	Nerve Growth Factor Receptor (TNFRSF16) Associated Protein 1 (NGFRAP1)
Alternative Name:	NADE (NGFRAP1 Products)
Background:	May be a signaling adapter molecule involved in p75NTR-mediated apoptosis induced by NGF. Plays a role in zinc-triggered neuronal death (By similarity). May play an important role in the pathogenesis of neurogenetic diseases. Cellular Localization: Nucleus , Cytoplasm
Molecular Weight:	13 kDa
Gene ID:	27018
Pathways:	Neurotrophin Signaling Pathway , Positive Regulation of Endopeptidase Activity

Application Details

Application Notes:	Suggested dilution Reference ICC/IF 1:100-1:1000* IHC (Formalin-fixed paraffin-embedded sections) 1:100-1:1000* Western blot 1:500-1:3000* Not tested in other applications. *Optimal dilutions/concentrations should be determined by the researcher.Suggested dilutionReferenceICC/IF1:100-1:1000* IHC (Formalin-fixed paraffin-embedded sections)1:100-1:1000* Western blot1:500-1:3000*
Comment:	Positive Control: 293T , A431 , H1299 , HeLa , HepG2 , Molt-4 , Raji
Restrictions:	For Research Use only

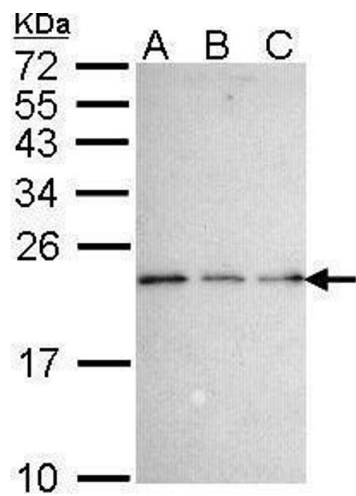
Handling

Format:	Liquid
Concentration:	0.38 mg/mL
Buffer:	1XPBS, 10 % Glycerol (pH 7). 0.01 % Thimerosal was added as a preservative.
Preservative:	Thimerosal (Merthiolate)
Precaution of Use:	This product contains Thimerosal (Merthiolate): a POISONOUS AND HAZARDOUS SUBSTANCE which should be handled by trained staff only.
Storage:	-20 °C
Storage Comment:	Keep as concentrated solution. Aliquot and store at -20°C or below. Avoid multiple freeze-thaw cycles.



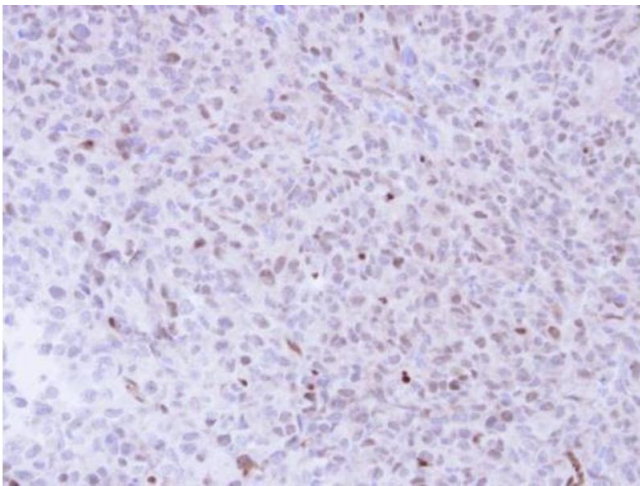
Immunofluorescence

Image 1. ICC/IF Image Immunofluorescence analysis of paraformaldehyde-fixed HeLa, using NADE, antibody at 1:200 dilution.



Western Blotting

Image 2. WB Image Sample (30 ug of whole cell lysate) A: 293T B: A431 , C: H1299 15% SDS PAGE antibody diluted at 1:1000



Immunohistochemistry

Image 3. IHC-P Image Immunohistochemical analysis of paraffin-embedded H1299 Xenograft , using NGFRAP1, antibody at 1:100 dilution.