

Datasheet for ABIN2855377
anti-ATP2A3 antibody (N-Term)

3 Images

[Go to Product page](#)

Overview

Quantity:	100 µL
Target:	ATP2A3
Binding Specificity:	N-Term
Reactivity:	Human, Mouse
Host:	Rabbit
Clonality:	Polyclonal
Conjugate:	This ATP2A3 antibody is un-conjugated
Application:	Western Blotting (WB), Immunohistochemistry (Paraffin-embedded Sections) (IHC (p))

Product Details

Immunogen:	Recombinant protein encompassing a sequence within the N-terminus region of human SERCA3. The exact sequence is proprietary.
Isotype:	IgG
Cross-Reactivity:	Chicken, Rat (Rattus), Xenopus laevis, Cow (Bovine), Xenopus tropicalis
Cross-Reactivity (Details):	Chicken (88 %), Rat (99 %), Xenopus laevis (92 %), Bovine (98 %), Xenopus tropicalis (91 %)
Characteristics:	Rabbit Polyclonal antibody to SERCA3 (ATPase, Ca ⁺⁺ transporting, ubiquitous) SERCA3 antibody [N1N2], N-term
Purification:	Purified by antigen-affinity chromatography.

Target Details

Target:	ATP2A3
Alternative Name:	SERCA3 (ATP2A3 Products)
Background:	<p>This gene encodes one of the SERCA Ca(2+)-ATPases, which are intracellular pumps located in the sarcoplasmic or endoplasmic reticula of muscle cells. This enzyme catalyzes the hydrolysis of ATP coupled with the translocation of calcium from the cytosol to the sarcoplasmic reticulum lumen, and is involved in calcium sequestration associated with muscular excitation and contraction. Alternative splicing results in multiple transcript variants encoding different isoforms.</p> <p>Cellular Localization: Nucleus membrane , Endoplasmic reticulum membrane , Sarcoplasmic reticulum membrane</p>
Molecular Weight:	114 kDa
Gene ID:	489
Pathways:	Myometrial Relaxation and Contraction , Ribonucleoside Biosynthetic Process

Application Details

Application Notes:	<p>Suggested dilution Reference IHC (Formalin-fixed paraffin-embedded sections) 1:100-1:1000* Western blot 1:1000-1:10000* Not tested in other applications. *Optimal dilutions/concentrations should be determined by the researcher.Suggested dilutionReferenceIHC (Formalin-fixed paraffin-embedded sections)1:100-1:1000* Western blot1:1000-1:10000*</p>
Comment:	Positive Control: Jurkat , Raji , K562 , BCL-1
Restrictions:	For Research Use only

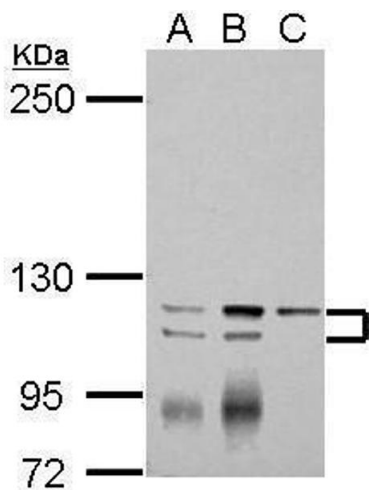
Handling

Format:	Liquid
Concentration:	1 mg/mL
Buffer:	1XPBS, 1 % BSA, 20 % Glycerol (pH 7). 0.01 % Thimerosal was added as a preservative.
Preservative:	Thimerosal (Merthiolate)
Precaution of Use:	This product contains Thimerosal (Merthiolate): a POISONOUS AND HAZARDOUS SUBSTANCE which should be handled by trained staff only.

Handling

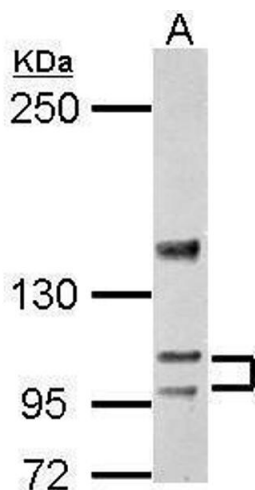
Storage:	-20 °C
Storage Comment:	Keep as concentrated solution. Aliquot and store at -20°C or below. Avoid multiple freeze-thaw cycles.

Validation report #104383 for Cleavage Under Targets and Release Using Nuclease (CUT&RUN)



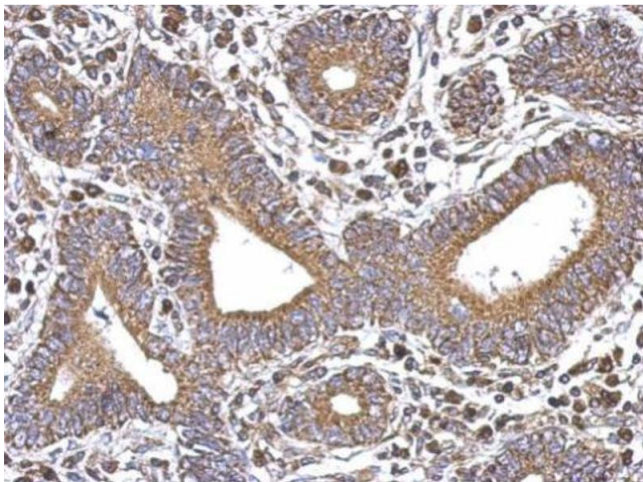
Western Blotting

Image 1. WB Image Sample (30 ug of whole cell lysate) A: Jurkat B: Raji C: K562 5% SDS PAGE antibody diluted at 1:2000



Western Blotting

Image 2. WB Image Sample (30 ug of whole cell lysate) A: BCL-1 5% SDS PAGE antibody diluted at 1:5000



Immunohistochemistry

Image 3. IHC-P Image Immunohistochemical analysis of paraffin-embedded human colon carcinoma, using SERCA3, antibody at 1:500 dilution.