



Datasheet for ABIN2855392
anti-Albumin antibody (C-Term)



[Go to Product page](#)

5 Images

4 Publications

Overview

Quantity:	100 µL
Target:	Albumin (ALB)
Binding Specificity:	C-Term
Reactivity:	Human
Host:	Rabbit
Clonality:	Polyclonal
Conjugate:	This Albumin antibody is un-conjugated
Application:	Western Blotting (WB), Immunohistochemistry (IHC), Immunocytochemistry (ICC), Immunofluorescence (IF), Immunohistochemistry (Paraffin-embedded Sections) (IHC (p)), Immunohistochemistry (Frozen Sections) (IHC (fro))

Product Details

Immunogen:	Recombinant protein encompassing a sequence within the C-terminus region of human Albumin. The exact sequence is proprietary.
Isotype:	IgG
Cross-Reactivity:	Cat, Dog, Human, Mouse, Rat
Characteristics:	Rabbit Polyclonal antibody to Albumin antibody Albumin antibody
Purification:	Purified by antigen-affinity chromatography.

Target Details

Target:	Albumin (ALB)
Alternative Name:	albumin (ALB Products)
Background:	<p>Albumin is a soluble, monomeric protein which comprises about one-half of the blood serum protein. Albumin functions primarily as a carrier protein for steroids, fatty acids, and thyroid hormones and plays a role in stabilizing extracellular fluid volume. Albumin is a globular unglycosylated serum protein of molecular weight 65,000. Albumin is synthesized in the liver as prealbumin which has an N-terminal peptide that is removed before the nascent protein is released from the rough endoplasmic reticulum. The product, proalbumin, is in turn cleaved in the Golgi vesicles to produce the secreted albumin.</p> <p>Cellular Localization: Secreted</p>
Molecular Weight:	69 kDa
Gene ID:	213
UniProt:	P02768
Pathways:	Lipid Metabolism

Application Details

Application Notes:	WB: 1:500-1:100000. ICC/IF: 1:100-1:1000. IHC-P: 1:100-1:1000. IHC-Fr: 1:100-1:1000. Optimal dilutions/concentrations should be determined by the researcher. Not tested in other applications.
Comment:	Validation: Orthogonal
Restrictions:	For Research Use only

Handling

Format:	Liquid
Concentration:	0.45 mg/mL
Buffer:	1XPBS (pH 7), 1 % BSA, 20 % Glycerol, 0.025 % ProClin 300
Preservative:	ProClin
Precaution of Use:	This product contains ProClin: a POISONOUS AND HAZARDOUS SUBSTANCE which should be handled by trained staff only.

Handling

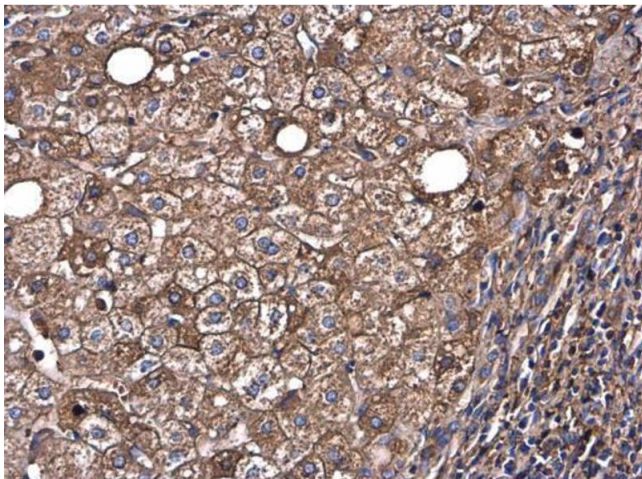
Storage: 4 °C, -20 °C

Storage Comment: Store as concentrated solution. Centrifuge briefly prior to opening vial. For short-term storage (1-2 weeks), store at 4°C. For long-term storage, aliquot and store at -20°C or below. Avoid multiple freeze-thaw cycles.

Publications

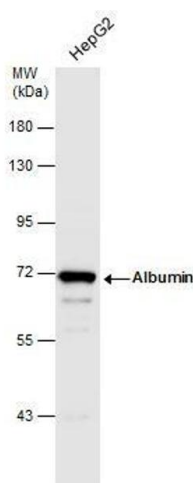
Product cited in: Wei, Ngo, Wu, Lee: "Phosphorylation of the Ndc80 complex protein, HEC1, by Nek2 kinase modulates chromosome alignment and signaling of the spindle assembly checkpoint." in: **Molecular biology of the cell**, Vol. 22, Issue 19, pp. 3584-94, (2012) ([PubMed](#)).

Images



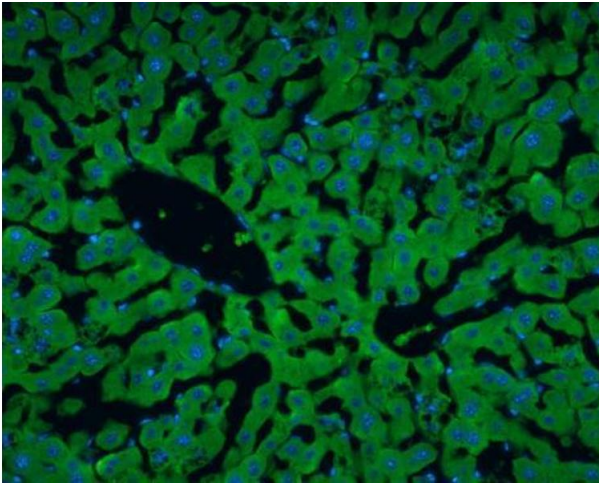
Immunohistochemistry

Image 1. IHC-P Image Albumin antibody detects Albumin protein at cytoplasm in human hepatocellular carcinoma by immunohistochemical analysis. Sample: Paraffin-embedded human hepatocellular carcinoma. Albumin antibody , diluted at 1:500.



Western Blotting

Image 2. WB Image Whole cell extract (30 µg) was separated by 7.5% SDS-PAGE, and the membrane was blotted with Albumin antibody , diluted at 1:1000.



Immunohistochemistry

Image 3. IHC-Fr Image Albumin antibody detects Albumin protein at cytoplasm in rat liver by immunohistochemical analysis. Sample: Frozen section of rat liver. Albumin antibody, diluted at 1:200.

Please check the [product details page](#) for more images. Overall 5 images are available for ABIN2855392.