

Datasheet for ABIN2855398  
**anti-RBBP5 antibody (Center)**[Go to Product page](#)

## 2 Images

## Overview

Quantity:	100 µL
Target:	RBBP5
Binding Specificity:	Center
Reactivity:	Human
Host:	Rabbit
Clonality:	Polyclonal
Conjugate:	This RBBP5 antibody is un-conjugated
Application:	Western Blotting (WB), Immunofluorescence (IF), Immunocytochemistry (ICC)

## Product Details

Immunogen:	Recombinant protein encompassing a sequence within the center region of human RBBP5. The exact sequence is proprietary.
Isotype:	IgG
Cross-Reactivity:	Mouse (Murine), Rat (Rattus), Cow (Bovine)
Cross-Reactivity (Details):	Mouse (100 %), Rat (100 %), Bovine (100 %)
Characteristics:	Rabbit Polyclonal antibody to RBBP5 (retinoblastoma binding protein 5) RBBP5 antibody [N1N3]
Purification:	Purified by antigen-affinity chromatography.

## Target Details

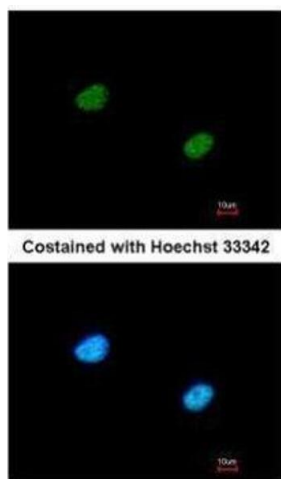
Target:	RBBP5
Alternative Name:	RBBP5 ( <a href="#">RBBP5 Products</a> )
Background:	The protein encoded by this gene is a ubiquitously expressed nuclear protein and belongs to a highly conserved subfamily of WD-repeat proteins. It is found among several proteins that bind directly to retinoblastoma protein, which regulates cell proliferation. The encoded protein interacts preferentially with the underphosphorylated retinoblastoma protein via the E1A-binding pocket B.
Molecular Weight:	59 kDa
Gene ID:	5929

## Application Details

Application Notes:	Suggested dilution Reference ICC/IF 1:100-1:1000* Western blot 1:500-1:3000* Not tested in other applications. *Optimal dilutions/concentrations should be determined by the researcher.Suggested dilutionReferenceICC/IF1:100-1:1000* Western blot1:500-1:3000*
Comment:	Positive Control: A431
Restrictions:	For Research Use only

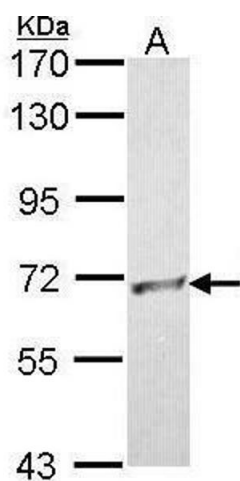
## Handling

Format:	Liquid
Concentration:	0.11 mg/mL
Buffer:	1XPBS, 10 % Glycerol ( pH 7). 0.01 % Thimerosal was added as a preservative.
Preservative:	Thimerosal (Merthiolate)
Precaution of Use:	This product contains Thimerosal (Merthiolate): a POISONOUS AND HAZARDOUS SUBSTANCE which should be handled by trained staff only.
Storage:	-20 °C
Storage Comment:	Keep as concentrated solution. Aliquot and store at -20°C or below. Avoid multiple freeze-thaw cycles.



### Immunofluorescence

**Image 1.** ICC/IF Image Immunofluorescence analysis of paraformaldehyde-fixed A431, using RBBP5, antibody at 1:200 dilution.



### Western Blotting

**Image 2.** WB Image Sample (30 ug of whole cell lysate) A: A431, 7.5% SDS PAGE antibody diluted at 1:500