



[Go to Product page](#)

Datasheet for ABIN2855401  
**anti-MAP3K14 antibody (N-Term)**

1 Image

### Overview

Quantity:	100 µL
Target:	MAP3K14
Binding Specificity:	N-Term
Reactivity:	Human
Host:	Rabbit
Clonality:	Polyclonal
Conjugate:	This MAP3K14 antibody is un-conjugated
Application:	Western Blotting (WB)

### Product Details

Immunogen:	Recombinant protein encompassing a sequence within the N-terminus region of human MAP3K14. The exact sequence is proprietary.
Isotype:	IgG
Cross-Reactivity:	Human
Characteristics:	Rabbit Polyclonal antibody to MAP3K14 (mitogen-activated protein kinase kinase kinase 14) MAP3K14 antibody [N1N2], N-term
Purification:	Purified by antigen-affinity chromatography.

### Target Details

Target:	MAP3K14
---------	---------

## Target Details

---

Alternative Name:	mitogen-activated protein kinase kinase kinase 14 ( <a href="#">MAP3K14 Products</a> )
Background:	<p>This gene encodes mitogen-activated protein kinase kinase kinase 14, which is a serine/threonine protein-kinase. This kinase binds to TRAF2 and stimulates NF-kappaB activity. It shares sequence similarity with several other MAPKK kinases. It participates in an NF-kappaB-inducing signalling cascade common to receptors of the tumour-necrosis/nerve-growth factor (TNF/NGF) family and to the interleukin-1 type-I receptor.</p> <p>Cellular Localization: Cytoplasm</p>
Molecular Weight:	104 kDa
Gene ID:	9020
UniProt:	<a href="#">Q99558</a>
Pathways:	<a href="#">NF-kappaB Signaling</a> , <a href="#">TCR Signaling</a>

## Application Details

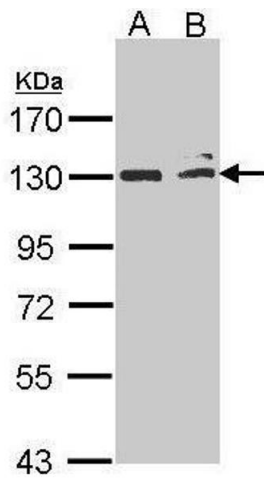
---

Application Notes:	WB: 1:500-1:3000. Optimal dilutions/concentrations should be determined by the researcher. Not tested in other applications.
Comment:	Positive Control: H1299 , HepG2
Restrictions:	For Research Use only

## Handling

---

Format:	Liquid
Concentration:	1 mg/mL
Buffer:	0.1M Tris-Glycine ( pH 7), 10 % Glycerol, 0.01 % Thimerosal
Preservative:	Thimerosal (Merthiolate)
Precaution of Use:	This product contains Thimerosal (Merthiolate): a POISONOUS AND HAZARDOUS SUBSTANCE which should be handled by trained staff only.
Storage:	4 °C,-20 °C
Storage Comment:	Store as concentrated solution. Centrifuge briefly prior to opening vial. For short-term storage (1-2 weeks), store at 4°C. For long-term storage, aliquot and store at -20°C or below. Avoid multiple freeze-thaw cycles.



### Western Blotting

**Image 1.** WB Image Sample (30 ug of whole cell lysate) A: H1299 B: Hep G2 , 7.5% SDS PAGE antibody diluted at 1:1000