

Datasheet for ABIN2855403

**anti-PYCARD antibody****3** Images[Go to Product page](#)

## Overview

Quantity:	100 µL
Target:	PYCARD
Reactivity:	Human
Host:	Rabbit
Clonality:	Polyclonal
Conjugate:	This PYCARD antibody is un-conjugated
Application:	Western Blotting (WB), Immunofluorescence (IF), Immunohistochemistry (Paraffin-embedded Sections) (IHC (p)), Immunocytochemistry (ICC), Immunohistochemistry (Frozen Sections) (IHC (fro))

## Product Details

Immunogen:	Recombinant protein encompassing a sequence within the center region of human TMS1. The exact sequence is proprietary.
Isotype:	IgG
Cross-Reactivity:	Human
Characteristics:	Rabbit Polyclonal antibody to TMS1 (PYD and CARD domain containing) TMS1 antibody [N1C3]
Purification:	Purified by antigen-affinity chromatography.

## Target Details

Target:	PYCARD
---------	--------

## Target Details

Alternative Name:	PYD and CARD domain containing ( <a href="#">PYCARD Products</a> )
Background:	<p>This gene encodes an adaptor protein that is composed of two protein-protein interaction domains: a N-terminal PYRIN-PAAD-DAPIN domain (PYD) and a C-terminal caspase-recruitment domain (CARD). The PYD and CARD domains are members of the six-helix bundle death domain-fold superfamily that mediates assembly of large signaling complexes in the inflammatory and apoptotic signaling pathways via the activation of caspase. In normal cells, this protein is localized to the cytoplasm, however, in cells undergoing apoptosis, it forms ball-like aggregates near the nuclear periphery. Two transcript variants encoding different isoforms have been found for this gene.</p> <p>Cellular Localization: Cytoplasm</p>
Molecular Weight:	22 kDa
Gene ID:	29108
UniProt:	<a href="#">Q9ULZ3</a>
Pathways:	<a href="#">Activation of Innate immune Response</a> , <a href="#">Cellular Response to Molecule of Bacterial Origin</a> , <a href="#">Regulation of Actin Filament Polymerization</a> , <a href="#">Positive Regulation of Endopeptidase Activity</a> , <a href="#">Activated T Cell Proliferation</a> , <a href="#">Inflammasome</a>

## Application Details

Application Notes:	WB: 1:500-1:3000. ICC/IF: 1:100-1:1000. Optimal dilutions/concentrations should be determined by the researcher. Not tested in other applications.
Comment:	Positive Control: THP-1 , DDDDK-tagged PYCARD-transfected 293T Validation: Overexpression
Restrictions:	For Research Use only

## Handling

Format:	Liquid
Concentration:	1 mg/mL
Buffer:	1XPBS ( pH 7), 1 % BSA, 20 % Glycerol, 0.01 % Thimerosal
Preservative:	Thimerosal (Merthiolate)
Precaution of Use:	This product contains Thimerosal (Merthiolate): a POISONOUS AND HAZARDOUS SUBSTANCE

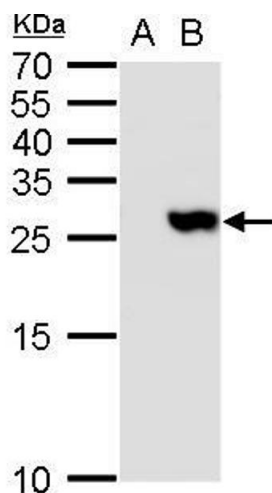
## Handling

which should be handled by trained staff only.

Storage: 4 °C,-20 °C

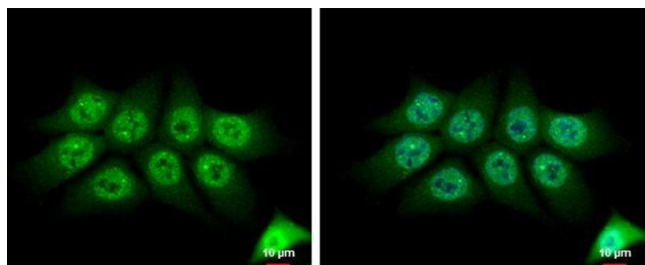
Storage Comment: Store as concentrated solution. Centrifuge briefly prior to opening vial. For short-term storage (1-2 weeks), store at 4°C. For long-term storage, aliquot and store at -20°C or below. Avoid multiple freeze-thaw cycles.

## Images



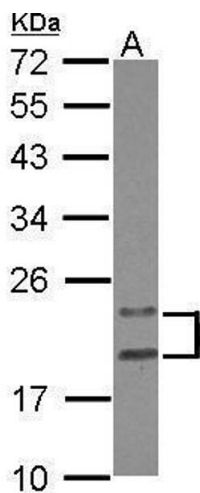
### Western Blotting

**Image 1.** WB Image TMS1 antibody detects TMS1 protein by western blot analysis. A. 30 µg 293T whole cell lysate/extract B. 30 µg whole cell lysate/extract of 3xFlag-human TMS1-transfected 293T cells 12 % SDS-PAGE TMS1 antibody , dilution: 1:20000



### Immunofluorescence

**Image 2.** ICC/IF Image TMS1 antibody [N1C3] detects TMS1 protein at cytoplasm and nucleus by immunofluorescent analysis. Sample: HCT 116 cells were fixed in 2% paraformaldehyde/culture medium at 37oC for 30 min. Green: TMS1 protein stained by TMS1 antibody [N1C3] , diluted at 1:500. Blue: Hoechst 33342 staining. Scale bar = 10 µm.



Western Blotting

**Image 3.** WB Image Sample (30 ug of whole cell lysate) A:  
HeLa 12% SDS PAGE antibody diluted at 1:1000