



[Go to Product page](#)

Datasheet for ABIN2855404
anti-NME5 antibody (Center)

2 Images

Overview

Quantity:	100 µL
Target:	NME5
Binding Specificity:	Center
Reactivity:	Human, Mouse
Host:	Rabbit
Clonality:	Polyclonal
Conjugate:	This NME5 antibody is un-conjugated
Application:	Western Blotting (WB)

Product Details

Immunogen:	Recombinant protein encompassing a sequence within the center region of human NME5. The exact sequence is proprietary.
Isotype:	IgG
Cross-Reactivity:	Cow (Bovine)
Cross-Reactivity (Details):	Bovine (88 %)
Characteristics:	Rabbit polyclonal antibody to NME5 (non-metastatic cells 5, protein expressed in (nucleoside-diphosphate kinase)) NME5 antibody [N1C3]
Purification:	Purified by antigen-affinity chromatography.

Target Details

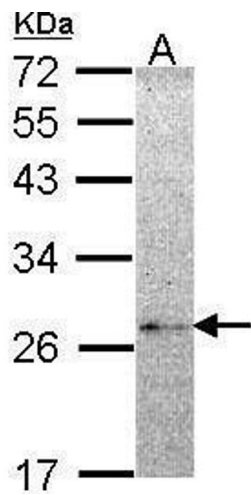
Target:	NME5
Alternative Name:	NME5 (NME5 Products)
Background:	Does not seem to have NDK kinase activity. Confers protection from cell death by Bax and alters the cellular levels of several antioxidant enzymes including Gpx5. May play a role in spermiogenesis by increasing the ability of late-stage spermatids to eliminate reactive oxygen species.
Molecular Weight:	24 kDa
Gene ID:	8382
Pathways:	Nucleotide Phosphorylation , Ribonucleoside Biosynthetic Process , Negative Regulation of intrinsic apoptotic Signaling

Application Details

Application Notes:	Suggested dilution Reference Western blot 1:500-1:3000* Not tested in other applications. *Optimal dilutions/concentrations should be determined by the researcher.Suggested dilutionReferenceWestern blot1:500-1:3000*
Comment:	Positive Control: A431 , HeLa , NIH-3T3
Restrictions:	For Research Use only

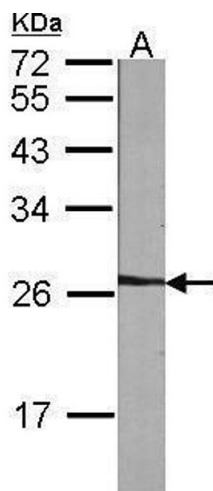
Handling

Format:	Liquid
Concentration:	0.22 mg/mL
Buffer:	0.1M Tris, 0.1M Glycine, 10 % Glycerol (pH 7). 0.01 % Thimerosal was added as a preservative.
Preservative:	Thimerosal (Merthiolate)
Precaution of Use:	This product contains Thimerosal (Merthiolate): a POISONOUS AND HAZARDOUS SUBSTANCE which should be handled by trained staff only.
Storage:	-20 °C
Storage Comment:	Keep as concentrated solution. Aliquot and store at -20°C or below. Avoid multiple freeze-thaw cycles.



Western Blotting

Image 1. WB Image Sample (30 ug of whole cell lysate) A: HeLa 12% SDS PAGE NME5 antibody antibody diluted at 1:1000



Western Blotting

Image 2. WB Image Sample (30 ug of whole cell lysate) A: NIH-3T3 12% SDS PAGE antibody diluted at 1:1000