



Datasheet for ABIN2855405  
**anti-ING1 antibody (C-Term)**



[Go to Product page](#)

1 Image

Overview

Quantity:	100 µL
Target:	ING1
Binding Specificity:	C-Term
Reactivity:	Human
Host:	Rabbit
Clonality:	Polyclonal
Conjugate:	This ING1 antibody is un-conjugated
Application:	Western Blotting (WB)

Product Details

Immunogen:	Carrier-protein conjugated synthetic peptide encompassing a sequence within the C-terminus region of human ING1. The exact sequence is proprietary.
Isotype:	IgG
Cross-Reactivity:	Human
Characteristics:	Rabbit Polyclonal antibody to ING1 (inhibitor of growth family, member 1) ING1 antibody [C1C3]
Purification:	Purified by antigen-affinity chromatography.

Target Details

Target:	ING1
---------	------

## Target Details

---

Alternative Name:	inhibitor of growth family member 1 ( <a href="#">ING1 Products</a> )
Background:	<p>This gene encodes a tumor suppressor protein that can induce cell growth arrest and apoptosis. The encoded protein is a nuclear protein that physically interacts with the tumor suppressor protein TP53 and is a component of the p53 signaling pathway. Reduced expression and rearrangement of this gene have been detected in various cancers. Multiple alternatively spliced transcript variants encoding distinct isoforms have been reported.</p> <p>Cellular Localization: Nucleus</p>
Molecular Weight:	47 kDa
Gene ID:	3621
UniProt:	<a href="#">Q9UK53</a>
Pathways:	<a href="#">Protein targeting to Nucleus</a> , <a href="#">Autophagy</a>

## Application Details

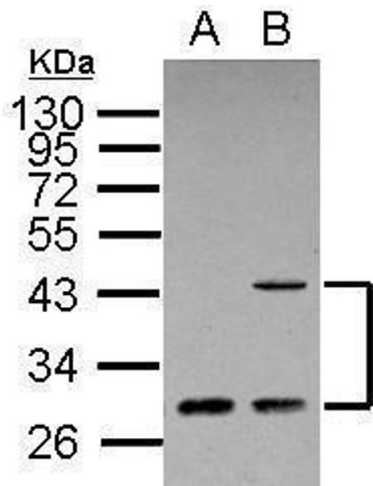
---

Application Notes:	WB: 1:500-1:3000. Optimal dilutions/concentrations should be determined by the researcher. Not tested in other applications.
Comment:	Positive Control: A431 , HeLa
Restrictions:	For Research Use only

## Handling

---

Format:	Liquid
Concentration:	1 mg/mL
Buffer:	1XPBS ( pH 7), 40 % Glycerol, 0.01 % Thimerosal
Preservative:	Thimerosal (Merthiolate)
Precaution of Use:	This product contains Thimerosal (Merthiolate): a POISONOUS AND HAZARDOUS SUBSTANCE which should be handled by trained staff only.
Storage:	4 °C,-20 °C
Storage Comment:	Store as concentrated solution. Centrifuge briefly prior to opening vial. For short-term storage (1-2 weeks), store at 4°C. For long-term storage, aliquot and store at -20°C or below. Avoid multiple freeze-thaw cycles.



### Western Blotting

**Image 1.** WB Image Sample (30 ug of whole cell lysate) A: A431 B: HeLa 12% SDS PAGE antibody diluted at 1:500