

Datasheet for ABIN2855412
anti-DVL3 antibody (N-Term)

3 Images

1 Publication

[Go to Product page](#)

Overview

Quantity:	100 µL
Target:	DVL3
Binding Specificity:	N-Term
Reactivity:	Human, Mouse
Host:	Rabbit
Clonality:	Polyclonal
Conjugate:	This DVL3 antibody is un-conjugated
Application:	Western Blotting (WB), Immunohistochemistry (IHC), Immunofluorescence (IF), Immunohistochemistry (Paraffin-embedded Sections) (IHC (p)), Immunocytochemistry (ICC)

Product Details

Immunogen:	Recombinant protein encompassing a sequence within the N-terminus region of human Dishevelled 3. The exact sequence is proprietary.
Isotype:	IgG
Cross-Reactivity:	Xenopus tropicalis
Cross-Reactivity (Details):	Xenopus tropicalis (81 %)
Characteristics:	Rabbit Polyclonal antibody to Dishevelled 3 (dishevelled, dsh homolog 3 (Drosophila)) Dishevelled 3 antibody [N1N2], N-term
Purification:	Purified by antigen-affinity chromatography.

Target Details

Target:	DVL3
Alternative Name:	Dishevelled 3 (DVL3 Products)
Background:	<p>This gene is a member of a multi-gene family which shares strong similarity with the Drosophila dishevelled gene, dsh. The Drosophila dishevelled gene encodes a cytoplasmic phosphoprotein that regulates cell proliferation.</p> <p>Cellular Localization: Cytoplasm</p>
Molecular Weight:	78 kDa
Gene ID:	1857

Application Details

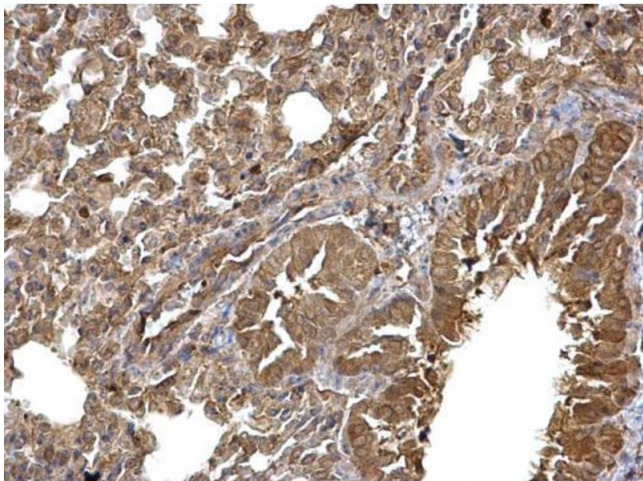
Application Notes:	<p>Suggested dilution Reference ICC/IF 1:100-1:1000* Immunohistochemistry Assay-dependent dilution IHC (Formalin-fixed paraffin-embedded sections) 1:100-1:1000* Western blot 1:5000-1:20000* Not tested in other applications. *Optimal dilutions/concentrations should be determined by the researcher.Suggested dilutionReferenceICC/IF1:100-1:1000* Immunohistochemistry Assay-dependent dilution IHC (Formalin-fixed paraffin-embedded sections)1:100-1:1000* Western blot1:5000-1:20000*</p>
Comment:	Positive Control: HCT116
Restrictions:	For Research Use only

Handling

Format:	Liquid
Concentration:	0.99 mg/mL
Buffer:	0.1M Tris, 0.1M Glycine, 10 % Glycerol (pH 7). 0.01 % Thimerosal was added as a preservative.
Preservative:	Thimerosal (Merthiolate)
Precaution of Use:	This product contains Thimerosal (Merthiolate): a POISONOUS AND HAZARDOUS SUBSTANCE which should be handled by trained staff only.
Storage:	-20 °C
Storage Comment:	Keep as concentrated solution. Aliquot and store at -20°C or below. Avoid multiple freeze-thaw cycles.

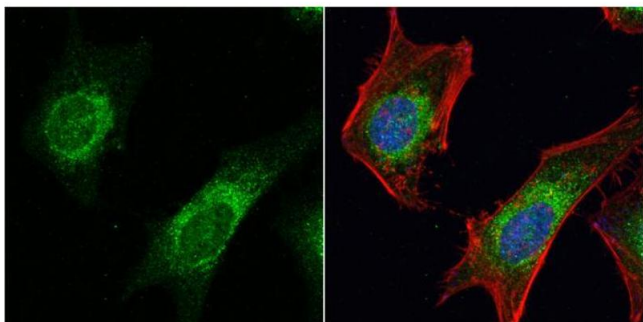
Product cited in: Rodriguez-Gil, Hu, Greer: "Dishevelled proteins are associated with olfactory sensory neuron presynaptic terminals." in: **PLoS ONE**, Vol. 8, Issue 2, pp. e56561, (2013) ([PubMed](#)).

Images



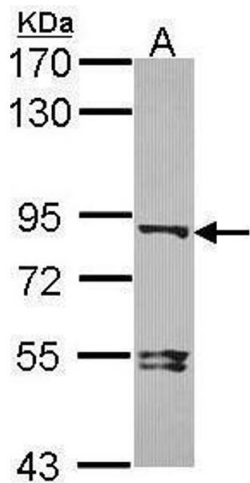
Immunohistochemistry

Image 1. IHC-P Image Dishevelled 3 antibody [N1N2], N-term detects Dishevelled 3 protein at cytoplasm on mouse lung by immunohistochemical analysis. Sample: Paraffin-embedded mouse lung. Dishevelled 3 antibody [N1N2], N-term , diluted at 1:500.



Immunofluorescence

Image 2. ICC/IF Image Dishevelled 3 antibody [N1N2], N-term detects Dishevelled 3 protein at cytoplasm by immunofluorescent analysis. Sample: HeLa cells were fixed in 4% paraformaldehyde at RT for 15 min. Green: Dishevelled 3 protein stained by Dishevelled 3 antibody [N1N2], N-term , diluted at 1:500. Red: phalloidin, a cytoskeleton marker, stained by phalloidin (invitrogen, A12380) diluted at 1:200. Blue: Hoechst 33342 staining.



Western Blotting

Image 3. WB Image Sample (30 ug of whole cell lysate) A: HCT116 7.5% SDS PAGE antibody diluted at 1:10000