

Datasheet for ABIN2855413

**anti-GABBR1 antibody**

## 4 Images

[Go to Product page](#)

## Overview

Quantity:	100 µL
Target:	GABBR1
Reactivity:	Human
Host:	Rabbit
Clonality:	Polyclonal
Conjugate:	This GABBR1 antibody is un-conjugated
Application:	Western Blotting (WB), Immunofluorescence (IF), Immunocytochemistry (ICC), Immunohistochemistry (Paraffin-embedded Sections) (IHC (p))

## Product Details

Immunogen:	Recombinant protein encompassing a sequence within the center region of human GABA B Receptor 1. The exact sequence is proprietary.
Isotype:	IgG
Cross-Reactivity:	Human, Mouse, Rat
Characteristics:	Rabbit Polyclonal antibody to GABA B Receptor 1 (gamma-aminobutyric acid (GABA) B receptor, 1) GABA B Receptor 1 antibody [N2C1], Internal
Purification:	Purified by antigen-affinity chromatography.

## Target Details

Target:	GABBR1
---------	--------

## Target Details

Alternative Name:	gamma-aminobutyric acid type B receptor subunit 1 ( <a href="#">GABBR1 Products</a> )
Background:	<p>Gamma-aminobutyric acid (GABA) is the main inhibitory neurotransmitter in the mammalian central nervous system. GABA exerts its effects through ionotropic [GABA(A/C)] receptors, to produce fast synaptic inhibition, and metabotropic [GABA(B)] receptors, to produce slow, prolonged inhibitory signals. The GABA(B) receptor consists of a heterodimer of two related 7-transmembrane receptors, GABA(B) receptor 1 and GABA(B) receptor 2. The GABA(B) receptor 1 gene is mapped to chromosome 6p21.3 within the HLA class I region close to the HLA-F gene. Susceptibility loci for multiple sclerosis, epilepsy, and schizophrenia have also been mapped in this region. Alternative splicing of this gene generates 4 transcript variants.</p> <p>Cellular Localization: Cell membrane, Multi-pass membrane protein , Cell junction , synapse , postsynaptic cell membrane, Multi-pass membrane protein , Isoform 1E: Secreted</p>
Molecular Weight:	108 kDa
Gene ID:	2550
UniProt:	<a href="#">Q9UBS5</a>
Pathways:	<a href="#">Positive Regulation of Peptide Hormone Secretion</a> , <a href="#">cAMP Metabolic Process</a>

## Application Details

Application Notes:	WB: 1:500-1:3000. ICC/IF: 1:100-1:1000. IHC-P: 1:100-1:1000. Optimal dilutions/concentrations should be determined by the researcher. Not tested in other applications.
Comment:	Positive Control: PC-3 , U87-MG , SK-N-SH , C8D30
Restrictions:	For Research Use only

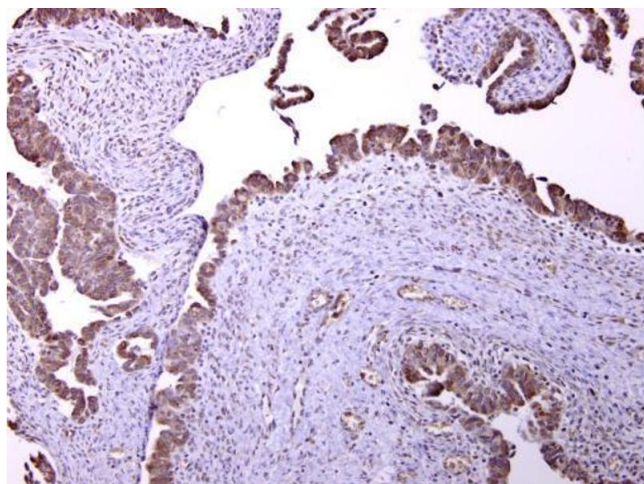
## Handling

Format:	Liquid
Concentration:	0.43 mg/mL
Buffer:	0.1M Tris-Glycine ( pH 7), 10 % Glycerol, 0.01 % Thimerosal
Preservative:	Thimerosal (Merthiolate)
Precaution of Use:	This product contains Thimerosal (Merthiolate): a POISONOUS AND HAZARDOUS SUBSTANCE which should be handled by trained staff only.
Storage:	4 °C, -20 °C

## Handling

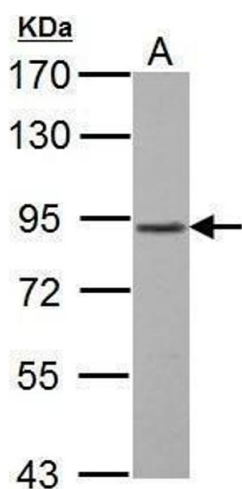
**Storage Comment:** Store as concentrated solution. Centrifuge briefly prior to opening vial. For short-term storage (1-2 weeks), store at 4°C. For long-term storage, aliquot and store at -20°C or below. Avoid multiple freeze-thaw cycles.

## Images



### Immunohistochemistry

**Image 1.** IHC-P Image GABA B Receptor 1 antibody [N2C1], Internal detects GABA B Receptor 1 protein at cytosol on human ovarian carcinoma by immunohistochemical analysis. Sample: Paraffin-embedded human ovarian carcinoma. GABA B Receptor 1 antibody [N2C1], Internal , dilution: 1:250.



### Western Blotting

**Image 2.** WB Image GABA B Receptor 1 antibody [N2C1], Internal detects GABBR1 protein by Western blot analysis. A. 30 µg C8D30 whole cell lysate/extract 7.5 % SDS-PAGE GABA B Receptor 1 antibody [N2C1], Internal , dilution: 1:500



### Immunohistochemistry

**Image 3.** IHC-P Image GABA B Receptor 1 antibody [N2C1], Internal detects GABA B Receptor 1 protein at cytosol on human brain by immunohistochemical analysis. Sample: Paraffin-embedded human brain. GABA B Receptor 1 antibody [N2C1], Internal , dilution: 1:250.

Please check the [product details page](#) for more images. Overall 4 images are available for ABIN2855413.