



Datasheet for ABIN2855417  
**anti-NTRK3 antibody (Internal Region)**



[Go to Product page](#)

2 Images

Overview

Quantity:	100 µL
Target:	NTRK3
Binding Specificity:	Internal Region
Reactivity:	Human, Mouse
Host:	Rabbit
Clonality:	Polyclonal
Conjugate:	This NTRK3 antibody is un-conjugated
Application:	Western Blotting (WB)

Product Details

Immunogen:	Recombinant protein encompassing a sequence within the center region of human TrkC. The exact sequence is proprietary.
Isotype:	IgG
Cross-Reactivity:	Rhesus Monkey
Cross-Reactivity (Details):	Rhesus Monkey (100 %)
Characteristics:	Rabbit polyclonal antibody to TrkC (neurotrophic tyrosine kinase, receptor, type 3) TrkC antibody [N2C1], Internal
Purification:	Purified by antigen-affinity chromatography.

## Target Details

Target:	NTRK3
Alternative Name:	TrkC ( <a href="#">NTRK3 Products</a> )
Background:	<p>This gene encodes a member of the neurotrophic tyrosine receptor kinase (NTRK) family. This kinase is a membrane-bound receptor that, upon neurotrophin binding, phosphorylates itself and members of the MAPK pathway. Signalling through this kinase leads to cell differentiation and may play a role in the development of proprioceptive neurons that sense body position. Mutations in this gene have been associated with medulloblastomas, secretory breast carcinomas and other cancers.</p> <p>Cellular Localization: Membrane, Single-pass type I membrane protein</p>
Molecular Weight:	94 kDa
Gene ID:	4916
Pathways:	<a href="#">RTK Signaling</a> , <a href="#">Neurotrophin Signaling Pathway</a> , <a href="#">Regulation of Cell Size</a>

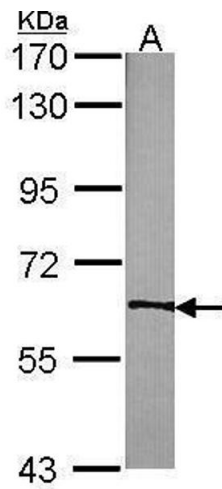
## Application Details

Application Notes:	<p>Suggested dilution Reference Western blot 1:500-1:3000* Not tested in other applications.</p> <p>*Optimal dilutions/concentrations should be determined by the researcher.Suggested dilutionReferenceWestern blot1:500-1:3000*</p>
Comment:	Positive Control: 293T , A431 , H1299 , HeLaS3 , Molt-4 , Raji , NIH-3T3
Restrictions:	For Research Use only

## Handling

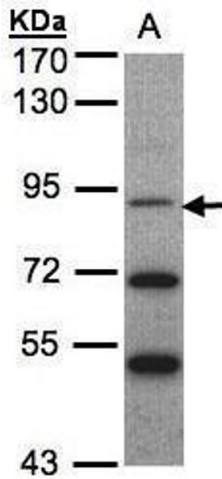
Format:	Liquid
Concentration:	1 mg/mL
Buffer:	0.1M Tris, 0.1M Glycine, 10 % Glycerol ( pH 7). 0.01 % Thimerosal was added as a preservative.
Preservative:	Thimerosal (Merthiolate)
Precaution of Use:	This product contains Thimerosal (Merthiolate): a POISONOUS AND HAZARDOUS SUBSTANCE which should be handled by trained staff only.
Storage:	-20 °C
Storage Comment:	Keep as concentrated solution. Aliquot and store at -20°C or below. Avoid multiple freeze-thaw

cycles.



**Western Blotting**

**Image 1.** WB Image Sample (30 ug of whole cell lysate)  
A:NIH-3T3 7.5% SDS PAGE antibody diluted at 1:1000



**Western Blotting**

**Image 2.** WB Image Sample(30 ug whole cell lysate)  
A:MOLT4 , 7.5% SDS PAGE antibody diluted at 1:1000