

Datasheet for ABIN2855424  
**anti-ZNF143 antibody (C-Term)**[Go to Product page](#)

## 2 Images

## Overview

Quantity:	100 µL
Target:	ZNF143
Binding Specificity:	C-Term
Reactivity:	Human
Host:	Rabbit
Clonality:	Polyclonal
Conjugate:	This ZNF143 antibody is un-conjugated
Application:	Western Blotting (WB), Immunofluorescence (IF), Immunocytochemistry (ICC)

## Product Details

Immunogen:	Recombinant protein encompassing a sequence within the C-terminus region of human ZNF143. The exact sequence is proprietary.
Isotype:	IgG
Cross-Reactivity:	Human
Characteristics:	Rabbit Polyclonal antibody to ZNF143 (zinc finger protein 143) ZNF143 antibody
Purification:	Purified by antigen-affinity chromatography.

## Target Details

Target:	ZNF143
---------	--------

## Target Details

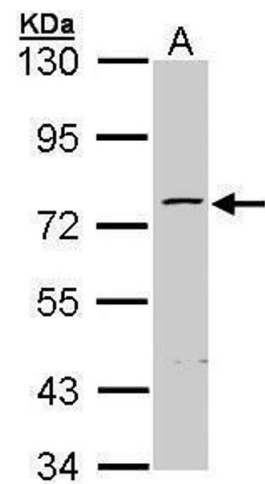
Alternative Name:	zinc finger protein 143 ( <a href="#">ZNF143 Products</a> )
Background:	Transcriptional activator. Activates the gene for selenocysteine tRNA (tRNA <sup>sec</sup> ). Binds to the SPH motif of small nuclear RNA (snRNA) gene promoters. Participates to efficient U6 RNA polymerase III transcription via its interaction with CHD8.  Cellular Localization: Nucleus
Molecular Weight:	69 kDa
Gene ID:	7702
UniProt:	<a href="#">P52747</a>

## Application Details

Application Notes:	WB: 1:500-1:3000. ICC/IF: 1:100-1:1000. Optimal dilutions/concentrations should be determined by the researcher. Not tested in other applications.
Comment:	Positive Control: HepG2
Restrictions:	For Research Use only

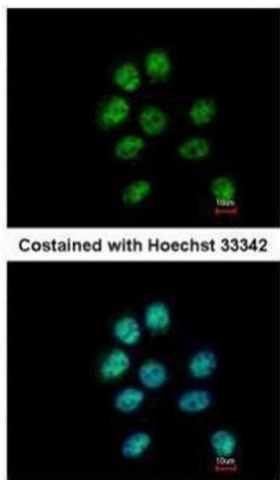
## Handling

Format:	Liquid
Concentration:	0.83 mg/mL
Buffer:	0.1M Tris-Glycine ( pH 7), 10 % Glycerol, 0.01 % Thimerosal
Preservative:	Thimerosal (Merthiolate)
Precaution of Use:	This product contains Thimerosal (Merthiolate): a POISONOUS AND HAZARDOUS SUBSTANCE which should be handled by trained staff only.
Storage:	4 °C,-20 °C
Storage Comment:	Store as concentrated solution. Centrifuge briefly prior to opening vial. For short-term storage (1-2 weeks), store at 4°C. For long-term storage, aliquot and store at -20°C or below. Avoid multiple freeze-thaw cycles.



#### Western Blotting

**Image 1.** WB Image Sample (30 ug of whole cell lysate) A: Hep G2 , 7.5% SDS PAGE antibody diluted at 1:1000



#### Immunofluorescence

**Image 2.** ICC/IF Image Immunofluorescence analysis of paraformaldehyde-fixed A431, using ZNF143, antibody at 1:500 dilution.