



[Go to Product page](#)

Datasheet for ABIN2855427

anti-GABPA antibody (Internal Region)

3 Images

Overview

Quantity:	100 µL
Target:	GABPA
Binding Specificity:	Internal Region
Reactivity:	Human
Host:	Rabbit
Clonality:	Polyclonal
Conjugate:	This GABPA antibody is un-conjugated
Application:	Western Blotting (WB), Immunofluorescence (IF), Immunoprecipitation (IP), Immunocytochemistry (ICC)

Product Details

Immunogen:	Recombinant protein encompassing a sequence within the center region of human GABPA. The exact sequence is proprietary.
Isotype:	IgG
Cross-Reactivity:	Rhesus Monkey
Cross-Reactivity (Details):	Rhesus Monkey (100 %)
Characteristics:	Rabbit Polyclonal antibody to GABPA (GA binding protein transcription factor, alpha subunit 60 kDa) GABPA antibody [N2C2], Internal
Purification:	Purified by antigen-affinity chromatography.

Target Details

Target:	GABPA
Alternative Name:	GABPA (GABPA Products)
Background:	<p>This gene encodes one of three GA-binding protein transcription factor subunits which functions as a DNA-binding subunit. Since this subunit shares identity with a subunit encoding the nuclear respiratory factor 2 gene, it is likely involved in activation of cytochrome oxidase expression and nuclear control of mitochondrial function. This subunit also shares identity with a subunit constituting the transcription factor E4TF1, responsible for expression of the adenovirus E4 gene. Because of its chromosomal localization and ability to form heterodimers with other polypeptides, this gene may play a role in the Down Syndrome phenotype.</p> <p>Cellular Localization: Nucleus</p>
Molecular Weight:	51 kDa
Gene ID:	2551
Pathways:	Myometrial Relaxation and Contraction

Application Details

Application Notes:	<p>Suggested dilution Reference ICC/IF 1:100-1:1000* Immunoprecipitation 1:100-1:500* Western blot 1:500-1:3000* Not tested in other applications. *Optimal dilutions/concentrations should be determined by the researcher.Suggested dilutionReferenceICC/IF1:100-1:1000* Immunoprecipitation1:100-1:500* Western blot1:500-1:3000*</p>
Comment:	Positive Control: 293T , A431 , HeLa , HepG2
Restrictions:	For Research Use only

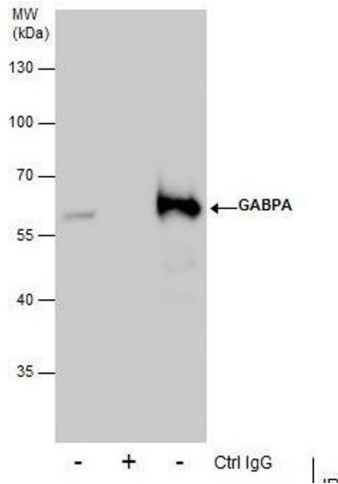
Handling

Format:	Liquid
Concentration:	0.62 mg/mL
Buffer:	1XPBS, 20 % Glycerol (pH 7). 0.025 % ProClin 300 was added as a preservative.
Preservative:	ProClin
Precaution of Use:	This product contains ProClin: a POISONOUS AND HAZARDOUS SUBSTANCE which should be handled by trained staff only.
Storage:	-20 °C

Handling

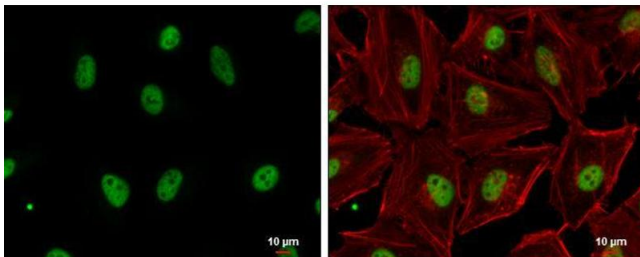
Storage Comment: Keep as concentrated solution. Aliquot and store at -20°C or below. Avoid multiple freeze-thaw cycles.

Images



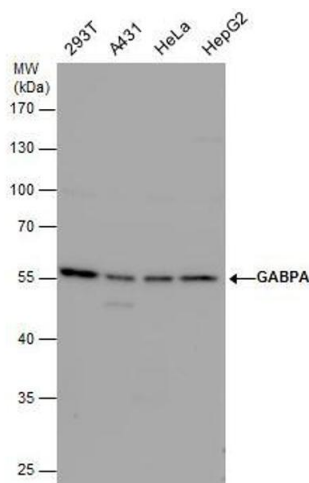
Immunoprecipitation

Image 1. IP Image Immunoprecipitation of GABPA protein from 293T whole cell extracts using 5 μg of GABPA antibody [N2C2], Internal, Western blot analysis was performed using GABPA antibody [N2C2], Internal, EasyBlot anti-Rabbit IgG was used as a secondary reagent.



Immunofluorescence

Image 2. ICC/IF Image GABPA antibody [N2C2], Internal detects GABPA protein at nucleus by immunofluorescent analysis. Sample: HeLa cells were fixed in 4% paraformaldehyde at RT for 15 min. Green: GABPA protein stained by GABPA antibody [N2C2], Internal, diluted at 1:1000. Red: phalloidin, a cytoskeleton marker, diluted at 1:200. Blue: Hoechst 33342 staining. Scale bar = 10 μm.



Western Blotting

Image 3. WB Image GABPA antibody detects GABPA protein by western blot analysis. Various whole cell extracts (30 μg) were separated by 10% SDS-PAGE, and the membrane was blotted with GABPA antibody, diluted at a dilution of 1:1000.