



[Go to Product page](#)

Datasheet for ABIN2855429

anti-GRP78 antibody (Internal Region)

9 Images

2 Publications

Overview

Quantity:	100 µL
Target:	GRP78 (HSPA5)
Binding Specificity:	Internal Region
Reactivity:	Human, Rat, Mouse
Host:	Rabbit
Clonality:	Polyclonal
Conjugate:	This GRP78 antibody is un-conjugated
Application:	Western Blotting (WB), Immunofluorescence (IF), Immunocytochemistry (ICC), Immunoprecipitation (IP), Immunohistochemistry (Paraffin-embedded Sections) (IHC (p))

Product Details

Immunogen:	Recombinant protein encompassing a sequence within the center region of human Grp78. The exact sequence is proprietary.
Isotype:	IgG
Cross-Reactivity:	Chicken, Cow (Bovine), Rhesus Monkey
Cross-Reactivity (Details):	Mouse (100 %), Rat (100 %), Chicken (100 %), Rhesus Monkey (100 %), Bovine (100 %)
Characteristics:	Rabbit polyclonal antibody to Grp78 (heat shock 70 kDa protein 5 (glucose-regulated protein, 78 kDa)) Grp78 antibody [N2C1], Internal
Purification:	Purified by antigen-affinity chromatography.

Target Details

Target:	GRP78 (HSPA5)
Alternative Name:	Grp78 (HSPA5 Products)
Background:	<p>When Chinese hamster K12 cells are starved of glucose, the synthesis of several proteins, called glucose-regulated proteins (GRPs), is markedly increased. Hendershot et al. (1994) [PubMed 8020977] pointed out that one of these, GRP78 (HSPA5), also referred to as 'immunoglobulin heavy chain-binding protein' (BiP), is a member of the heat-shock protein-70 (HSP70) family and is involved in the folding and assembly of proteins in the endoplasmic reticulum (ER). Because so many ER proteins interact transiently with GRP78, it may play a key role in monitoring protein transport through the cell.[supplied by OMIM]</p> <p>Cellular Localization: Endoplasmic reticulum lumen , Melanosome</p>
Molecular Weight:	72 kDa
Gene ID:	3309
Pathways:	Thyroid Hormone Synthesis , ER-Nucleus Signaling

Application Details

Application Notes:	<p>Suggested dilution Reference ICC/IF 1:100-1:1000* IHC (Formalin-fixed paraffin-embedded sections) 1:100-1:1000* Immunoprecipitation 1:100-1:500* Western blot 1:1000-1:10000* Not tested in other applications. *Optimal dilutions/concentrations should be determined by the researcher.Suggested dilutionReferenceICC/IF1:100-1:1000* IHC (Formalin-fixed paraffin-embedded sections)1:100-1:1000* Immunoprecipitation1:100-1:500* Western blot1:1000-1:10000*</p>
Comment:	Positive Control: 293T , A431 , HeLa , HepG2 , Neuro 2A , C8D30 , NIH-3T3 , Raw264.7 , C2C12 , PC-12 , Rat2
Restrictions:	For Research Use only

Handling

Format:	Liquid
Concentration:	0.72 mg/mL
Buffer:	1XPBS, 20 % Glycerol (pH 7). 0.01 % Thimerosal was added as a preservative.
Preservative:	Thimerosal (Merthiolate)

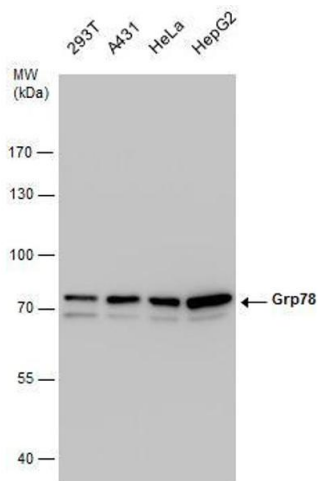
Handling

Precaution of Use:	This product contains Thimerosal (Merthiolate): a POISONOUS AND HAZARDOUS SUBSTANCE which should be handled by trained staff only.
Storage:	-20 °C
Storage Comment:	Keep as concentrated solution. Aliquot and store at -20°C or below. Avoid multiple freeze-thaw cycles.

Publications

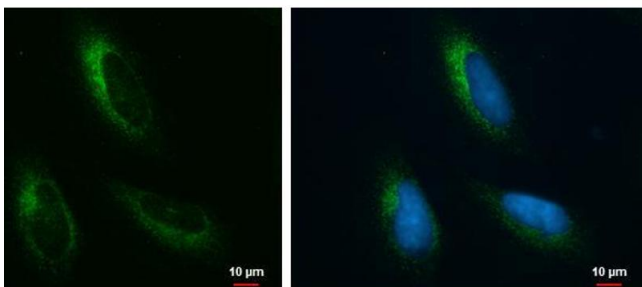
Product cited in:	Qi, Liu, Zhang, Guo: "Platelets induce increased estrogen production through NF- κ B and TGF- β 1 signaling pathways in endometriotic stromal cells." in: Scientific reports , Vol. 10, Issue 1, pp. 1281, (2020) (PubMed).
-------------------	---

Images



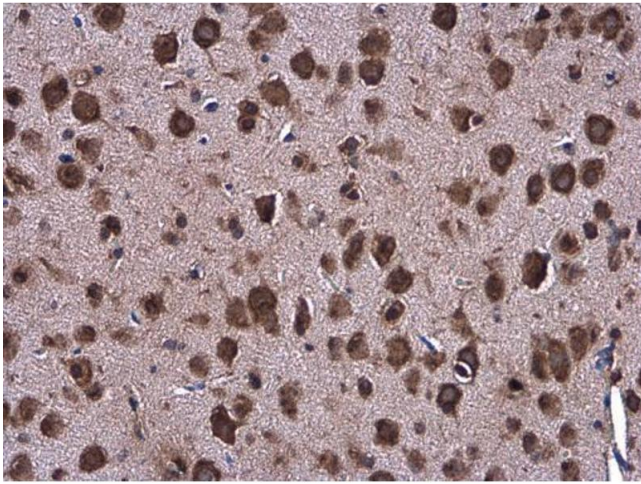
Western Blotting

Image 1. WB Image Grp78 antibody detects Grp78 protein by western blot analysis. Various whole cell extracts (30 μ g) were separated by 7.5% SDS-PAGE, and the membrane was blotted with Grp78 antibody, diluted at a dilution of 1:5000.



Immunofluorescence

Image 2. ICC/IF Image Grp78 antibody [N2C1], Internal detects Grp78 protein at endoplasmic reticulum by immunofluorescent analysis. Sample: HeLa cells were fixed in ice-cold MeOH for 5 min. Green: Grp78 protein stained by Grp78 antibody [N2C1], Internal, diluted at 1:500. Blue: Hoechst 33342 staining.



Immunohistochemistry

Image 3. IHC-P Image Grp78 antibody [N2C1], Internal detects Grp78 protein at cytoplasm in mouse brain by immunohistochemical analysis. Sample: Paraffin-embedded mouse brain. Grp78 antibody [N2C1], Internal , diluted at 1:500.

Please check the [product details page](#) for more images. Overall 9 images are available for ABIN2855429.