

Datasheet for ABIN2855430
anti-CTBP2 antibody (C-Term)

2 Images

[Go to Product page](#)

Overview

Quantity:	100 µL
Target:	CTBP2
Binding Specificity:	C-Term
Reactivity:	Human
Host:	Rabbit
Clonality:	Polyclonal
Conjugate:	This CTBP2 antibody is un-conjugated
Application:	Western Blotting (WB), Immunofluorescence (IF), Immunocytochemistry (ICC)

Product Details

Immunogen:	Recombinant protein encompassing a sequence within the C-terminus region of human CtBP2. The exact sequence is proprietary.
Isotype:	IgG
Cross-Reactivity:	Mouse (Murine)
Cross-Reactivity (Details):	Mouse (100 %)
Characteristics:	Rabbit Polyclonal antibody to CtBP2 (C-terminal binding protein 2) CtBP2 antibody
Purification:	Purified by antigen-affinity chromatography.

Target Details

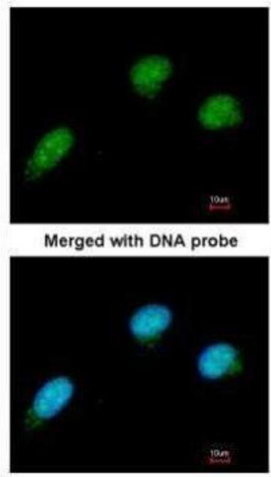
Target:	CTBP2
Alternative Name:	CtBP2 (CTBP2 Products)
Background:	<p>This gene produces alternative transcripts encoding two distinct proteins. One protein is a transcriptional repressor, while the other isoform is a major component of specialized synapses known as synaptic ribbons. Both proteins contain a NAD⁺ binding domain similar to NAD⁺-dependent 2-hydroxyacid dehydrogenases. A portion of the 3' untranslated region was used to map this gene to chromosome 21q21.3, however, it was noted that similar loci elsewhere in the genome are likely. Blast analysis shows that this gene is present on chromosome 10.</p> <p>Cellular Localization: Nucleus , Cell junction , synapse</p>
Molecular Weight:	49 kDa
Gene ID:	1488

Application Details

Application Notes:	Suggested dilution Reference ICC/IF 1:100-1:1000* Western blot 1:500-1:3000* Not tested in other applications. *Optimal dilutions/concentrations should be determined by the researcher.Suggested dilutionReferenceICC/IF1:100-1:1000* Western blot1:500-1:3000*
Comment:	Positive Control: A375
Restrictions:	For Research Use only

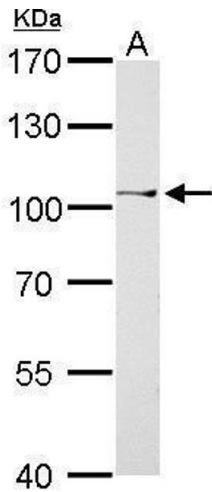
Handling

Format:	Liquid
Concentration:	0.33 mg/mL
Buffer:	0.1M Tris, 0.1M Glycine, 10 % Glycerol (pH 7). 0.01 % Thimerosal was added as a preservative.
Preservative:	Thimerosal (Merthiolate)
Precaution of Use:	This product contains Thimerosal (Merthiolate): a POISONOUS AND HAZARDOUS SUBSTANCE which should be handled by trained staff only.
Storage:	-20 °C
Storage Comment:	Keep as concentrated solution. Aliquot and store at -20°C or below. Avoid multiple freeze-thaw cycles.



Immunofluorescence

Image 1. ICC/IF Image Immunofluorescence analysis of paraformaldehyde-fixed HeLa, using CTBP2, antibody at 1:100 dilution.



Western Blotting

Image 2. WB Image CtBP2 antibody detects CTBP2 protein by Western blot analysis. A. 30 µg A375 whole cell lysate/extract 7.5 % SDS-PAGE CtBP2 antibody , dilution: 1:500