



[Go to Product page](#)

Datasheet for ABIN2855435

anti-PIGA antibody

1 Image

Overview

Quantity:	100 µL
Target:	PIGA
Reactivity:	Human
Host:	Rabbit
Clonality:	Polyclonal
Conjugate:	This PIGA antibody is un-conjugated
Application:	Western Blotting (WB)

Product Details

Immunogen:	Recombinant protein encompassing a sequence within the center region of human PIGA. The exact sequence is proprietary.
Isotype:	IgG
Cross-Reactivity:	Mouse
Characteristics:	Rabbit Polyclonal antibody to PIGA (phosphatidylinositol glycan anchor biosynthesis, class A) PIGA antibody
Purification:	Purified by antigen-affinity chromatography.

Target Details

Target:	PIGA
Alternative Name:	phosphatidylinositol glycan anchor biosynthesis class A (PIGA Products)

Target Details

Background: This gene encodes a protein required for synthesis of N-acetylglucosaminyl phosphatidylinositol (GlcNAc-PI), the first intermediate in the biosynthetic pathway of GPI anchor. The GPI anchor is a glycolipid found on many blood cells and which serves to anchor proteins to the cell surface. Paroxysmal nocturnal hemoglobinuria, an acquired hematologic disorder, has been shown to result from mutations in this gene. Alternate splice variants have been characterized.

Cellular Localization: Endoplasmic reticulum membrane, Single-pass membrane protein

Molecular Weight: 54 kDa

Gene ID: 5277

UniProt: [P37287](#)

Pathways: [Inositol Metabolic Process](#)

Application Details

Application Notes: WB: 1:500-1:3000. Optimal dilutions/concentrations should be determined by the researcher. Not tested in other applications.

Comment: Positive Control: NIH-3T3

Restrictions: For Research Use only

Handling

Format: Liquid

Concentration: 0.18 mg/mL

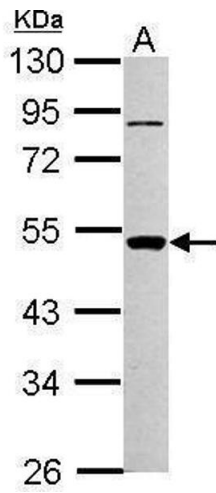
Buffer: 0.1M Tris-Glycine (pH 7), 10 % Glycerol, 1 % BSA, 0.01 % Thimerosal

Preservative: Thimerosal (Merthiolate)

Precaution of Use: This product contains Thimerosal (Merthiolate): a POISONOUS AND HAZARDOUS SUBSTANCE which should be handled by trained staff only.

Storage: 4 °C, -20 °C

Storage Comment: Store as concentrated solution. Centrifuge briefly prior to opening vial. For short-term storage (1-2 weeks), store at 4°C. For long-term storage, aliquot and store at -20°C or below. Avoid multiple freeze-thaw cycles.



Western Blotting

Image 1. WB Image Sample (30 ug of whole cell lysate) A:
NIH-3T3 10% SDS PAGE antibody diluted at 1:1000