



Datasheet for ABIN2855439  
**anti-UBA2 antibody (N-Term)**



[Go to Product page](#)

2 Images

Overview

Quantity:	100 µL
Target:	UBA2
Binding Specificity:	N-Term
Reactivity:	Human
Host:	Rabbit
Clonality:	Polyclonal
Conjugate:	This UBA2 antibody is un-conjugated
Application:	Western Blotting (WB), Immunofluorescence (IF), Immunocytochemistry (ICC)

Product Details

Immunogen:	Recombinant protein encompassing a sequence within the N-terminus region of human UBA2. The exact sequence is proprietary.
Isotype:	IgG
Cross-Reactivity:	Human
Characteristics:	Rabbit Polyclonal antibody to UBA2 (ubiquitin-like modifier activating enzyme 2) UBA2 antibody [N1N3]
Purification:	Purified by antigen-affinity chromatography.

Target Details

Target:	UBA2
---------	------

## Target Details

---

Alternative Name:	ubiquitin like modifier activating enzyme 2 ( <a href="#">UBA2 Products</a> )
Background:	Posttranslational modification of proteins by the addition of the small protein SUMO (see SUMO1, MIM 601912), or sumoylation, regulates protein structure and intracellular localization. SAE1 (MIM 613294) and UBA2 form a heterodimer that functions as a SUMO-activating enzyme for the sumoylation of proteins (Okuma et al., 1999 [PubMed 9920803]).[supplied by OMIM]  Cellular Localization: Nucleus
Molecular Weight:	71 kDa
Gene ID:	10054
UniProt:	<a href="#">Q9UBT2</a>

## Application Details

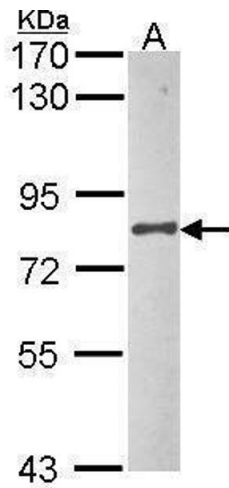
---

Application Notes:	WB: 1:500-1:3000. ICC/IF: 1:100-1:1000. Optimal dilutions/concentrations should be determined by the researcher. Not tested in other applications.
Comment:	Positive Control: HeLa
Restrictions:	For Research Use only

## Handling

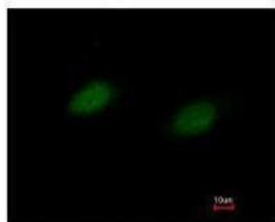
---

Format:	Liquid
Concentration:	0.3 mg/mL
Buffer:	1XPBS ( pH 7), 1 % BSA, 20 % Glycerol, 0.01 % Thimerosal
Preservative:	Thimerosal (Merthiolate)
Precaution of Use:	This product contains Thimerosal (Merthiolate): a POISONOUS AND HAZARDOUS SUBSTANCE which should be handled by trained staff only.
Storage:	4 °C,-20 °C
Storage Comment:	Store as concentrated solution. Centrifuge briefly prior to opening vial. For short-term storage (1-2 weeks), store at 4°C. For long-term storage, aliquot and store at -20°C or below. Avoid multiple freeze-thaw cycles.



### Western Blotting

**Image 1.** WB Image Sample (30 ug of whole cell lysate) A: HeLa 7.5% SDS PAGE UBA2 antibody antibody diluted at 1:1000



Costained with Hoechst 33342



### Immunofluorescence

**Image 2.** ICC/IF Image Immunofluorescence analysis of paraformaldehyde-fixed HeLa, using UBA2, antibody at 1:500 dilution.