

Datasheet for ABIN2855444
anti-GFR antibody (N-Term)[Go to Product page](#)

1 Image

Overview

Quantity:	100 µL
Target:	GFR (RAPGEF5)
Binding Specificity:	N-Term
Reactivity:	Human
Host:	Rabbit
Clonality:	Polyclonal
Conjugate:	This GFR antibody is un-conjugated
Application:	Western Blotting (WB)

Product Details

Immunogen:	Recombinant protein encompassing a sequence within the N-terminus region of human RAPGEF5. The exact sequence is proprietary.
Isotype:	IgG
Cross-Reactivity:	Human
Characteristics:	Rabbit polyclonal antibody to RAPGEF5 (Rap guanine nucleotide exchange factor (GEF) 5) RAPGEF5 antibody
Purification:	Purified by antigen-affinity chromatography.

Target Details

Target:	GFR (RAPGEF5)
---------	---------------

Target Details

Alternative Name:	Rap guanine nucleotide exchange factor 5 (RAPGEF5 Products)
Background:	<p>Members of the RAS (see HRAS, MIM 190020) subfamily of GTPases function in signal transduction as GTP/GDP-regulated switches that cycle between inactive GDP- and active GTP-bound states. Guanine nucleotide exchange factors (GEFs), such as RAPGEF5, serve as RAS activators by promoting acquisition of GTP to maintain the active GTP-bound state and are the key link between cell surface receptors and RAS activation (Rebhun et al., 2000 [PubMed 10934204]).[supplied by OMIM]</p> <p>Cellular Localization: Nucleus</p>
Molecular Weight:	68 kDa
Gene ID:	9771
UniProt:	Q92565
Pathways:	RTK Signaling , Neurotrophin Signaling Pathway , Hepatitis C

Application Details

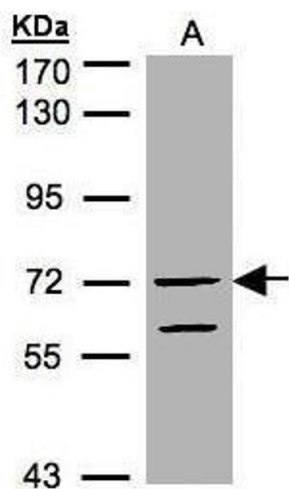
Application Notes:	WB: 1:500-1:3000. Optimal dilutions/concentrations should be determined by the researcher. Not tested in other applications.
Comment:	Positive Control: HeLaS3
Restrictions:	For Research Use only

Handling

Format:	Liquid
Concentration:	0.74 mg/mL
Buffer:	0.1M Tris-Glycine (pH 7), 10 % Glycerol, 0.01 % Thimerosal
Preservative:	Thimerosal (Merthiolate)
Precaution of Use:	This product contains Thimerosal (Merthiolate): a POISONOUS AND HAZARDOUS SUBSTANCE which should be handled by trained staff only.
Storage:	4 °C, -20 °C
Storage Comment:	Store as concentrated solution. Centrifuge briefly prior to opening vial. For short-term storage (1-2 weeks), store at 4°C. For long-term storage, aliquot and store at -20°C or below. Avoid

multiple freeze-thaw cycles.

Validation report #103867 for Immunohistochemistry (IHC)



Western Blotting

Image 1. WB Image Sample(30 µg of whole cell lysate)
A:HeLa S3, 7.5% SDS PAGE antibody diluted at 1:1000