

Datasheet for ABIN2855446
anti-PRPS1 antibody (N-Term)

6 Images

[Go to Product page](#)

Overview

Quantity:	100 µL
Target:	PRPS1
Binding Specificity:	N-Term
Reactivity:	Human
Host:	Rabbit
Clonality:	Polyclonal
Conjugate:	This PRPS1 antibody is un-conjugated
Application:	Western Blotting (WB), Immunohistochemistry (Paraffin-embedded Sections) (IHC (p))

Product Details

Immunogen:	Recombinant protein encompassing a sequence within the N-terminus region of human PRPS1. The exact sequence is proprietary.
Isotype:	IgG
Cross-Reactivity:	Human, Mouse, Rat
Characteristics:	Rabbit Polyclonal antibody to PRPS1 (phosphoribosyl pyrophosphate synthetase 1) PRPS1 antibody
Purification:	Purified by antigen-affinity chromatography.

Target Details

Target:	PRPS1
---------	-------

Target Details

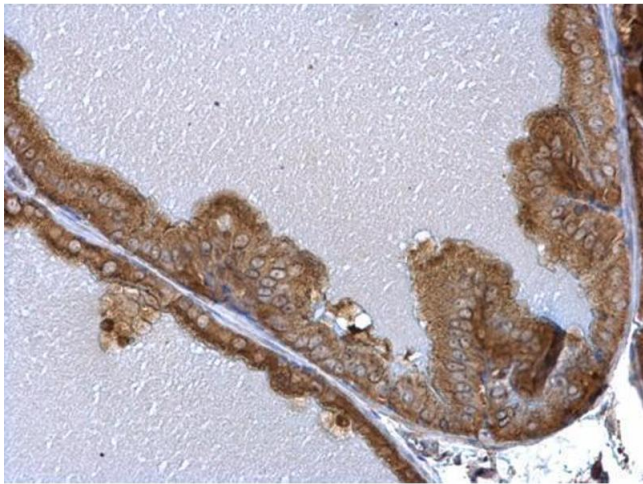
Alternative Name:	phosphoribosyl pyrophosphate synthetase 1 (PRPS1 Products)
Background:	This gene encodes an enzyme that catalyzes the phosphoribosylation of ribose 5-phosphate to 5-phosphoribosyl-1-pyrophosphate, which is necessary for purine metabolism and nucleotide biosynthesis. Defects in this gene are a cause of phosphoribosylpyrophosphate synthetase superactivity, Charcot-Marie-Tooth disease X-linked recessive type 5 and Arts Syndrome.
Molecular Weight:	35 kDa
Gene ID:	5631
UniProt:	P60891
Pathways:	Ribonucleoside Biosynthetic Process

Application Details

Application Notes:	WB: 1:1000-1:10000. IHC-P: 1:100-1:1000. Optimal dilutions/concentrations should be determined by the researcher. Not tested in other applications.
Comment:	Positive Control: Mouse kidney , Rat liver , 293T
Restrictions:	For Research Use only

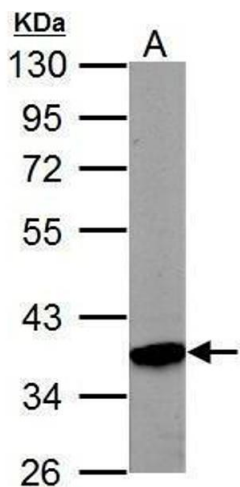
Handling

Format:	Liquid
Concentration:	0.58 mg/mL
Buffer:	0.1M Tris-Glycine (pH 7), 20 % Glycerol, 0.01 % Thimerosal
Preservative:	Thimerosal (Merthiolate)
Precaution of Use:	This product contains Thimerosal (Merthiolate): a POISONOUS AND HAZARDOUS SUBSTANCE which should be handled by trained staff only.
Storage:	4 °C,-20 °C
Storage Comment:	Store as concentrated solution. Centrifuge briefly prior to opening vial. For short-term storage (1-2 weeks), store at 4°C. For long-term storage, aliquot and store at -20°C or below. Avoid multiple freeze-thaw cycles.



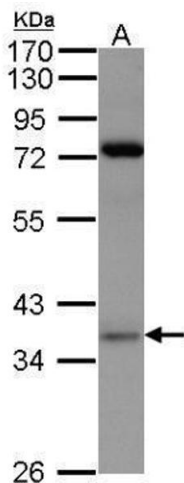
Immunohistochemistry

Image 1. IHC-P Image PRPS1 antibody detects PRPS1 protein at cytosol on mouse prostate by immunohistochemical analysis. Sample: Paraffin-embedded mouse prostate. PRPS1 antibody , dilution: 1:500.



Western Blotting

Image 2. WB Image Sample (50 ug of whole cell lysate) A: mouse kidney 10% SDS PAGE antibody diluted at 1:3000



Western Blotting

Image 3. WB Image Sample(30 µg of whole cell lysate) A:293T 7.5% SDS PAGE antibody diluted at 1:1500

Please check the [product details page](#) for more images. Overall 6 images are available for ABIN2855446.