

Datasheet for ABIN2855447
anti-TOP2B antibody (C-Term)

3 Images

[Go to Product page](#)

Overview

Quantity:	100 µL
Target:	TOP2B
Binding Specificity:	C-Term
Reactivity:	Human
Host:	Rabbit
Clonality:	Polyclonal
Conjugate:	This TOP2B antibody is un-conjugated
Application:	Western Blotting (WB), Immunoprecipitation (IP), Immunofluorescence (IF), Immunohistochemistry (Paraffin-embedded Sections) (IHC (p)), Immunocytochemistry (ICC)

Product Details

Immunogen:	Recombinant protein encompassing a sequence within the C-terminus region of human Topoisomerase II beta. The exact sequence is proprietary.
Isotype:	IgG
Cross-Reactivity:	Human, Mouse, Rat
Characteristics:	Rabbit Polyclonal antibody to Topoisomerase II beta (topoisomerase (DNA) II beta 180 kDa) Topoisomerase II beta antibody [C3], C-term
Purification:	Purified by antigen-affinity chromatography.

Target Details

Target:	TOP2B
---------	-------

Target Details

Alternative Name:	DNA topoisomerase II beta (TOP2B Products)
Background:	<p>This gene encodes a DNA topoisomerase, an enzyme that controls and alters the topologic states of DNA during transcription. This nuclear enzyme is involved in processes such as chromosome condensation, chromatid separation, and the relief of torsional stress that occurs during DNA transcription and replication. It catalyzes the transient breaking and rejoining of two strands of duplex DNA which allows the strands to pass through one another, thus altering the topology of DNA. Two forms of this enzyme exist as likely products of a gene duplication event. The gene encoding this form, beta, is localized to chromosome 3 and the alpha form is localized to chromosome 17. The gene encoding this enzyme functions as the target for several anticancer agents and a variety of mutations in this gene have been associated with the development of drug resistance. Reduced activity of this enzyme may also play a role in ataxia-telangiectasia. Alternative splicing of this gene results in two transcript variants, however, the second variant has not yet been fully described.</p> <p>Cellular Localization: Cytoplasm , Nucleus , nucleolus</p>
Molecular Weight:	183 kDa
Gene ID:	7155
UniProt:	Q02880

Application Details

Application Notes:	WB: 1:500-1:3000. ICC/IF: 1:100-1:1000. IHC-P: 1:100-1:1000. IP: 1:100-1:500. Optimal dilutions/concentrations should be determined by the researcher. Not tested in other applications.
Comment:	Positive Control: Jurkat , K562 , THP-1
Restrictions:	For Research Use only

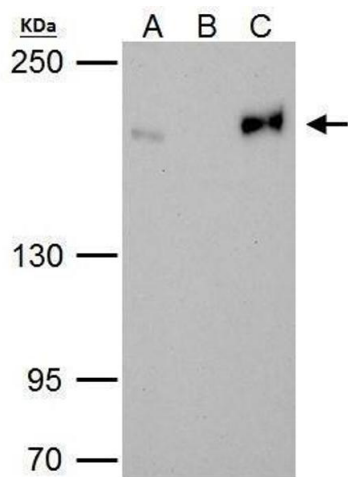
Handling

Format:	Liquid
Concentration:	0.48 mg/mL
Buffer:	1XPBS (pH 7), 1 % BSA, 20 % Glycerol, 0.025 % ProClin 300
Preservative:	ProClin

Handling

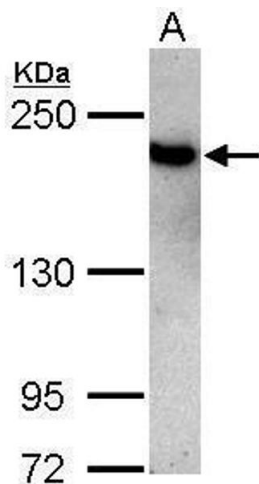
Precaution of Use:	This product contains ProClin: a POISONOUS AND HAZARDOUS SUBSTANCE which should be handled by trained staff only.
Storage:	4 °C,-20 °C
Storage Comment:	Store as concentrated solution. Centrifuge briefly prior to opening vial. For short-term storage (1-2 weeks), store at 4°C. For long-term storage, aliquot and store at -20°C or below. Avoid multiple freeze-thaw cycles.

Validation report #103867 for Immunohistochemistry (IHC)



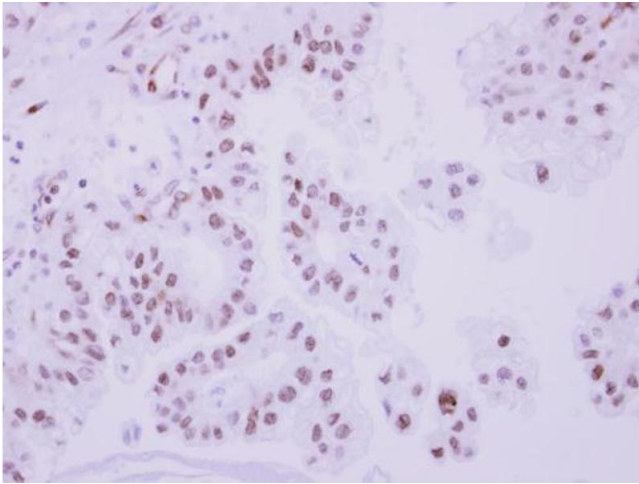
Immunoprecipitation

Image 1. IP Image Topoisomerase II beta antibody immunoprecipitates Topoisomerase II beta protein in IP experiments. IP Sample: HeLa whole cell lysate/extract A. 40 µg HeLa whole cell lysate/extract B. Control with 2 µg of preimmune rabbit IgG C. Immunoprecipitation of Topoisomerase II beta protein by 2 µg of Topoisomerase II beta antibody , 5% SDS-PAGE The immunoprecipitated Topoisomerase II beta protein was detected by Topoisomerase II beta antibody , diluted at 1:1000. EasyBlot anti-rabbit IgG was used as a secondary reagent.



Western Blotting

Image 2. WB Image Sample (30 ug of whole cell lysate) A: Jurkat 5% SDS PAGE antibody diluted at 1:3000



Immunohistochemistry

Image 3. IHC-P Image Immunohistochemical analysis of paraffin-embedded human ovarian cancer, using Topoisomerase II beta, antibody at 1:250 dilution.