

Datasheet for ABIN2855451

anti-PPME1 antibody**3** Images[Go to Product page](#)

Overview

Quantity:	100 µL
Target:	PPME1
Reactivity:	Human
Host:	Rabbit
Clonality:	Polyclonal
Conjugate:	This PPME1 antibody is un-conjugated
Application:	Western Blotting (WB), Immunohistochemistry (Paraffin-embedded Sections) (IHC (p))

Product Details

Immunogen:	Recombinant protein encompassing a sequence within the center region of human PPME1. The exact sequence is proprietary.
Isotype:	IgG
Cross-Reactivity:	Human, Mouse
Characteristics:	Rabbit Polyclonal antibody to PPME1 (protein phosphatase methylesterase 1) PPME1 antibody
Purification:	Purified by antigen-affinity chromatography.

Target Details

Target:	PPME1
Alternative Name:	protein phosphatase methylesterase 1 (PPME1 Products)

Target Details

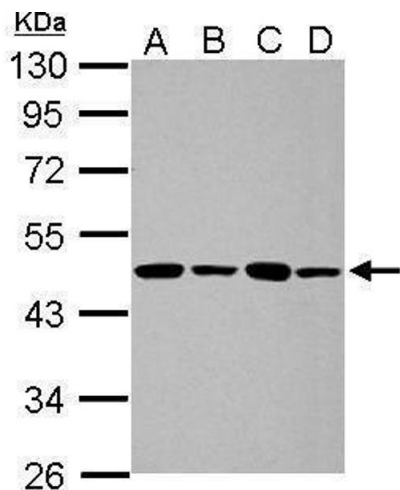
Background:	Protein phosphatase methylesterase-1 catalyzes the demethylation of the protein phosphatase-2A catalytic subunit (PPP2CA, MIM 176915) (Ogris et al., 1999 [PubMed 10318862]).[supplied by OMIM]
Molecular Weight:	42 kDa
Gene ID:	51400
UniProt:	Q9Y570
Pathways:	Methionine Biosynthetic Process

Application Details

Application Notes:	WB: 1:500-1:3000. IHC-P: 1:100-1:1000. Optimal dilutions/concentrations should be determined by the researcher. Not tested in other applications.
Comment:	Positive Control: 293T , A431 , HeLa , HepG2 , NIH-3T3 , JC
Restrictions:	For Research Use only

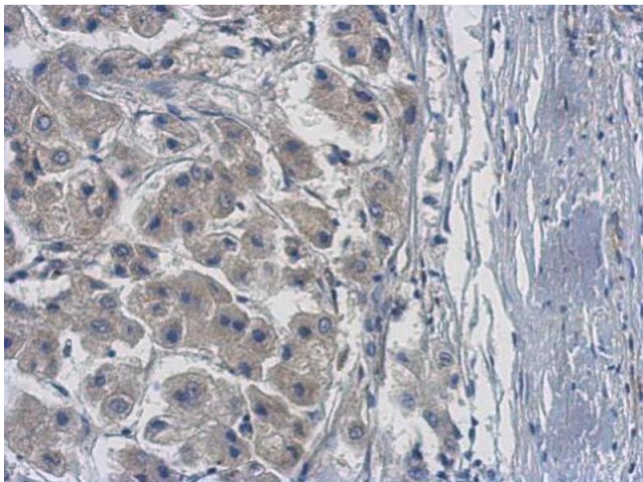
Handling

Format:	Liquid
Concentration:	1 mg/mL
Buffer:	1XPBS (pH 7), 20 % Glycerol, 0.01 % Thimerosal
Preservative:	Thimerosal (Merthiolate)
Precaution of Use:	This product contains Thimerosal (Merthiolate): a POISONOUS AND HAZARDOUS SUBSTANCE which should be handled by trained staff only.
Storage:	4 °C,-20 °C
Storage Comment:	Store as concentrated solution. Centrifuge briefly prior to opening vial. For short-term storage (1-2 weeks), store at 4°C. For long-term storage, aliquot and store at -20°C or below. Avoid multiple freeze-thaw cycles.



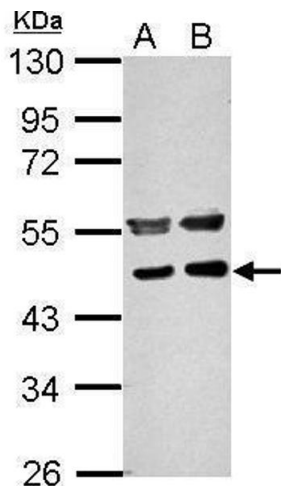
Western Blotting

Image 1. WB Image Sample (30 ug of whole cell lysate) A: 293T B: A431 C: HeLa D: HepG2 10% SDS PAGE antibody diluted at 1:1000



Immunohistochemistry

Image 2. IHC-P Image Immunohistochemical analysis of paraffin-embedded human hepatoma, using PME-1, antibody at 1:500 dilution.



Western Blotting

Image 3. WB Image Sample (30 ug of whole cell lysate) A: NIH-3T3 B: JC 10% SDS PAGE antibody diluted at 1:1000