

Datasheet for ABIN2855452
anti-TROVE2 antibody (Center)

3 Images

[Go to Product page](#)

Overview

Quantity:	100 µL
Target:	TROVE2
Binding Specificity:	Center
Reactivity:	Human, Mouse
Host:	Rabbit
Clonality:	Polyclonal
Conjugate:	This TROVE2 antibody is un-conjugated
Application:	Western Blotting (WB), Immunohistochemistry (Paraffin-embedded Sections) (IHC (p))

Product Details

Immunogen:	Recombinant protein encompassing a sequence within the center region of human TROVE2. The exact sequence is proprietary.
Isotype:	IgG
Cross-Reactivity:	Rat (Rattus), Cow (Bovine)
Cross-Reactivity (Details):	Rat (88 %), Bovine (95 %)
Characteristics:	Rabbit Polyclonal antibody to TROVE2 (TROVE domain family, member 2) TROVE2 antibody [N2C3]
Purification:	Purified by antigen-affinity chromatography.

Target Details

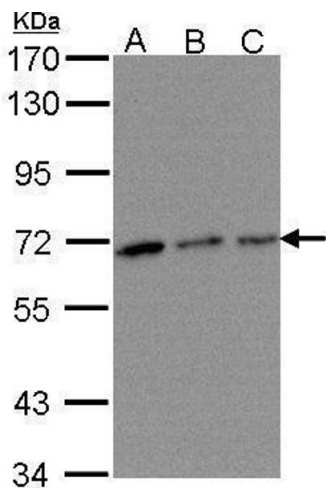
Target:	TROVE2
Alternative Name:	TROVE2 (TROVE2 Products)
Background:	RNA-binding protein that binds to several small cytoplasmic RNA molecules known as Y RNAs. May stabilize these RNAs from degradation. Cellular Localization: Cytoplasm
Molecular Weight:	61 kDa
Gene ID:	6738

Application Details

Application Notes:	Suggested dilution Reference IHC (Formalin-fixed paraffin-embedded sections) 1:100-1:1000* Western blot 1:500-1:3000* Not tested in other applications. *Optimal dilutions/concentrations should be determined by the researcher.Suggested dilutionReferenceIHC (Formalin-fixed paraffin-embedded sections)1:100-1:1000* Western blot1:500-1:3000*
Comment:	Positive Control: 293T , A431 , H1299 , HepG2 , Molt-4 , Raji , mouse heart
Restrictions:	For Research Use only

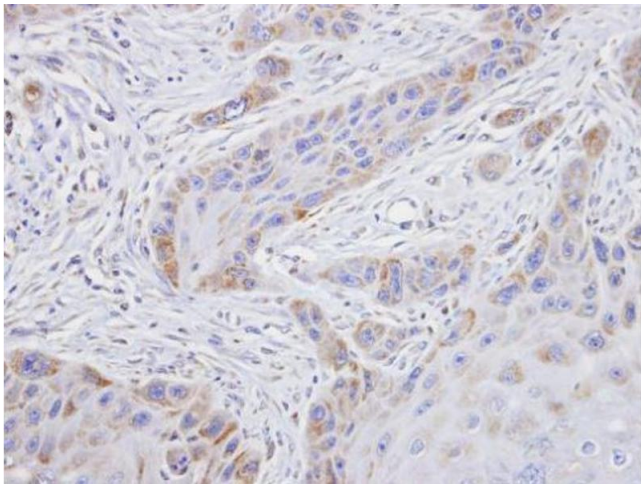
Handling

Format:	Liquid
Concentration:	0.23 mg/mL
Buffer:	0.1M Tris, 0.1M Glycine, 10 % Glycerol (pH 7). 0.01 % Thimerosal was added as a preservative.
Preservative:	Thimerosal (Merthiolate)
Precaution of Use:	This product contains Thimerosal (Merthiolate): a POISONOUS AND HAZARDOUS SUBSTANCE which should be handled by trained staff only.
Storage:	-20 °C
Storage Comment:	Keep as concentrated solution. Aliquot and store at -20°C or below. Avoid multiple freeze-thaw cycles.



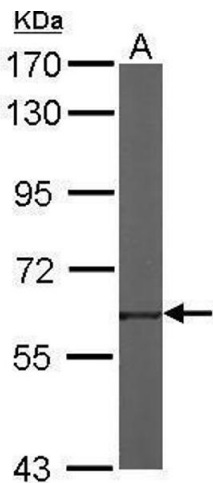
Western Blotting

Image 1. WB Image Sample(30 µg of whole cell lysate)
A:293T B:A431, C:H1299 7.5% SDS PAGE antibody diluted at 1:500



Immunohistochemistry

Image 2. IHC-P Image Immunohistochemical analysis of paraffin-embedded SCC15 xenograft, using TROVE2, antibody at 1:100 dilution.



Western Blotting

Image 3. WB Image Sample (50 ug of whole cell lysate) A:
mouse heart 7.5% SDS PAGE antibody diluted at 1:1000