

Datasheet for ABIN2855455
anti-MCCC2 antibody (Center)[Go to Product page](#)

4 Images

Overview

Quantity:	100 µL
Target:	MCCC2
Binding Specificity:	Center
Reactivity:	Human, Mouse
Host:	Rabbit
Clonality:	Polyclonal
Conjugate:	This MCCC2 antibody is un-conjugated
Application:	Western Blotting (WB), Immunohistochemistry (Paraffin-embedded Sections) (IHC (p))

Product Details

Immunogen:	Recombinant protein encompassing a sequence within the center region of human MCCC2. The exact sequence is proprietary.
Isotype:	IgG
Cross-Reactivity:	Rat (Rattus), Xenopus laevis, Zebrafish (Danio rerio), Xenopus tropicalis
Cross-Reactivity (Details):	Rat (88 %), Xenopus laevis (84 %), Zebrafish (84 %), Xenopus tropicalis (85 %)
Characteristics:	Rabbit Polyclonal antibody to MCCC2 (methylcrotonoyl-Coenzyme A carboxylase 2 (beta)) MCCC2 antibody [N1C1]
Purification:	Purified by antigen-affinity chromatography.

Target Details

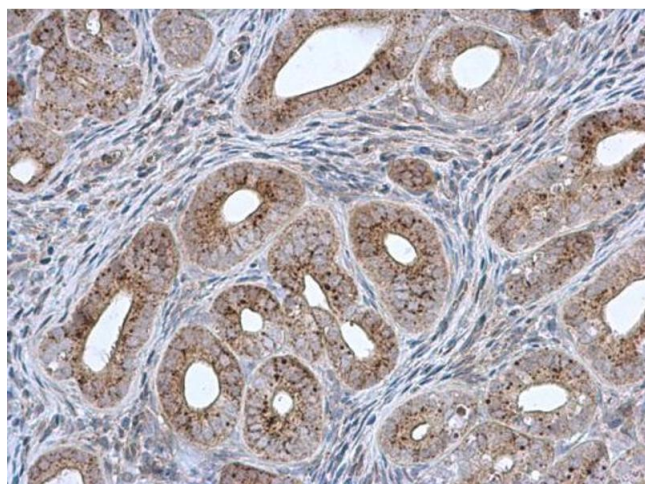
Target:	MCCC2
Alternative Name:	MCCC2 (MCCC2 Products)
Background:	<p>This gene encodes the small subunit of 3-methylcrotonyl-CoA carboxylase. This enzyme functions as a heterodimer and catalyzes the carboxylation of 3-methylcrotonyl-CoA to form 3-methylglutaconyl-CoA. Mutations in this gene are associated with 3-Methylcrotonylglycinuria, an autosomal recessive disorder of leucine catabolism.</p> <p>Cellular Localization: Mitochondrion matrix</p>
Molecular Weight:	61 kDa
Gene ID:	64087

Application Details

Application Notes:	<p>Suggested dilution Reference IHC (Formalin-fixed paraffin-embedded sections) 1:100-1:1000* Western blot 1:500-1:3000* Not tested in other applications. *Optimal dilutions/concentrations should be determined by the researcher. Suggested dilution Reference IHC (Formalin-fixed paraffin-embedded sections) 1:100-1:1000* Western blot 1:500-1:3000*</p>
Comment:	Positive Control: 293T , A431 , H1299 , HepG2 , mouse liver
Restrictions:	For Research Use only

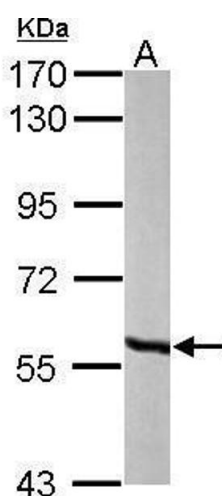
Handling

Format:	Liquid
Concentration:	1 mg/mL
Buffer:	0.1M Tris, 0.1M Glycine, 10 % Glycerol (pH 7). 0.01 % Thimerosal was added as a preservative.
Preservative:	Thimerosal (Merthiolate)
Precaution of Use:	This product contains Thimerosal (Merthiolate): a POISONOUS AND HAZARDOUS SUBSTANCE which should be handled by trained staff only.
Storage:	-20 °C
Storage Comment:	Keep as concentrated solution. Aliquot and store at -20°C or below. Avoid multiple freeze-thaw cycles.



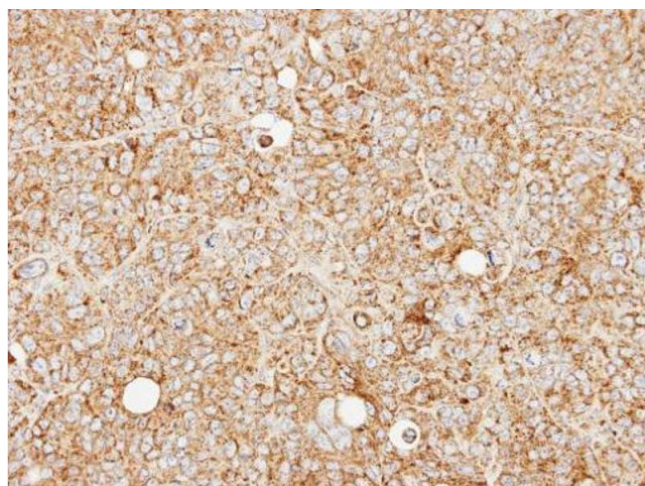
Immunohistochemistry

Image 1. IHC-P Image MCCC2 antibody [N1C1] detects MCCC2 protein at mitochondria in mouse cervix by immunohistochemical analysis. Sample: Paraffin-embedded mouse cervix. MCCC2 antibody [N1C1], diluted at 1:500.



Western Blotting

Image 2. WB Image Sample (50 ug of whole cell lysate) A: mouse liver 7.5% SDS PAGE antibody diluted at 1:1000



Immunohistochemistry

Image 3. IHC-P Image Immunohistochemical analysis of paraffin-embedded SW480 xenograft, using MCCC2, antibody at 1:100 dilution.

Please check the [product details page](#) for more images. Overall 4 images are available for ABIN2855455.