



Datasheet for ABIN2855456  
**anti-Integrin beta 5 antibody (Center)**



[Go to Product page](#)

1 Image

Overview

Quantity:	100 µL
Target:	Integrin beta 5 (ITGB5)
Binding Specificity:	Center
Reactivity:	Human
Host:	Rabbit
Clonality:	Polyclonal
Conjugate:	This Integrin beta 5 antibody is un-conjugated
Application:	Western Blotting (WB)

Product Details

Immunogen:	Recombinant protein encompassing a sequence within the center region of human Integrin beta 5. The exact sequence is proprietary.
Isotype:	IgG
Cross-Reactivity:	Mouse (Murine), Chicken, Pig (Porcine), Rat (Rattus), Xenopus laevis, Zebrafish (Danio rerio), Cow (Bovine)
Cross-Reactivity (Details):	Mouse (98 %), Chicken (89 %), Pig (98 %), Rat (98 %), Xenopus laevis (80 %), Zebrafish (86 %), Bovine (98 %)
Characteristics:	Rabbit Polyclonal antibody to Integrin beta 5 (integrin, beta 5) Integrin beta 5 antibody [N1C1]
Purification:	Purified by antigen-affinity chromatography.

## Target Details

---

Target:	Integrin beta 5 (ITGB5)
Alternative Name:	Integrin beta 5 ( <a href="#">ITGB5 Products</a> )
Background:	Integrin alpha-V/beta-5 is a receptor for fibronectin. It recognizes the sequence R-G-D in its ligand.
Molecular Weight:	88 kDa
Gene ID:	3693
Pathways:	<a href="#">Integrin Complex</a>

## Application Details

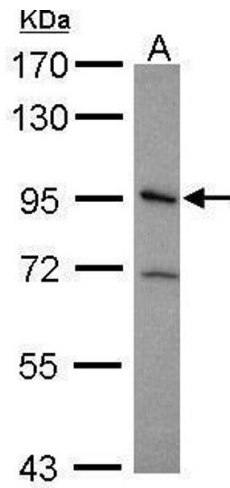
---

Application Notes:	Suggested dilution Reference Western blot 1:500-1:3000* Not tested in other applications. *Optimal dilutions/concentrations should be determined by the researcher.Suggested dilutionReferenceWestern blot1:500-1:3000*
Comment:	Positive Control: HeLa , HepG2 , HCT116
Restrictions:	For Research Use only

## Handling

---

Format:	Liquid
Concentration:	0.19 mg/mL
Buffer:	0.1M Tris, 0.1M Glycine, 10 % Glycerol ( pH 7). 0.01 % Thimerosal was added as a preservative.
Preservative:	Thimerosal (Merthiolate)
Precaution of Use:	This product contains Thimerosal (Merthiolate): a POISONOUS AND HAZARDOUS SUBSTANCE which should be handled by trained staff only.
Storage:	-20 °C
Storage Comment:	Keep as concentrated solution. Aliquot and store at -20°C or below. Avoid multiple freeze-thaw cycles.



### Western Blotting

**Image 1.** WB Image Sample (30 ug of whole cell lysate) A:  
HeLa 7.5% SDS PAGE antibody diluted at 1:500