

Datasheet for ABIN2855459

anti-P4HA2 antibody**1** Image[Go to Product page](#)

Overview

Quantity:	100 µL
Target:	P4HA2
Reactivity:	Human
Host:	Rabbit
Clonality:	Polyclonal
Conjugate:	This P4HA2 antibody is un-conjugated
Application:	Western Blotting (WB)

Product Details

Immunogen:	Recombinant protein encompassing a sequence within the center region of human P4HA2. The exact sequence is proprietary.
Isotype:	IgG
Cross-Reactivity:	Human
Characteristics:	Rabbit polyclonal antibody to P4HA2 (procollagen-proline, 2-oxoglutarate 4-dioxygenase (proline 4-hydroxylase), alpha polypeptide II) P4HA2 antibody [N1C3]
Purification:	Affinity purified by Protein A.

Target Details

Target:	P4HA2
Alternative Name:	prolyl 4-hydroxylase subunit alpha 2 (P4HA2 Products)

Target Details

Background: This gene encodes a component of prolyl 4-hydroxylase, a key enzyme in collagen synthesis composed of two identical alpha subunits and two beta subunits. The encoded protein is one of several different types of alpha subunits and provides the major part of the catalytic site of the active enzyme. In collagen and related proteins, prolyl 4-hydroxylase catalyzes the formation of 4-hydroxyproline that is essential to the proper three-dimensional folding of newly synthesized procollagen chains. Alternatively spliced transcript variants encoding different isoforms have been described.

Cellular Localization: Endoplasmic reticulum lumen

Molecular Weight: 61 kDa

Gene ID: 8974

UniProt: [O15460](#)

Application Details

Application Notes: WB: 1:500-1:3000. Optimal dilutions/concentrations should be determined by the researcher.
Not tested in other applications.

Comment: Positive Control: H1299

Restrictions: For Research Use only

Handling

Format: Liquid

Concentration: 1.82 mg/mL

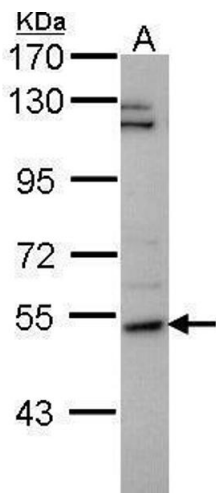
Buffer: 1XPBS (pH 7), 40 % Glycerol, 0.01 % Thimerosal

Preservative: Thimerosal (Merthiolate)

Precaution of Use: This product contains Thimerosal (Merthiolate): a POISONOUS AND HAZARDOUS SUBSTANCE which should be handled by trained staff only.

Storage: 4 °C,-20 °C

Storage Comment: Store as concentrated solution. Centrifuge briefly prior to opening vial. For short-term storage (1-2 weeks), store at 4°C. For long-term storage, aliquot and store at -20°C or below. Avoid multiple freeze-thaw cycles.



Western Blotting

Image 1. WB Image Sample (30 ug of whole cell lysate) A:
H1299 7.5% SDS PAGE antibody diluted at 1:1000