

Datasheet for ABIN2855460  
**anti-NFE2 antibody (Center)**

## 3 Images

[Go to Product page](#)

## Overview

Quantity:	100 µL
Target:	NFE2
Binding Specificity:	Center
Reactivity:	Human, Mouse
Host:	Rabbit
Clonality:	Polyclonal
Conjugate:	This NFE2 antibody is un-conjugated
Application:	Western Blotting (WB), Immunofluorescence (IF), Immunoprecipitation (IP), Immunocytochemistry (ICC), ChIP DNA-Sequencing (ChIP-seq)

## Product Details

Immunogen:	Recombinant protein encompassing a sequence within the center region of human NF-E2. The exact sequence is proprietary.
Isotype:	IgG
Cross-Reactivity:	Monkey, Pig (Porcine)
Cross-Reactivity (Details):	Monkey (97 %), Pig (91 %)
Characteristics:	Rabbit Polyclonal antibody to NF-E2 (nuclear factor (erythroid-derived 2), 45 kDa) NF-E2 antibody [N1C3]
Purification:	Purified by antigen-affinity chromatography.

## Target Details

Target:	NFE2
Alternative Name:	NF-E2 ( <a href="#">NFE2 Products</a> )
Background:	<p>Component of the NF-E2 complex essential for regulating erythroid and megakaryocytic maturation and differentiation. Binds to the hypersensitive site 2 (HS2) of the beta-globin control region (LCR). This subunit (NFE2) recognizes the TCAT/C sequence of the AP-1-like core palindrome present in a number of erythroid and megakaryocytic gene promoters. Requires MAFK or other small MAF proteins for binding to the NF-E2 motif. May play a role in all aspects of hemoglobin production from globin and heme synthesis to procurement of iron.</p> <p>Cellular Localization: Nucleus</p>
Molecular Weight:	41 kDa
Gene ID:	4778

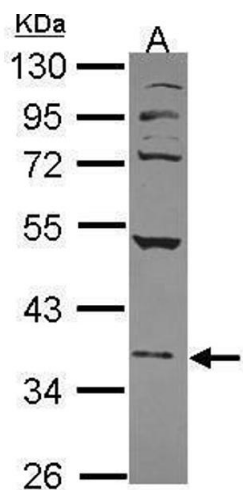
## Application Details

Application Notes:	<p>Suggested dilution Reference ICC/IF 1:100-1:1000* Immunoprecipitation Assay-dependent dilution Western blot 1:500-1:3000* ChIP-sequencing Assay-dependent dilution Not tested in other applications. *Optimal dilutions/concentrations should be determined by the researcher.Suggested dilutionReferenceICC/IF1:100-1:1000* ImmunoprecipitationAssay-dependent dilution Western blot1:500-1:3000* ChIP-sequencingAssay-dependent dilution</p>
Comment:	Positive Control: 293T , mouse spleen
Restrictions:	For Research Use only

## Handling

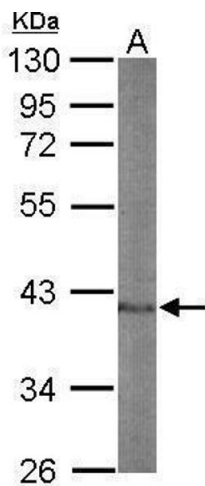
Format:	Liquid
Concentration:	1.03 mg/mL
Buffer:	0.1M Tris, 0.1M Glycine, 10 % Glycerol ( pH 7). 0.01 % Thimerosal was added as a preservative.
Preservative:	Thimerosal (Merthiolate)
Precaution of Use:	This product contains Thimerosal (Merthiolate): a POISONOUS AND HAZARDOUS SUBSTANCE which should be handled by trained staff only.
Storage:	-20 °C
Storage Comment:	Keep as concentrated solution. Aliquot and store at -20°C or below. Avoid multiple freeze-thaw

cycles.



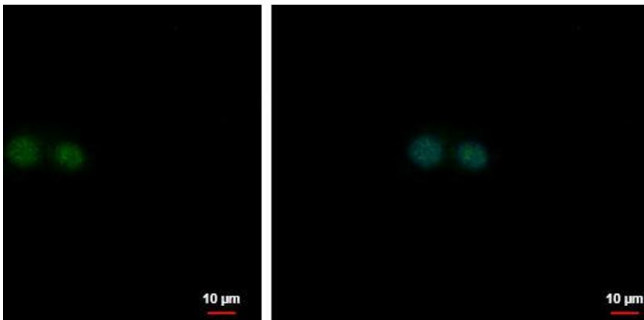
Western Blotting

**Image 1.** WB Image Sample (30 ug of whole cell lysate) A:  
293T 10% SDS PAGE antibody diluted at 1:1000



Western Blotting

**Image 2.** WB Image Sample (50 ug of whole cell lysate) A:  
mouse spleen 10% SDS PAGE antibody diluted at 1:1000



Immunofluorescence

**Image 3.** ICC/IF Image NF-E2 antibody [N1C3] detects NF-E2 protein at nucleus by immunofluorescent analysis. Sample: HepG2 cells were fixed in 4% paraformaldehyde at RT for 15 min. Green: NF-E2 protein stained by NF-E2 antibody [N1C3] , diluted at 1:500. Blue: Hoechst 33342 staining. Scale bar = 10 μm.