



Datasheet for ABIN2855464  
**anti-MAP3K8 antibody**



[Go to Product page](#)

4 Images

Overview

Quantity:	100 µL
Target:	MAP3K8
Reactivity:	Human
Host:	Rabbit
Clonality:	Polyclonal
Conjugate:	This MAP3K8 antibody is un-conjugated
Application:	Western Blotting (WB), Immunohistochemistry (Paraffin-embedded Sections) (IHC (p)), Immunofluorescence (IF), Immunocytochemistry (ICC)

Product Details

Immunogen:	Recombinant protein encompassing a sequence within the center region of human MAP3K8. The exact sequence is proprietary.
Isotype:	IgG
Cross-Reactivity:	Human, Mouse
Characteristics:	Rabbit Polyclonal antibody to MAP3K8 (mitogen-activated protein kinase kinase kinase 8) MAP3K8 antibody [N3C3]
Purification:	Purified by antigen-affinity chromatography.

Target Details

Target:	MAP3K8
Alternative Name:	mitogen-activated protein kinase kinase kinase 8 ( <a href="#">MAP3K8 Products</a> )

## Target Details

---

**Background:** This gene was identified by its oncogenic transforming activity in cells. The encoded protein is a member of the serine/threonine protein kinase family. This kinase can activate both the MAP kinase and JNK kinase pathways. This kinase was shown to activate I $\kappa$ B kinases, and thus induce the nuclear production of NF- $\kappa$ B. This kinase was also found to promote the production of TNF- $\alpha$  and IL-2 during T lymphocyte activation. Studies of a similar gene in rat suggested the direct involvement of this kinase in the proteolysis of NF- $\kappa$ B1,p105 (NFKB1). This gene may also utilize a downstream in-frame translation start codon, and thus produce an isoform containing a shorter N-terminus. The shorter isoform has been shown to display weaker transforming activity.

---

**Molecular Weight:** 53 kDa

---

**Gene ID:** 1326

---

**UniProt:** [P41279](#)

---

**Pathways:** [PI3K-Akt Signaling](#), [TCR Signaling](#)

## Application Details

---

**Application Notes:** WB: 1:5000-1:50000. ICC/IF: 1:100-1:1000. IHC-P: 1:100-1:1000. Optimal dilutions/concentrations should be determined by the researcher. Not tested in other applications.

---

**Comment:** Positive Control: Lovo  
Validation: Orthogonal, Overexpression

---

**Restrictions:** For Research Use only

## Handling

---

**Format:** Liquid

---

**Concentration:** 0.33 mg/mL

---

**Buffer:** 1XPBS, 1 % BSA, 20 % Glycerol ( pH 7), 0.025 % ProClin 300

---

**Preservative:** ProClin

---

**Precaution of Use:** This product contains ProClin: a POISONOUS AND HAZARDOUS SUBSTANCE which should be handled by trained staff only.

---

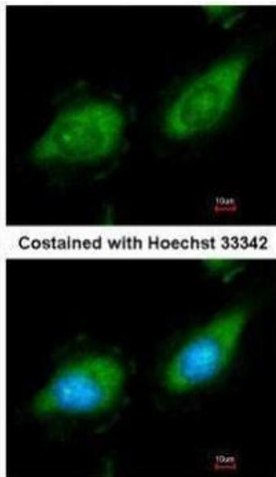
**Storage:** 4 °C,-20 °C

---

## Handling

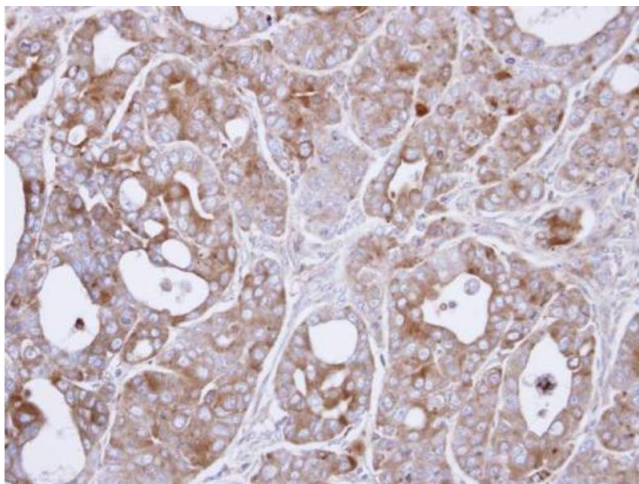
Storage Comment: Store as concentrated solution. Centrifuge briefly prior to opening vial. For short-term storage (1-2 weeks), store at 4°C. For long-term storage, aliquot and store at -20°C or below. Avoid multiple freeze-thaw cycles.

## Images



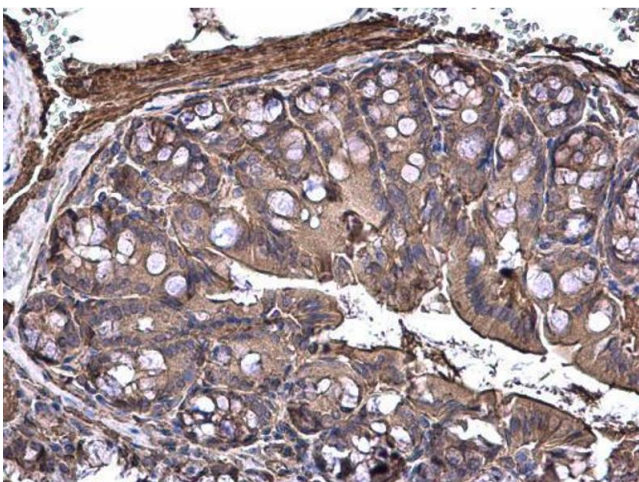
### Immunofluorescence

**Image 1.** ICC/IF Image Immunofluorescence analysis of methanol-fixed HeLa, using MAP3K8, antibody at 1:200 dilution.



### Immunohistochemistry

**Image 2.** IHC-P Image Immunohistochemical analysis of paraffin-embedded NCIN87 xenograft, using MEKK8(COT), antibody at 1:500 dilution.



### Immunohistochemistry

**Image 3.** IHC-P Image MAP3K8 antibody [N3C3] detects MAP3K8 protein at cytoplasm on mouse colon by immunohistochemical analysis. Sample: Paraffin-embedded mouse colon. MAP3K8 antibody [N3C3], diluted at 1:500.

Please check the [product details page](#) for more images. Overall 4 images are available for ABIN2855464.