



[Go to Product page](#)

Datasheet for ABIN2855468

anti-CYP4F2 antibody (Internal Region)

1 Image

Overview

Quantity:	100 µL
Target:	CYP4F2
Binding Specificity:	Internal Region
Reactivity:	Human, Pig
Host:	Rabbit
Clonality:	Polyclonal
Conjugate:	This CYP4F2 antibody is un-conjugated
Application:	Western Blotting (WB)

Product Details

Immunogen:	Recombinant protein encompassing a sequence within the center region of human Cytochrome P450 4F2. The exact sequence is proprietary.
Isotype:	IgG
Cross-Reactivity:	Cow (Bovine)
Cross-Reactivity (Details):	Bovine (87 %)
Characteristics:	Rabbit Polyclonal antibody to Cytochrome P450 4F2 (cytochrome P450, family 4, subfamily F, polypeptide 2) Cytochrome P450 4F2 antibody [N2C2], Internal
Purification:	Purified by antigen-affinity chromatography.

Target Details

Target:	CYP4F2
Alternative Name:	Cytochrome P450 4F2 (CYP4F2 Products)
Background:	This gene encodes a member of the cytochrome P450 superfamily of enzymes. The cytochrome P450 proteins are monooxygenases which catalyze many reactions involved in drug metabolism and synthesis of cholesterol, steroids and other lipids. This protein localizes to the endoplasmic reticulum. The enzyme starts the process of inactivating and degrading leukotriene B4, a potent mediator of inflammation. This gene is part of a cluster of cytochrome P450 genes on chromosome 19. Another member of this family, CYP4F11, is approximately 16 kb away.
Molecular Weight:	60 kDa
Gene ID:	8529
Pathways:	Monocarboxylic Acid Catabolic Process

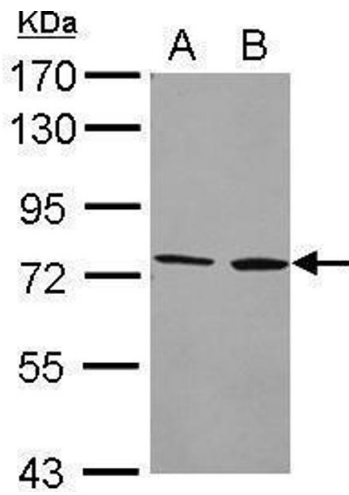
Application Details

Application Notes:	Suggested dilution Reference Western blot 1:500-1:3000* Not tested in other applications. *Optimal dilutions/concentrations should be determined by the researcher.Suggested dilutionReferenceWestern blot1:500-1:3000*
Comment:	Positive Control: HeLa , HeLa membrane
Restrictions:	For Research Use only

Handling

Format:	Liquid
Concentration:	0.279 mg/mL
Buffer:	1XPBS, 10 % Glycerol (pH 7). 0.01 % Thimerosal was added as a preservative.
Preservative:	Thimerosal (Merthiolate)
Precaution of Use:	This product contains Thimerosal (Merthiolate): a POISONOUS AND HAZARDOUS SUBSTANCE which should be handled by trained staff only.
Storage:	-20 °C
Storage Comment:	Keep as concentrated solution. Aliquot and store at -20°C or below. Avoid multiple freeze-thaw

cycles.



Western Blotting

Image 1. WB Image Sample (20 ug) A: HeLa whole cell lysate
B: HeLa cell membrane 7.5% SDS PAGE antibody diluted at
1:1000